

RESEARCH ARTICLE

Open Access



# A TIGIT-based chimeric co-stimulatory switch receptor improves T-cell anti-tumor function

Shiran Hoogi<sup>†</sup>, Vasyli Eisenberg<sup>†</sup>, Shimrit Mayer, Astar Shamul, Tilda Barliya and Cyrille J. Cohen<sup>\*†</sup>

## Abstract

**Background:** Tumors can employ different mechanisms to evade immune surveillance and function. Overexpression of co-inhibitory ligands that bind to checkpoint molecules on the surface of T-cells can greatly impair the function of latter. TIGIT (T cell immunoreceptor with Ig and ITIM domains) is such a co-inhibitory receptor expressed by T and NK cells which, upon binding to its ligand (e.g., CD155), can diminish cytokine production and effector function. Additionally, the absence of positive co-stimulation at the tumor site can further dampen T-cell response.

**Methods:** As T-cell genetic engineering has become clinically-relevant in the recent years, we devised herein a strategy aimed at enhancing T-cell anti-tumor function by diverting T-cell coinhibitory signals into positive ones using a chimeric costimulatory switch receptor (CSR) composed of the TIGIT exodomain fused to the signaling domain of CD28.

**Results:** After selecting an optimized TIGIT-28 CSR, we co-transduced it along with tumor-specific TCR or CAR into human T-cells. TIGIT-28-equipped T-cells exhibited enhanced cytokine secretion and upregulation of activation markers upon co-culture with tumor cells. TIGIT-28 enhancing capability was also demonstrated in an original in vitro model of T-cell of hypofunction induction upon repetitive antigen exposure. Finally, we tested the function of this molecule in the context of a xenograft model of established human melanoma tumors and showed that TIGIT-28-engineered human T-cells demonstrated superior anti-tumor function.

**Conclusion:** Overall, we propose that TIGIT-based CSR can substantially enhance T-cell function and thus contribute to the improvement of engineered T cell-based immunotherapy.

**Keywords:** TIGIT, T-cell engineering, Tumor immunotherapy, Costimulation, Chimeric receptors

## Background

T-cell activation and function are dependent on multiple signals. First and foremost, a specificity signal mediated by the TCR (T-cell receptor) upon recognition of a specific antigenic peptide presented by MHC molecules is needed to activate the cell. In addition, co-stimulatory/inhibitory molecules can supply a second signal that can impact on T-cell function, proliferation and response. Amongst the different receptors participating in this second signal, CD28, ICOS, 4-1BB etc. are considered co-

stimulatory and CTLA4, PD1, LAG3, Tim-3, and TIGIT enforce an inhibitory phenotype [1, 2]. The latter, TIGIT (T cell immunoreceptor with Ig and ITIM domains), is a checkpoint molecule that belongs to the poliovirus receptor (PVR)/nectin family and it was identified by Yu and colleagues [3]. TIGIT is expressed by lymphocytes, mainly by NK cells, CD4<sup>+</sup>, CD8<sup>+</sup> and regulatory T cells (T<sub>reg</sub>). It is crucial for balancing T cell activation and for protection from autoimmunity [4–7].

Similarly to the antagonistic relationship of CTLA-4/CD28 with their ligands, TIGIT competes with a “positive” (stimulatory) receptor CD226 (also known as DNAM1). Both can bind to either of the two following ligands, CD155 and CD112, though TIGIT does so with

\* Correspondence: [cohency@biu.ac.il](mailto:cohency@biu.ac.il); [Cyrille.Cohen@biu.ac.il](mailto:Cyrille.Cohen@biu.ac.il)

<sup>†</sup>Shiran Hoogi and Vasyli Eisenberg contributed equally to this work. The Laboratory of Tumor Immunology and Immunotherapy, The Mina and Everard Goodman Faculty of Life Sciences, Bar-Ilan University, 52900-02 Ramat Gan, Israel



a higher affinity [8–10]. It is important to mention that TIGIT also binds to CD155 with higher affinity than CD112 [4, 11]. TIGIT expression on naïve T cells is usually low, though it is upregulated following activation [10], and particularly on exhausted T cells in the tumor microenvironment (TME) [12]. TIGIT was shown to inhibit T cell proliferation and activation upon binding to CD155 [13, 14]. Similarly to other immune checkpoint ligands, TIGIT ligands are often overexpressed in cancer cells [15–18] while TIGIT is significantly upregulated in chronically stimulated or exhausted tumor-infiltrating T cells [14, 19, 20]. TIGIT activation can reduce NK cell cytotoxicity [21] and CTL proliferation and cytokine production via SHIP1-mediated mechanisms causing downstream inhibition of NF- $\kappa$ B, PI3K and MAPK pathways, and thereby diminishing the effectiveness of the cellular immune response [10, 13, 22, 23]. Moreover, high TIGIT expression on CD8<sup>+</sup> T cells is associated with diverse malignancies include gastric cancer [12] and refractory hematological cancer and their relapse [14, 19, 20]. Thus, TIGIT represents an attractive target for immunotherapeutic intervention.

In the past decade, a tremendous progress was achieved in the treatment of cancer due to the development of immunotherapeutic approaches that include the use of checkpoint inhibitors, personalized cancer vaccines and the adoptive cell transfer (ACT) of tumor specific lymphocytes (either tumor infiltrating or genetically engineered T-cells) [24]. T-cell engineering was primarily designed to endow T cells with novel specificities, and this can be achieved by expressing either a T cell receptor (TCR) or a chimeric antigen receptor (CAR) consisting of a targeting moiety (e.g., scFv) fused to an activation domain (that incorporate usually a co-stimulation portion and the CD3 $\zeta$  intracellular domain).

An important difference between native TCR and CAR is the inclusion of co-stimulatory domain(s) in the latter. To recruit co-stimulation in the context of TCRs, it is possible to either transduced them with CD28 or 4-1BB [25, 26], provided their respective ligands are expressed by the target cells. Another approach is based on the use of chimeric costimulatory switch receptor (CSR) based on the exodomain of coinhibitory receptors and the endodomain of costimulatory ones [27]. We and others demonstrated that CSRs based on PD1 can enhance T-cell function in the presence of inhibitory ligands expressed by tumors cells [28, 29]. Whereas therapeutic approaches that target immune checkpoint receptors such as CTLA4 and PD-1 have demonstrated unprecedented results in cancer patients, not all of them will eventually benefit from these treatments [10]. Thus, it is desirable to assess the impact of targeting additional immune checkpoint receptors.

Herein, we aimed to develop and characterize a TIGIT-based CSR in the form of a chimeric receptor composed

of TIGIT and CD28. We also describe an original in vitro model of T-cell hypofunction induction upon repetitive antigen exposure, in which this TIGIT CSR was able to enhance T-cell function. We were able to express high level of this chimeric receptor and we demonstrated its enhancing potential both in vitro, but more importantly, in a xenograft mouse model of human tumors.

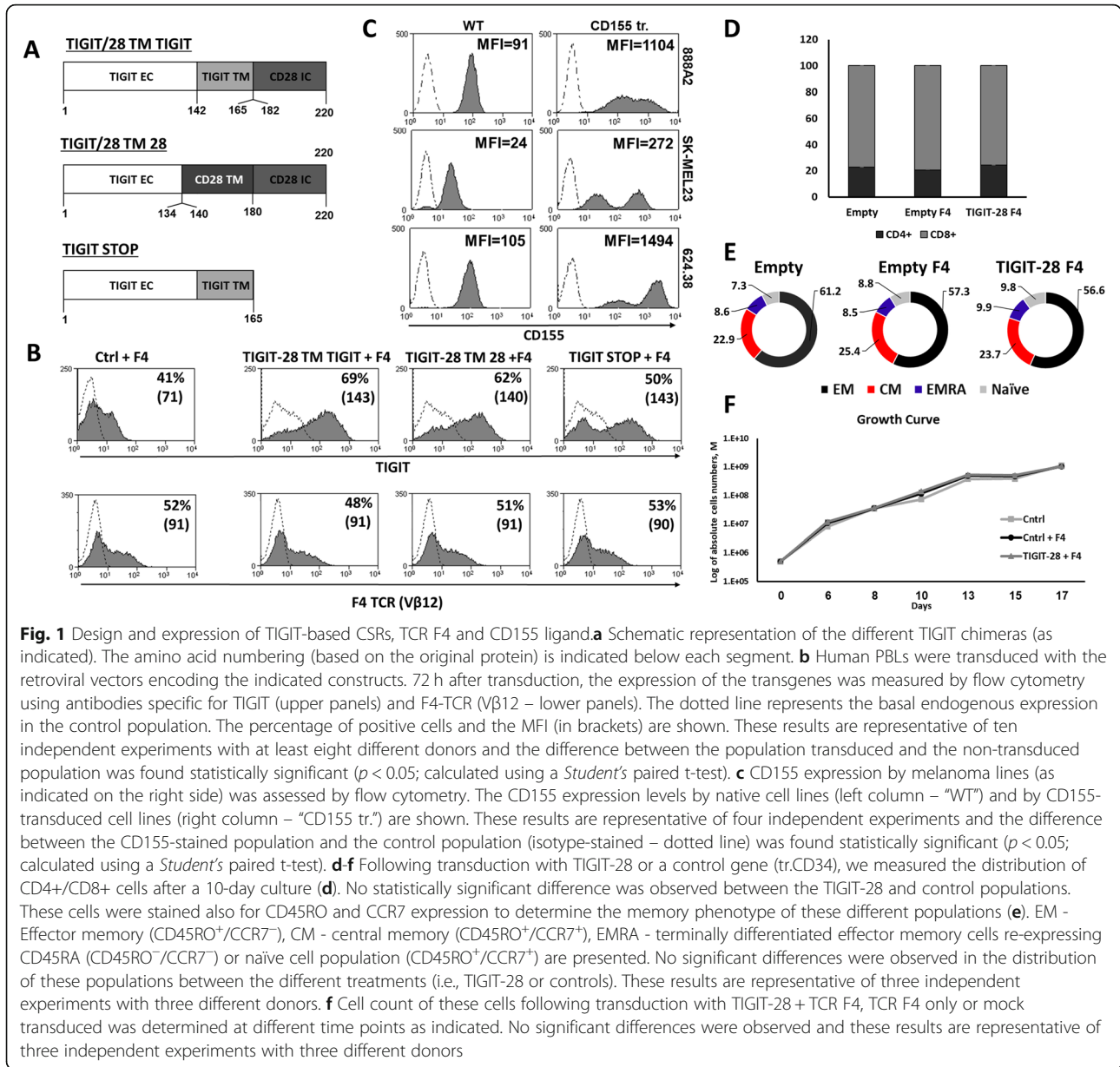
## Methods

### Patient PBMCs and cell lines

All of the PBMCs used in this study were from healthy donors obtained from the Israeli Blood Bank (Sheba Medical Center, Tel-Hashomer, Israel). Melanoma cell lines HLA-A2<sup>+</sup>/MART-1<sup>+</sup> (624.38) and HLA-A2<sup>-</sup>/MART-1<sup>+</sup> (888) were generated at the Surgery Branch (National Cancer Institute, National Institutes of Health, Bethesda, MD) as described previously [30]. 888A2 is an HLA-A2-transduced line derived from 888. SK-MEL23 is a HLA-A2<sup>+</sup> melanoma cell line (CVCL\_6027). A375 (CVCL\_0132) melanoma is HLA-A2<sup>+</sup>/MART-1<sup>-</sup>. Adherent cells were cultured in DMEM (Invitrogen, Carlsbad, CA), supplemented with 10% heat-inactivated Fetal Bovine Serum (Biological Industries, Beth Haemek, Israel) and were maintained in a 37 °C and 5% CO<sub>2</sub> incubator. CD19-expressing B-cell targets were Raji (CCL86), JY (CVCL\_0108), 721.221 (CVCL\_6263), Nalm6 (CVCL\_0092). K562 (CCL\_243; which is CD19 negative) was engineered to express the CD19 antigen following retroviral transduction with a CD19 encoding vector. Non-adherent tumor cells were cultured in RPMI (Invitrogen, Carlsbad, CA), supplemented with 10% heat-inactivated Fetal Bovine Serum (Biological Industries, Beth Haemek, Israel) and were maintained in a 37 °C and 5% CO<sub>2</sub> incubator. Lymphocytes were cultured in BioTarget medium (Biological Industries, Beth Haemek, Israel) supplemented with 10% heat-inactivated FBS and 300 IU/ml IL-2 (Peprotech, Israel) and maintained at 37 °C and 5% CO<sub>2</sub>.

### TCR and TIGIT chimeras retroviral constructs

The  $\alpha$  and  $\beta$  chains from the previously characterized TCRs specific for MART-1<sub>26-35</sub> termed F4 (or DMF4) and F5 (or DMF5) were subcloned into the MSGV1 vector as described previously [30]. Similarly, we synthesized and cloned an anti-CD19-BBz CAR into this vector. The chimeras TIGIT-28 TM TIGIT (TMTi) and TIGIT-28 TM 28 (TM28) were created by overlapping PCR and their amino acid composition is indicated in Fig. 1a. A truncated version of TIGIT, TIGIT-STOP was produced by amplifying and cloning the TIGIT cDNA between 1 and 165 aa, followed by a stop-codon. The retroviral vector backbone used in this study, pMSGV1, is a derivative of the MSCV-based splice-gag vector (pMSGV), which uses a murine stem cell virus (MSCV) long terminal repeat and has been previously described [31].



**Transduction of PBLs**

For transient virus production, transfection of  $2.5 \times 10^5$  293GP cells with 2 μg DNA of MSGV1-based retroviral construct and 1 μg envelop plasmid (VSV-G) was performed using JetPrime transfection reagent (Polyplus, France). After 4 h, the medium was replaced. Retroviral supernatant was collected 48 h after the DNA transfection. Freshly isolated PBLs were stimulated in the presence of 50 ng/ml OKT3 (eBioscience, San Diego, CA). 2 days after stimulation, lymphocytes were transduced consecutively, first with a TCR or CAR, and 24 h after this, with supernatant encoding the CSR or control. Transduction was performed in non-treated tissue culture dishes (Nunc, Rochester NY) that had been pre-

coated with RetroNectin (Takara, Japan) and retroviral vectors as previously described [30].

**Flow cytometry analysis and mAb**

Fluorophore-labeled anti-human CD4, CD8, CD25, CD69, CD137, CD134 (OX40), TIGIT, CD155, CCR7, CD45RO and CD34 were purchased from BioLegend (San Diego, CA). Anti-Vβ12 antibody specific for F4 TCRβ was purchased from Beckman-Coulter/Immunotech (Marseille, France). Biotinylated Protein-L was purchased from GenScript (Piscata, NJ). Immunofluorescence, analyzed as the relative log fluorescence of gated live cells, was measured using a CyAn-ADP flow cytometer (Beckman Coulter, Brea). Approximately  $1 \times 10^4$  to  $1 \times 10^5$  cells (gated on live

lymphocytes) were analyzed. Cells were stained in a FACS buffer made of PBS, 0.5% BSA, and 0.02% sodium azide.

#### Cytokine release assays

PBL cultures were tested for reactivity in cytokine release assays using commercially available ELISA kits for IFN $\gamma$ , IL-2 and TNF $\alpha$  (R&D Systems, Minneapolis, MN). For these assays,  $1 \times 10^5$  responder cells (PBL) and  $1 \times 10^5$  stimulator cells (tumor cells) were incubated in a 0.2-ml culture volume in individual wells of 96-well plates. Stimulator cells and responder cells were co-cultured for 18 h. Cytokine secretion was measured in culture supernatants diluted to be in the linear range of the assay.

#### Cell separation

T-cell populations were separated using a magnetic beads-based approach for negative selection (EasySep TM - StemCell Technologies Inc., Canada).

#### Intracellular staining

Following a 30-min co-culture of  $7 \times 10^5$  transduced T-cells with  $3 \times 10^5$  melanoma targets, the cells were fixed with formaldehyde 5% and permeabilized using ice-cold 90% methanol for 20 min. Then, the cells were washed in FACS buffer, stained for either phosphorylated ERK (clone D13.14.4E - Cell Signaling Technology, Danvers MA) or Bcl-xL (clone 7B2.5 - Southern Biotech, Birmingham AL) expression using a specific antibody and analyzed by flow cytometry, gated on the lymphocyte population.

#### Cell mediated cytotoxicity assay

Target cells were co-cultured with transduced lymphocytes at 37 °C for 4 h, at E:T ratio of 1:3,1:6 and 1:12. All wells was completed to final volume 100ul. After the co-culture, equal volume of CytoTox-ONE™ (Promega, Madison, WI) according to manufacturer's manual.

#### In vitro hypofunction induction upon repetitive antigen exposure assay

$1 \times 10^6$  transduced lymphocytes were co-cultured with  $1 \times 10^5$  tumor target cells. Every 2 days, the effector cells were transferred to a new culture vessel in which  $1 \times 10^5$  tumor cells were previously seeded (Fig. 5a). This was repeated 4 times (i.e. a total of 8 days). At the end of this 8-day co-culture, these T-cells were tested in different assays as indicated.

#### Established tumor assay

6–12 weeks year-old NOD/SCID/Gamma mice (Harlan, Jerusalem, Israel) were subcutaneous injected with  $1 \times 10^6$  SK-MEL23/155 cells resuspended in 100  $\mu$ l HBSS medium (Biological Industries, Beth Haemek, Israel) and 100  $\mu$ l Cultrex matrix (Trevigen). Two intravenous injections of  $5 \times 10^6$  transduced lymphocytes resuspended in 200  $\mu$ l

HBSS medium were performed at day 7 and 10 after tumor inoculation. Tumor size was measured every 2–3 days using a caliper in a blinded fashion. All the procedures were performed according to the guidelines of the university committee for animal welfare.

## Results

### Design and expression of TIGIT-chimeric constructs

The TIGIT receptor is a T-cell co-inhibitory molecule capable of downregulating T-cell function via binding to its ligands, often overexpressed by tumor cells. We aimed to take advantage of the presence of inhibitory ligands expressed by tumor cells to boost T-cell function using a costimulatory retargeting molecule. To this end, we designed and evaluated two TIGIT-based CSRs as described below. We hypothesized that such chimeric receptor could successfully convey positive signals to T cells following binding to TIGIT ligands. These TIGIT-based chimeras were constructed by fusing the extracellular domain of TIGIT to intracellular portion of the CD28 molecule (TIGIT-28) using a transmembrane (TM) portion derived from either TIGIT or CD28 (Fig. 1a). To enable the antigen-specific recognition of the tumor target cells, we utilized the MART1-specific TCR F4 previously characterized and used in clinical trials [32]. Following transduction of the chimeras and the TCR into primary human T-cells, we tested the expression of these molecules by flow cytometry. To negate any difference in function deriving from a differential TCR expression between the examined experimental groups, we first performed a TCR transduction step and then used these cells for subsequent transduction with the TIGIT or control construct. We also carefully and constantly controlled for equal TCR expression following transduction. As depicted in Fig. 1b, we were able to express both TIGIT-28 constructs (TM TIGIT and TM CD28) in human T-cells efficiently without any selection. However, TM TIGIT (i.e. that contained the native TIGIT TM domain) was better expressed than TM CD28—69% (MFI = 143) vs. 62% (MFI = 140) of positive cells ( $p < 0.05$ ). As aforementioned, the levels of expression of F4-TCR were similar between all tested groups (approximately 50%, with MFI = 90). Overall, these levels of expression by transduced PBLs cultured in vitro was sustained for more than 30 days without selection (data not shown).

TIGIT has been shown to bind to two ligands - CD155 and, with a lesser affinity, CD112. CD155 is a co-inhibitory ligand expressed on multiple human malignant tumors, including melanoma cells [15, 16, 18, 33]. Thus, we examined CD155 expression level on multiple melanoma lines. As seen in Fig. 1c, all the melanoma lines we tested expressed significant levels of CD155 (ranging from



MFI = 24 to 105;  $p < 0.05$ ). Additionally, to examine the impact of CD155 expression on T-cell function, 888A2, SK-MEL23 and 624.38 melanoma lines were transduced to enforce CD155 expression (Fig. 1c).

Following transduction with TIGIT-28 or a control gene (tr.CD34), we measured the distribution of CD4<sup>+</sup>/CD8<sup>+</sup> cells after a 10-day culture. As seen in Fig. 1d, we did not observe a statistically significant difference between the TIGIT-28 and control populations with an approximate CD4/CD8 ratio of 20%/80%. Similarly, we also assessed the memory phenotype of these different populations by staining them for CD45RO and CCR7 expression and dividing them into effector memory, central memory, EMRA (terminally differentiated effector memory cells re-expressing CD45RA) or naïve cell population. No significant differences were observed in the distribution of these populations between the different treatments (i.e., TIGIT-28 or controls). Finally, we also followed the cell count of these cells following transduction with TIGIT-28 + TCR F4, TCR F4 only or mock transduced. As seen in Fig. 1f, we observed a similar cellular growth pattern between the different group. Overall, the transduction of TIGIT-28 did not significantly alter CD4/CD8 ratio, memory phenotype or in vitro growth pattern of engineered T-cells.

#### **TIGIT-28 (TM TIGIT) enhances T cell function and cytokine secretion**

After establishing our experimental system, we tested the biological activity of both TIGIT-28 constructs (TM TIGIT and TM CD28) and their capacity to enhance a TCR-driven antigen specific response. Human primary T-cells transduced to express a TIGIT-28 chimera (TM TIGIT or TM28) along with the F4 TCR were co-cultured with several melanoma lines. Then, we assessed the secretion of cytokines important for anti-tumor T cells responses, namely TNF $\alpha$ , IFN $\gamma$  and IL-2 [34]. As shown in Fig. 2a, TIGIT-28 chimeras significantly enhanced TCR F4 TNF $\alpha$  secretion when compared to control transduced cells or even to a truncated TIGIT receptor (TIGIT-STOP) that did not include the CD28 moiety. For example, when normalizing TNF $\alpha$  secretions to that observed in the control TCR F4 only group (100% - equivalent to an average of 4601 pg/ml against the 888A2 target), we observed an average increase of 74% in the TM TIGIT group and of 62% for TM28, in co-cultures with 888A2 target cell line ( $n = 3$ ;  $p < 0.05$ ). Additionally, we observed only a 15% improvement in TNF $\alpha$  secretion in the TIGIT-STOP (control) group which clearly indicates that the CD28 portion is essential for the improved function of the CSR. Overall, as TIGIT-28 with the transmembrane portion of TIGIT (TIGIT-28 TM TIGIT) was better expressed and functioned superiorly compared to that with TM28, we selected it as the lead CSR for further

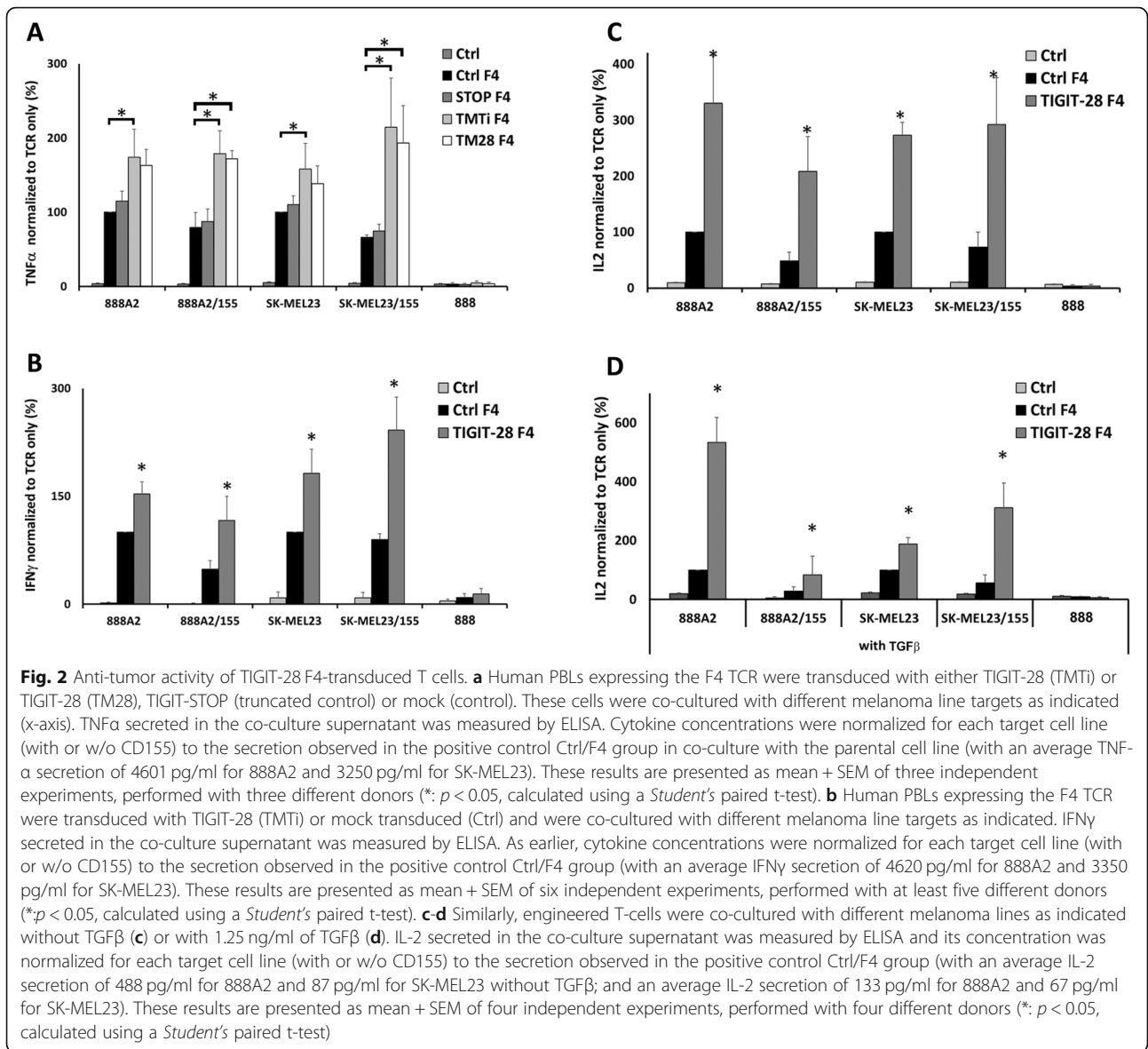
assays. Henceforth, TIGIT-28 TM TIGIT will be termed TIGIT-28 in this study. As seen in Fig. 2b-c and similarly to TNF, we observed superior secretion of IFN $\gamma$  and IL-2 in T-cells expressing TIGIT-28 compared to the control TCR only group (e.g., up to 2.8 times more IFN $\gamma$  in co-culture with the SK-MEL23 cells line - Fig. 2b). Notably, no-significant cytokine secretion was measured in control co-cultures with HLA-A2<sup>-</sup> 888 melanoma cells.

T-cells encounter a hostile environment when interacting with solid tumors. One of the main immunosuppressive protagonists is the cytokine TGF $\beta$  which can dampen critically T-cell function, T cell proliferation and IL-2 production [35, 36]. Since TIGIT-28 mediated an increase in cytokine secretion in the presence of CD155 (Fig. 2a-c), we sought to examine if this pattern would be preserved in the context of an additional inhibitory stimulus. We set up an overnight co-culture with melanoma cells in the presence of soluble TGF $\beta$  (1.25 ng/ml) and measured IL-2 secretion in the supernatant by ELISA. As anticipated, IL-2 secretion was reduced in the presence of TGF $\beta$ , when the target did or did not overexpress CD155 (Fig. 2d). Nevertheless, TIGIT-28 transduced T-cells maintained a higher secretion compared to the control (TCR only) in the presence of TGF $\beta$  (an average of 708 pg/ml vs. 137 pg/ml in co-culture with 888A2;  $p < 0.05$ ). This suggests that TIGIT-28 transduced cells may function better in a hostile tumor micro-environment compared to unmanipulated cells. In conclusion, TIGIT-28-expressing T cells demonstrate an improved anti-tumor cytokine secretion capability.

#### **Activation marker upregulation and increased pERK and Bcl-xL levels in TIGIT-28 transduced T-lymphocytes**

TIGIT can directly inhibit T cell proliferation and lower their activation phenotype including the downregulation of CD69 and CD25 markers [9]. Thus, we sought to determine if TIGIT-28 could counteract this and enhance the expression of T-cell activation markers such as CD25, CD69 and 41BB (CD137). To this end, the expression of these activation markers was assessed on TIGIT-28/F4 or F4 (control) transduced T-cells that were co-cultured with different targets. Compared to the control T-cell population, TIGIT-28-engineered cells demonstrated a statistically significant enhanced expression of these markers: for instance, for CD25, we detected 50% of positive cells for TIGIT-28 vs. 30% for the control (Fig. 3a;  $p < 0.05$ ). Similarly, we noted a proportion of 31% of positive cells for 41BB in the TIGIT-28 sample compared to 24% in the control one (Fig. 3b;  $p < 0.05$ ) and of 58% vs. 45% for CD69 respectively (Fig. 3c;  $p < 0.05$ ).

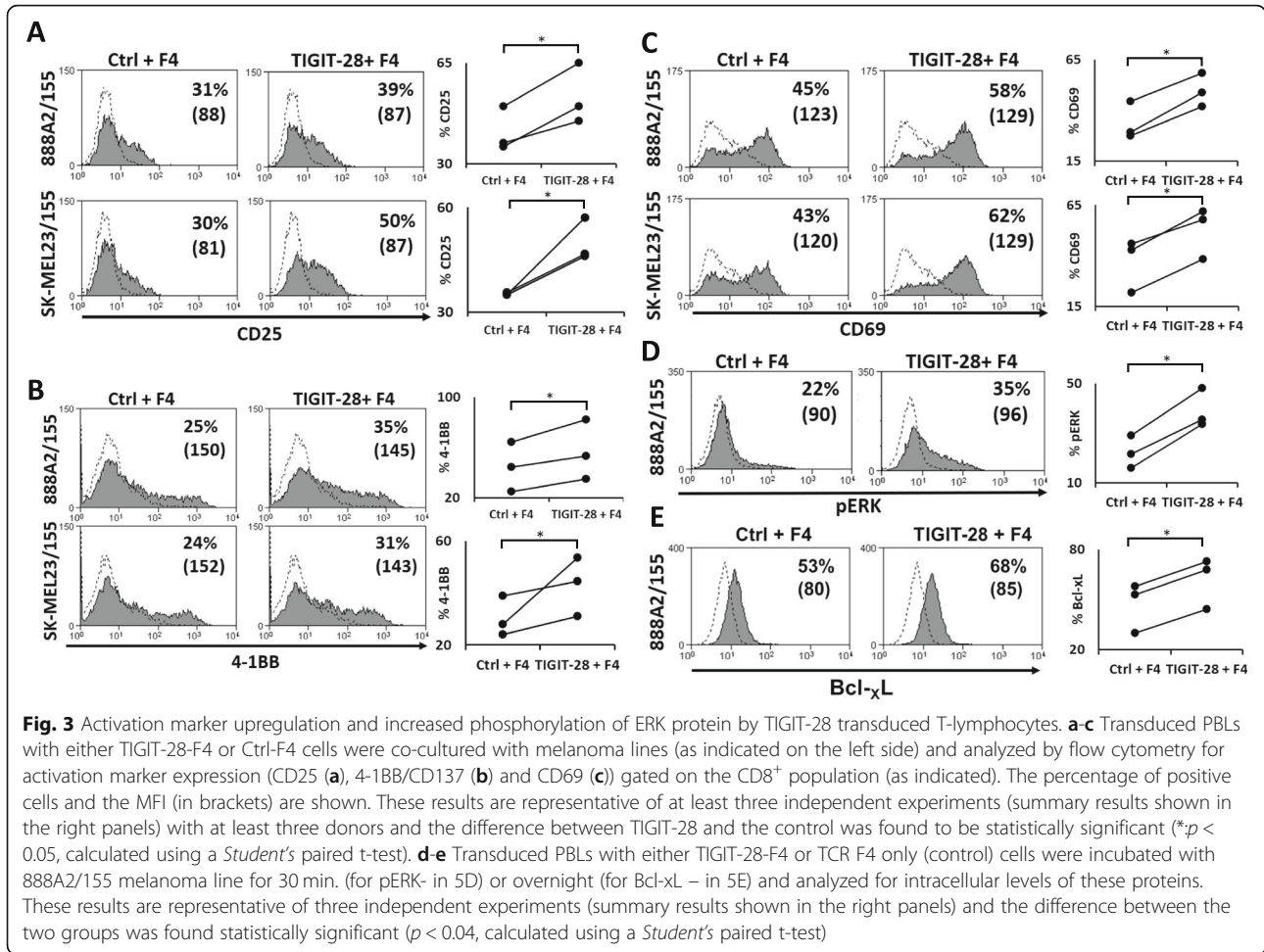
Activation of the CD28 pathway has been shown to enhance the activation and survival of T-cells via several signaling molecules such as pERK and Bcl-xL [37, 38]. We thus assessed if TIGIT-28 engineered T-cell may actively augment ERK phosphorylation in co-cultures with



tumor cells. TIGIT-28- or control-transduced TCR F4 T-cells were incubated with target melanoma cells for 30 min and then analyzed for intracellular pERK expression. As seen in Fig. 3d, we observed a significant increase in pERK expression (e.g. 35% vs. 22% of pERK-positive cells respectively;  $p < 0.05$ ). No significant pERK elevation was observed in control co-cultures with the melanoma line 888 (not shown). We also examined whether TIGIT-28 could lead to an increased Bcl-xL expression in F4 transduced T cells. Following an overnight co-culture, we performed an intracellular staining of engineered T-cells with anti-Bcl-xL. As depicted in Fig. 3e, Bcl-xL expression in TIGIT-28/F4 was upregulated compared to that assessed in F4 control cells (29% vs 3%;  $p < 0.05$ ). These results demonstrate that TIGIT-28 is capable of activating the CD28 signaling cascade.

### TIGIT-28 can enhance the function of high affinity TCR expressing T-cells

The affinity range of TCRs to their cognate MHC/peptide complex can differ in 1–2 orders of magnitude between different receptors targeting the same complex [39, 40]. To assess the potential benefit of TIGIT-28 in the context of a high-affinity TCR, we made use of the MART1 specific TCR DMF5 (F5) and investigated whether TIGIT-28 could also enhance its function. We previously showed that as a CD8-independent TCR, the F5 TCR can also function in CD4<sup>+</sup> T cells [30]. To test the potential beneficial effect of TIGIT-28 in CD4<sup>+</sup> T-cells, we co-cultured T-cells transduced with either Ctrl/F5 or TIGIT-28/F5 (Fig. 4a) with several targets and stained these cells for OX40 (CD134) - a classical CD4<sup>+</sup> activation marker expression [41]. We noted a proportion of 23% of OX40

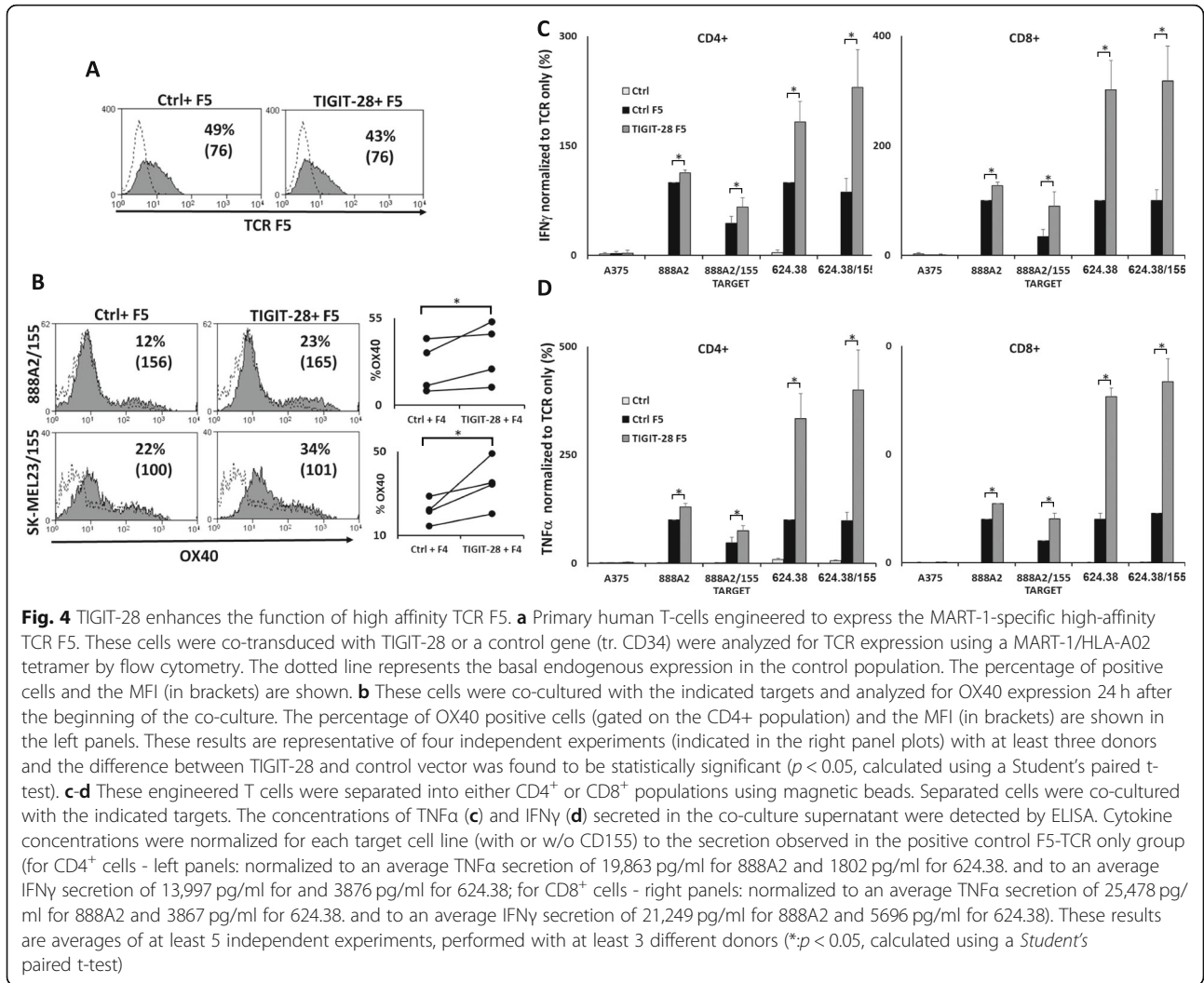


positive cells in the TIGIT-28 sample compared to 12% in the control one (Fig. 4b). TIGIT-28/F5 transduced T-cells were then separated into CD4<sup>+</sup> and CD8<sup>+</sup> population using magnetic beads. The cells were co-cultured with different human melanoma lines and following this, we measured secretion of TNF $\alpha$  and IFN $\gamma$  (Fig. 4c-d); when normalized to the activity of F5 TCR only T-cells against different targets, both CD4<sup>+</sup> and CD8<sup>+</sup> T-cells transduced to express TIGIT-28/F5 secreted higher levels of cytokines than the control TCR-only transduced T cells (e.g. approximately 20–60% more IFN $\gamma$  and TNF $\alpha$  secretion were observed in co-culture with different targets expressing high levels of CD155; *p* < 0.05). Thus, TIGIT-28 can generically improve the function of CD4<sup>+</sup> and CD8<sup>+</sup> T-cells expressing a high-affinity TCR.

### TIGIT-28 can enhance the function of CAR T-cells depending on CD155 expression

In addition to classical TCRs, we also sought to examine if TIGIT-CD28 could improve the function of another type of activating receptor such as chimeric antigen receptor (CAR). We chose to focus on a CD19 specific

2nd generation CAR that incorporate the 41BB signaling moiety. T-cells transduced to express both CAR and TIGIT-28 CSR (or mock-control) (Fig. 5a). In parallel, we also sought to determine to what extent TIGIT-28 functional enhancement was dependent on CD155 expression by targets cells. To this end, we assessed CD155 expression on different CD19<sup>+</sup> target cells. As seen in Fig. 5b, we could not detect any CD155 surface expression on Raji, JY and 721.221 targets while K562/CD19 and Nalm6 expressed considerable levels. In parallel, these tumor lines were retrovirally transduced with a construct encoding CD155 and the expression of CD155 by these engineered target cells is also shown in Fig. 5b (lower panels). We then co-cultured these native or CD155 engineered CD19-expressing targets (or antigen negative K562 control) with CD19-CAR T-cells also transduced to express TIGIT-28 (or a control gene). As seen in Fig. 5c-e, TIGIT-28 was able to mediate an increased secretion of cytokine compared to control (up to 50% more TNF $\alpha$  in co-culture with K562-CD19/155; *p* < 0.05). Interestingly, no significant enhancement by TIGIT-28 was noted in co-cultures with CD155-negative



**Fig. 4** TIGIT-28 enhances the function of high affinity TCR F5. **a** Primary human T-cells engineered to express the MART-1-specific high-affinity TCR F5. These cells were co-transduced with TIGIT-28 or a control gene (tr. CD34) were analyzed for TCR expression using a MART-1/HLA-A02 tetramer by flow cytometry. The dotted line represents the basal endogenous expression in the control population. The percentage of positive cells and the MFI (in brackets) are shown. **b** These cells were co-cultured with the indicated targets and analyzed for OX40 expression 24 h after the beginning of the co-culture. The percentage of OX40 positive cells (gated on the CD4+ population) and the MFI (in brackets) are shown in the left panels. These results are representative of four independent experiments (indicated in the right panel plots) with at least three donors and the difference between TIGIT-28 and control vector was found to be statistically significant ( $p < 0.05$ , calculated using a Student's paired t-test). **c-d** These engineered T cells were separated into either CD4+ or CD8+ populations using magnetic beads. Separated cells were co-cultured with the indicated targets. The concentrations of TNF $\alpha$  (**c**) and IFN $\gamma$  (**d**) secreted in the co-culture supernatant were detected by ELISA. Cytokine concentrations were normalized for each target cell line (with or w/o CD155) to the secretion observed in the positive control F5-TCR only group (for CD4+ cells - left panels: normalized to an average TNF $\alpha$  secretion of 19,863 pg/ml for 888A2 and 1802 pg/ml for 624.38, and to an average IFN $\gamma$  secretion of 13,997 pg/ml for 888A2 and 3876 pg/ml for 624.38; for CD8+ cells - right panels: normalized to an average TNF $\alpha$  secretion of 25,478 pg/ml for 888A2 and 3867 pg/ml for 624.38, and to an average IFN $\gamma$  secretion of 21,249 pg/ml for 888A2 and 5696 pg/ml for 624.38). These results are averages of at least 5 independent experiments, performed with at least 3 different donors (\* $p < 0.05$ , calculated using a Student's paired t-test)

targets (Fig. 5c) indicating that TIGIT-28 function is dependent on CD155 expression by the target cells. To ascertain this, we also plotted relative improvement in TNF $\alpha$  secretion by the TIGIT-28 population over that of the control population as a function of CD155 expression by the target cells and we observed a significant correlation ( $R^2 = 0.8923$  using linear regression; Additional file 1: Figure S1) between both parameters.

In conclusion, TIGIT-28 can improve CAR-T cell function and this enhancement is dependent on CD155 expression by target cells.

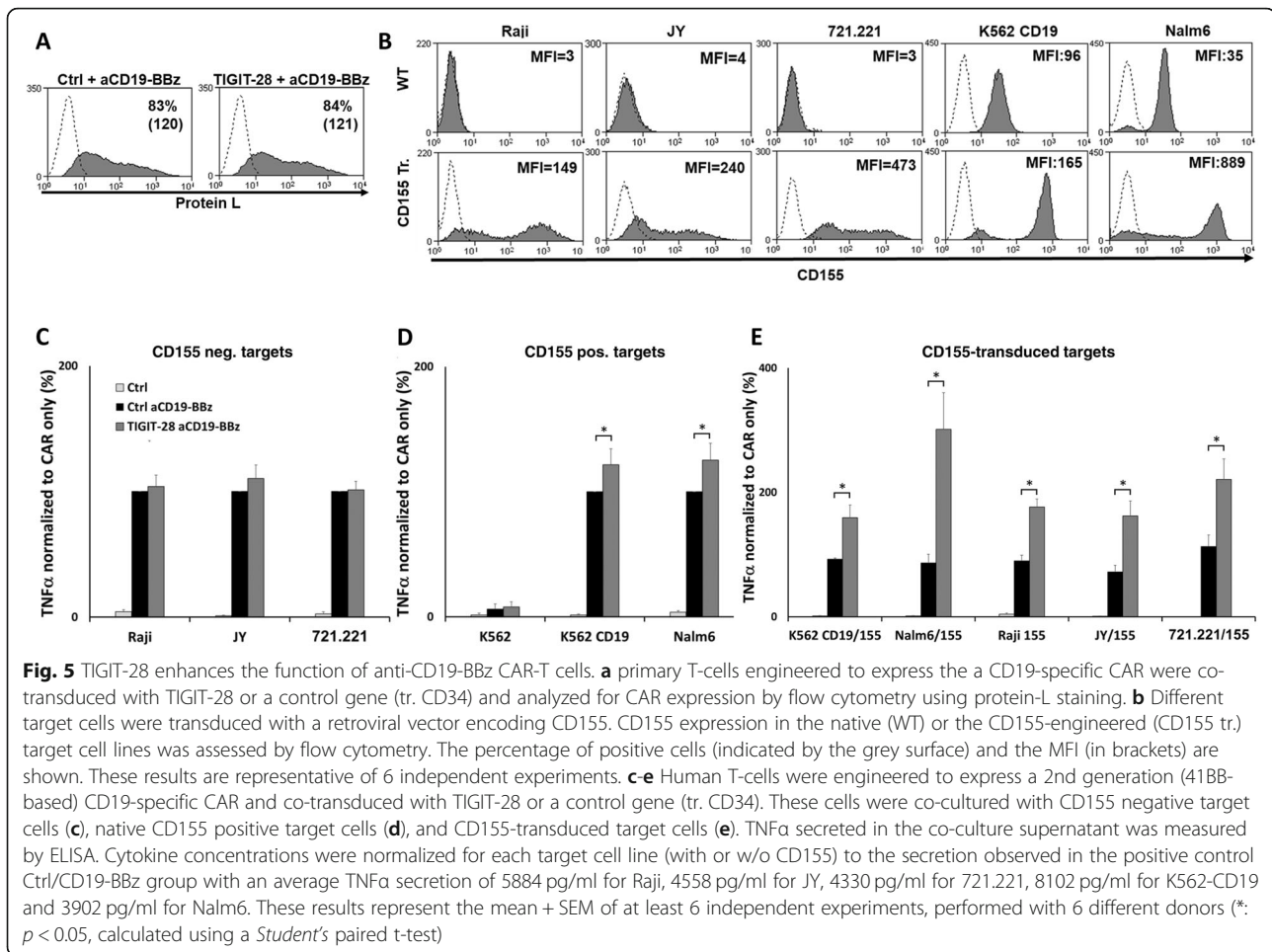
**TIGIT-28 can help rescuing hypofunctional T cells**

Exhaustion/hypofunction of T cells following repetitive stimulation, a lack of positive co-stimulation and constant exposure to the immunosuppressive TME can greatly impair their anti-tumor function. Thus, we sought to examine if the concomitant expression of a CSR in TCR-transduced T-cells could rescue them from a hyporesponsive state [42] acquired over time following

repetitive antigen exposure. To this end, we developed an in vitro experimental system to examine the function of exhausted T-cells; in this system, we performed long co-cultures of F4 only or F4 + TIGIT-28-transduced T cells with tumor cells which were replenished every 48 h for a duration of 8 days. As an additional control, T-cells were incubated during 8 days with an antigen-negative tumor and we surmised that in these conditions, T-cells would not reach an hypofunctional state. Then, these “exhausted/tumor challenged” T-cells were isolated and taken to a final co-culture experiment to assess their basic functionality against antigen-positive targets by means of cytokine secretion (see Fig. 6a).

As seen in Fig. 6b-c, after a period of 8 days, F4 only T-cells, which were subjected to long co-cultures with a MART1+/HLA-A2+ target cell line (888A2), displayed a dramatic reduction in cytokines secretion, akin to a hyporesponsive state; for example, when normalized to the IFN $\gamma$  secretion observed by TCR-F4 only T-cells previously incubated with antigen negative targets during 8





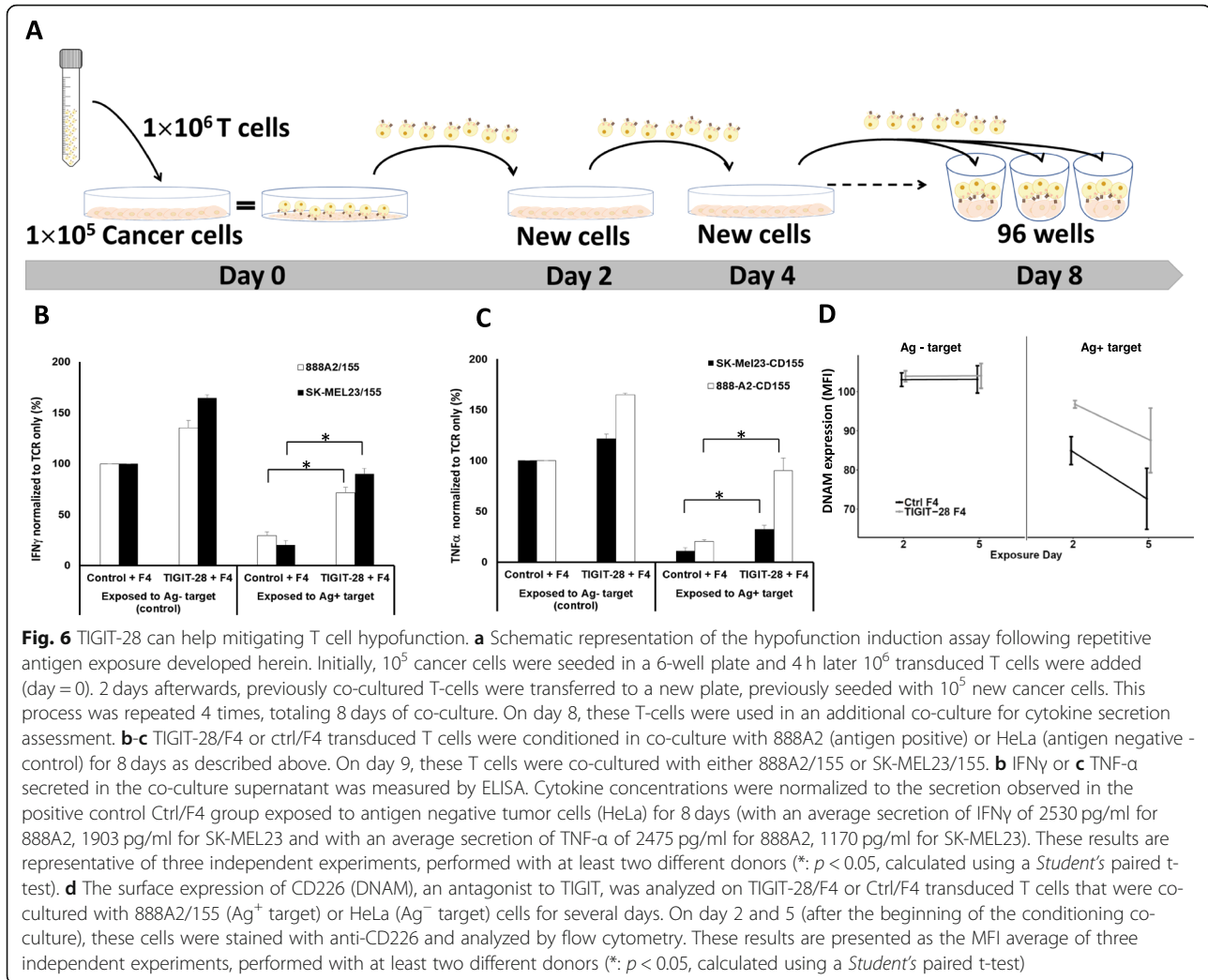
days, that of T-cells incubated with 888A2 went down by 80% (i.e., 100% vs. 20.3% respectively) in co-cultures with the SK-MEL23/155 target. In contrast, TIGIT-28/F4 T cells exhibited much higher cytokine secretion profile (reaching in average 90.1% of the positive control;  $p < 0.05$  – Fig. 6b). This beneficial effect mediated by TIGIT-28 was not due to a differential TCR expression following these long co-cultures as F4 TCR levels (measured by flow cytometry) were similar in T-cells exposed to antigen-negative, antigen-positive targets (Additional file 1: Figure S2). This demonstrates that TIGIT-28 is able to mitigate the effects of prolonged antigen exposure on T-cell function.

TIGIT can limit lymphocyte functionality by downregulating the expression of surface receptors such as CD226 (known also as DNAM1) which conveys positive signals [8]. This mechanism has further ramifications as TIGIT and DNAM1 directly compete for the binding of the ligand CD155 [14]. Thus, we also assessed DNAM1 expression in T cells subjected to this 8-day co-culture compared to that observed in T-cells before this treatment. As seen in Fig. 6d, TIGIT-28/F4 equipped cells

were able to maintain, after several days in co-cultures with target cells, higher levels of DNAM1 surface expression compared to TCR F4-only T cells (87% vs. 72% of DNAM1 positive cells respectively on day 5 – Fig. 6d). Thus, TIGIT-28 may improve T-cell function and activation phenotype also in the case of continued challenge with tumor cells.

#### TIGIT-28 mediates superior anti-tumor cytotoxicity in xenograft model

To measure cytotoxicity exhibited by TIGIT-28 engineered T-cells, TIGIT-28/F4 or ctrl/F4 T cells were co-cultured with different targets for 4 h at different E:T ratios. As seen in Fig. 7a, we did not observe a significant difference between the two groups suggesting that TIGIT-28 expression did not impair cell-mediated cytotoxicity. Nevertheless, we assumed that a conventional 4-h cytotoxicity assay may not necessarily fully illustrate the anti-tumor activity of TIGIT-28 transduced T cells. We therefore decided to assess the anti-tumor function of TIGIT-28-transduced T-cells in vivo and examined the ability of these cells to suppress tumor growth in a human tumor xenograft mouse model.  $1 \times 10^6$



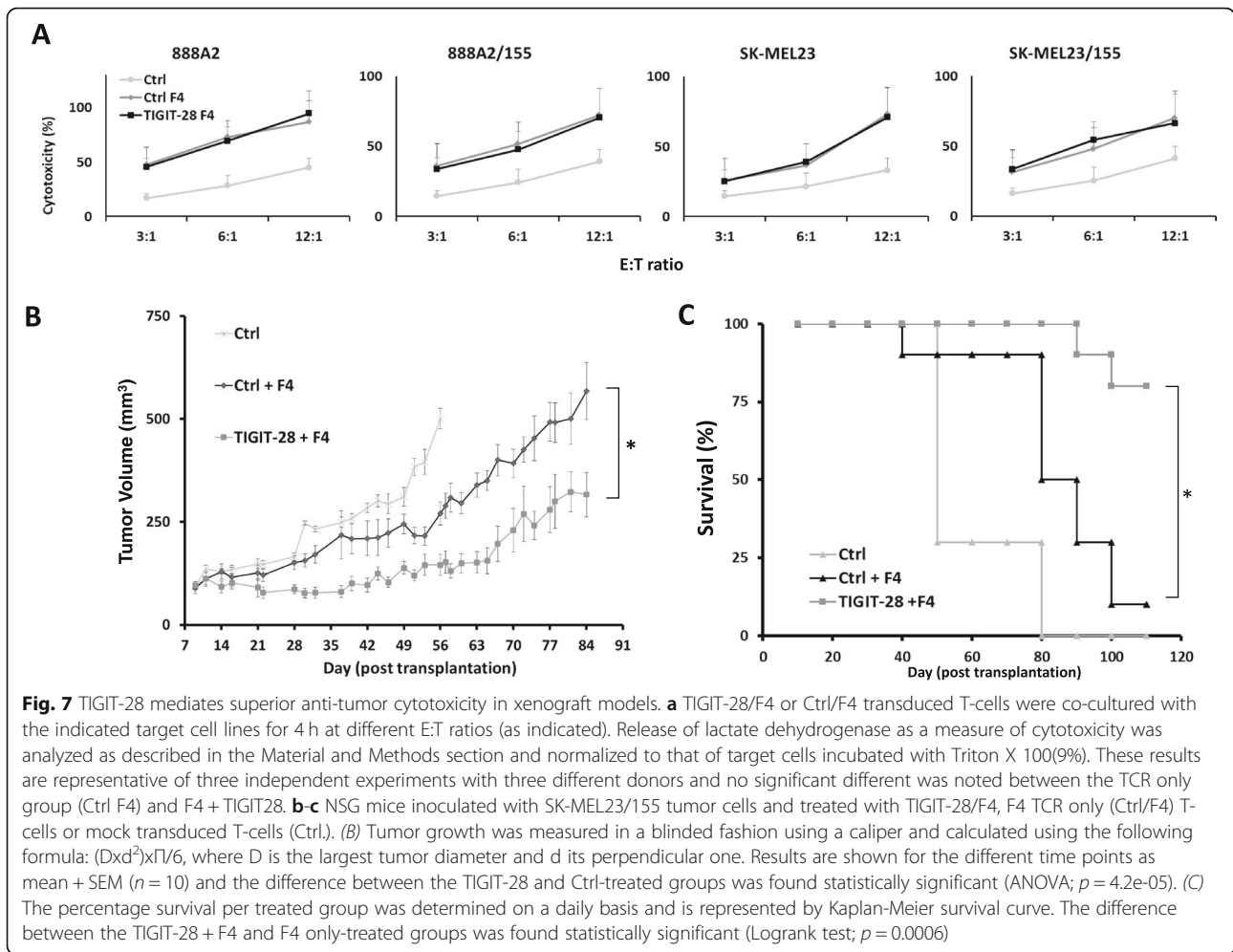
**Fig. 6** TIGIT-28 can help mitigating T cell hypofunction. **a** Schematic representation of the hypofunction induction assay following repetitive antigen exposure developed herein. Initially,  $10^5$  cancer cells were seeded in a 6-well plate and 4 h later  $10^6$  transduced T cells were added (day = 0). 2 days afterwards, previously co-cultured T-cells were transferred to a new plate, previously seeded with  $10^5$  new cancer cells. This process was repeated 4 times, totaling 8 days of co-culture. On day 8, these T-cells were used in an additional co-culture for cytokine secretion assessment. **b-c** TIGIT-28/F4 or ctrl/F4 transduced T cells were conditioned in co-culture with 888A2 (antigen positive) or HeLa (antigen negative - control) for 8 days as described above. On day 9, these T cells were co-cultured with either 888A2/155 or SK-MEL23/155. **b** IFN̳ or **c** TNF̳ secreted in the co-culture supernatant was measured by ELISA. Cytokine concentrations were normalized to the secretion observed in the positive control Ctrl/F4 group exposed to antigen negative tumor cells (HeLa) for 8 days (with an average secretion of IFN̳ of 2530 pg/ml for 888A2, 1903 pg/ml for SK-MEL23 and with an average secretion of TNF̳ of 2475 pg/ml for 888A2, 1170 pg/ml for SK-MEL23). These results are representative of three independent experiments, performed with at least two different donors (\*:  $p < 0.05$ , calculated using a Student's paired t-test). **d** The surface expression of CD226 (DNAM), an antagonist to TIGIT, was analyzed on TIGIT-28/F4 or Ctrl/F4 transduced T cells that were co-cultured with 888A2/155 (Ag<sup>+</sup> target) or HeLa (Ag<sup>-</sup> target) cells for several days. On day 2 and 5 (after the beginning of the conditioning co-culture), these cells were stained with anti-CD226 and analyzed by flow cytometry. These results are presented as the MFI average of three independent experiments, performed with at least two different donors (\*:  $p < 0.05$ , calculated using a Student's paired t-test)

tumor cells (SK-MEL23/155) were injected in the flank of immunodeficient mice. One week afterwards,  $5 \times 10^6$  T cells (TIGIT-28/F4 or Ctrl/F4) were injected IV through the tail vein. We followed tumor growth and could demonstrate that TIGIT-28/F4 T-cells mediated a significant delay in tumor growth compared to the control group that was treated with control-F4 transduced T-cells (Fig. 7b;  $n = 10$ ,  $p = 4.2e-5$ , measured by ANOVA). In two additional experiments, we also obtained a statistically significant difference between the TIGIT-28 and Ctrl-treated groups (with  $n = 5$ ;  $p = 0.0003$  and  $n = 5$ ;  $p = 0.0018$  – not shown). Moreover, at the endpoint, 83% of the TIGIT-28 treated mice survived compared to 16% in the control group (Fig. 7c). In conclusion, TIGIT-28-expressing T-cells could delay tumor growth and prolong significantly the survival of tumor-bearing mice.

## Discussion

The TIGIT/CD155 inhibitory axis is an attractive target as CD155 (PVR, necl-5) is overexpressed in multiple

cancer types including colon cancer, lung adenocarcinoma, melanoma, ovarian, breast, pancreatic cancer and glioblastoma and its expression is correlated with poor prognosis and tumor proliferation [13, 17]. To derive benefit from inhibitory ligand overexpression on tumors, we designed and expressed a CSR in the form of TIGIT exodomain fused to CD28 endo-domain. While most of the CD28-based human CSRs incorporate a TM domain derived from CD28 [28, 43–46], we noticed in the present case that the TM of the original exodomain, i.e. TIGIT was more advantageous than that of CD28 (Figs. 1 and 2). This observation strengthens the need to evaluate CSR design empirically similarly to CARs [47]. Though we describe a CD28-based CSR prototype in this work, it is conceivable that the use of alternative/additional costimulatory endodomain (such as 41BB, ICOS, CD27 or OX40) to design 1st or 2nd generation CSR with poly-functionality, especially as we have showed in the past that additional co-stimulation is beneficial in the context of TCR gene transfer [25].



Moreover, since simultaneous blockade of TIGIT and PD-1 could enhance cytokine production, proliferation and degranulation in CD8<sup>+</sup> TILs from melanoma patients, one could surmise that the combination of multiple CSRs based on TIGIT and PD1, each with different signaling moieties may act synergistically [19]. As relative levels of ligands, nature and affinity of the interaction, expression levels of the different chimeras can further influence T-cell function, it is nevertheless difficult to directly compare the function of PD1-28 and TIGIT-28 CSRs as they bind to different ligands (PDL1 and CD155 respectively) on the target cells. Conversely, TIGIT has been showed to bind to other ligands besides CD155, such as CD112 or CD113 (with lower affinity though) and thus, we might infer that TIGIT/28 may also be biologically functional when binding to these alternative ligands. Additionally, as TIGIT is also naturally expressed by NK cells, one may envisage that TIGIT-based CSR may improve their function, using either CD28 or perhaps a different signaling moiety such as from the DAP family [48].

T-cell antigen specificity may be redirected using either TCRs or CARs [24]. While one of the advantages of

CARs is the incorporation a co-stimulatory moiety, these receptors are limited to membrane antigen targets. Alternatively, TCR can target also intracellular antigen but lack built-in co-stimulatory domains [49]. Thus, a major advantage of CSR lies with the possibility to selectively combine costimulatory signals in the context of TCR stimulation. Interestingly, we show that CSRs can be beneficial when being engaged concomitantly not only with medium-affinity but also with high-affinity TCR (e.g., using the F5 TCR, Fig. 4), though with the latter, we observed a lower enhancement of cytokine secretion (we measured an average enhancement in cytokine secretion of  $162\% \pm 27\%$  in co-cultures with T-cells expressing F4 TCR compared to  $48\% \pm 13\%$  with F5 TCR;  $p = 0.0042$ , compared using a paired *Student's t*-test). Of importance, this superior function was also independent of the type of subpopulation both in CD8<sup>+</sup> and CD4<sup>+</sup> T cell populations (Fig. 4c-d) or of the type of antigen-targeting receptor employed; indeed, we also showed that the function of aCD19-BBz CAR could be enhanced when co-expressing TIGIT-28 (Fig. 5). In sum, these results underline the versatility of the CSR approach.

The ubiquitous nature of CD155 expression on different tumors makes TIGIT-28 a valuable switch receptor to be used in conjunction with receptors targeting tumor antigens widely expressed such as NYESO or p53 [24, 50]. Also, it was shown that TIGIT is upregulated by T-cells in chronic viral infections [13, 14]. Thus, it is possible that anti-viral strategies based on engineered T-cells may derive benefit from the use of TIGIT-28.

An additional advantage to the present strategy, when compared to antibodies/checkpoint inhibitors, lies with the permanent nature of this modification and with the fact that it provides engineered T-cells with the opportunity to activate costimulatory pathways; the latter could facilitate T-cell persistence over time, proliferation, differentiation into memory cells and improved performance in patients. It is also reasonable to conjecture that tumors may escape from an immune response and be selected over *time* in vivo based on their high levels of inhibitory ligands (in our case CD155) [12, 15, 17, 24]. However, when using CSRs, overexpression of inhibitory ligands by tumors may actually be detrimental to the latter and thus, this could alternatively lead to a decrease in immunosuppression and ultimately, to a broader T-cell anti-tumor response.

## Conclusion

In conclusion, we have demonstrated the efficacy of signal conversion by a novel CSR, namely the TIGIT-28 chimeric receptor that can work in concert with a TCR or CAR. TIGIT-28 can improve the anti-tumor activity of engineered T-cells in an antigen dependent setting leading to tumor regression. We are confident that this approach geared at the manipulation of costimulatory pathways bears important implications for the enhancement of T cell-based treatments using gene-transfer approaches.

## Additional files

**Additional file 1: Figure S1.** Correlation between ligand expression and chimera function. **Figure S2.** TCR expression levels following hypofunction induction. (PPTX 76 kb)

## Acknowledgements

We thank Ms. Riki Sabbag for her technical help in executing in vivo experiments work and Dr. Jennifer Benichou Israel Cohen, head of the statistical unit in the Faculty of Life Sciences, Bar-Ilan University for her advice on statistical data processing and presentation.

## Authors' contributions

SH performed the experiments, analyzed the data, wrote the manuscript and prepared the figures. VE performed experiments, analyzed the data, wrote the manuscript and prepared the figures. SM performed the experiments, analyzed the data. AS performed the experiments. TB provided assistance with experiments and data analysis, CJC designed experiments, analyzed data and wrote the manuscript. All authors read and approved the final manuscript.

## Funding

This work was supported by the Israel Science Foundation (1422/15).

## Availability of data and materials

n/a

## Ethics approval and consent to participate

All the procedures were performed according to the guidelines of the Bar-Ilan university committee for animal welfare and the Israel Ministry of Health.

## Consent for publication

n/a

## Competing interests

The authors declare that they have no competing interests.

Received: 1 March 2019 Accepted: 28 August 2019

Published online: 09 September 2019

## References

- Sharpe AH. Introduction to checkpoint inhibitors and cancer immunotherapy. *Immunol Rev.* 2017;276:5–8.
- Anderson AC, Joller N, Kuchroo VK. Lag-3, Tim-3, and TIGIT: co-inhibitory receptors with specialized functions in immune regulation. *Immunity.* 2016;44:989–1004.
- Yu X, Harden K, Gonzalez LC, Francesco M, Chiang E, Irving B, et al. The surface protein TIGIT suppresses T cell activation by promoting the generation of mature immunoregulatory dendritic cells. *Nat Immunol.* 2009;10:48–57.
- Manieri NA, Chiang EY, Grogan JL. TIGIT: a key inhibitor of the Cancer immunity cycle. *Trends Immunol.* 2017;38:20–8.
- Joller N, Lozano E, Burkett PR, Patel B, Xiao S, Zhu C, et al. Treg cells expressing the coinhibitory molecule TIGIT selectively inhibit proinflammatory Th1 and Th17 cell responses. *Immunity.* 2014;40:569–81.
- Kurtulus S, Sakuishi K, Ngoiow SF, Joller N, Tan DJ, Teng MW, et al. TIGIT predominantly regulates the immune response via regulatory T cells. *J Clin Invest.* 2015;125:4053–62.
- Fuhrman CA, Yeh WJ, Seay HR, Saikumar LP, Chopra G, Zhang L, et al. Divergent phenotypes of human regulatory T cells expressing the receptors TIGIT and CD226. *J Immunol.* 2015;195:145–55.
- Bottino C, Castriconi R, Pende D, Rivera P, Nanni M, Carnemolla B, et al. Identification of PVR (CD155) and Nectin-2 (CD112) as cell surface ligands for the human DNAM-1 (CD226) activating molecule. *J Exp Med.* 2003;198:557–67.
- Lozano E, Dominguez-Villar M, Kuchroo V, Hafler DA. The TIGIT/CD226 axis regulates human T cell function. *J Immunol.* 2012;188:3869–75.
- Dougall WC, Kurtulus S, Smyth MJ, Anderson AC. TIGIT and CD96: new checkpoint receptor targets for cancer immunotherapy. *Immunol Rev.* 2017;276:112–20.
- Liu XG, Hou M, Liu Y. TIGIT, A Novel therapeutic target for tumor immunotherapy. *Immunol Investig.* 2017;46:172–82.
- He W, Zhang H, Han F, Chen X, Lin R, Wang W, et al. CD155/TIGIT signaling regulates CD8(+) T-cell metabolism and promotes tumor progression in human gastric Cancer. *Cancer Res.* 2017;77:6375–88.
- Bowers JR, Readler JM, Sharma P, Excoffon KJDA. Poliovirus receptor: more than a simple viral receptor. *Virus Res.* 2017;242:1–6.
- Johnston RJ, Comps-Agrar L, Hackney J, Yu X, Huseni M, Yang Y, et al. The immunoreceptor TIGIT regulates antitumor and antiviral CD8(+) T cell effector function. *Cancer Cell.* 2014;26:923–37.
- Bevelacqua V, Bevelacqua Y, Candido S, Skarmoutsou E, Amoroso A, Guarneri C, et al. Nectin like-5 overexpression correlates with the malignant phenotype in cutaneous melanoma. *Oncotarget.* 2012;3:882–92.
- Mahnke K, Enk AH. TIGIT-CD155 interactions in melanoma: a novel co-inhibitory pathway with potential for clinical intervention. *J Invest Dermatol.* 2016;136:9–11.
- Gao J, Zheng Q, Xin N, Wang W, Zhao C. CD155, an onco-immunologic molecule in human tumors. *Cancer Sci.* 2017;108:1934–8.
- Inozume T, Yaguchi T, Furuta J, Harada K, Kawakami Y, Shimada S. Melanoma cells control anti-melanoma CTL responses via interaction between TIGIT and CD155 in the effector phase. *J Invest Dermatol.* 2016;136:255–63.



19. Chauvin JM, Pagliano O, Fourcade J, Sun Z, Wang H, Sander C, et al. TIGIT and PD-1 impair tumor antigen-specific CD8(+) T cells in melanoma patients. *J Clin Invest*. 2015;125:2046–58.
20. Guillerey C, Harjunpaa H, Carrie N, Kassem S, Teo T, Miles K, et al. TIGIT immune checkpoint blockade restores CD8(+) T-cell immunity against multiple myeloma. *Blood*. 2018;132:1689–94.
21. Stanitsky N, Simic H, Arapovic J, Toporik A, Levy O, Novik A, et al. The interaction of TIGIT with PVR and PVRL2 inhibits human NK cell cytotoxicity. *Proc Natl Acad Sci U S A*. 2009;106:17858–63.
22. Levin SD, Taft DW, Brandt CS, Bucher C, Howard ED, Chadwick EM, et al. Vstm3 is a member of the CD28 family and an important modulator of T-cell function. *Eur J Immunol*. 2011;41:902–15.
23. Catakovic K, Klieser E, Neureiter D, Geisberger R. T cell exhaustion: from pathophysiological basics to tumor immunotherapy. *Cell Commun Signal*. 2017;15:1.
24. Eisenberg V, Hoogi S, Shamul A, Barliya T, Cohen CJ. T-cells "à la CAR-T(e)" - Genetically engineering T-cell response against cancer. *Adv Drug Deliv Rev*. 2019;141:23–40. <https://doi.org/10.1016/j.addr.2019.01.007>. Epub 2019 Jan 14. Review. PMID: 30653988.
25. Daniel-Meshulam I, Horovitz-Fried M, Cohen CJ. Enhanced antitumor activity mediated by human 4-1BB-engineered T cells. *Int J Cancer*. 2013;133:2903–13.
26. Topp MS, Riddell SR, Akatsuka Y, Jensen MC, Blattman JN, Greenberg PD. Restoration of CD28 expression in CD28- CD8+ memory effector T cells reconstitutes antigen-induced IL-2 production. *J Exp Med*. 2003;198:947–55.
27. Tay JC, Zha S, Wang S. Chimeric switch receptor: switching for improved adoptive T-cell therapy against cancers. *Immunotherapy*. 2017;9:1339–49.
28. Ankrì C, Shamalov K, Horovitz-Fried M, Mauer S, Cohen CJ. Human T cells engineered to express a programmed death 1/28 costimulatory retargeting molecule display enhanced antitumor activity. *J Immunol*. 2013;191:4121–9.
29. Liu X, Ranganathan R, Jiang S, Fang C, Sun J, Kim S, et al. A chimeric switch-receptor targeting PD1 augments the efficacy of second-generation CAR T cells in advanced solid tumors. *Cancer Res*. 2016;76:1578–90.
30. Haga-Friedman A, Horovitz-Fried M, Cohen CJ. Incorporation of transmembrane hydrophobic mutations in the TCR enhance its surface expression and T cell functional avidity. *J Immunol*. 2012;188:5338–46.
31. Eisenberg V, Shamalov K, Meir S, Hoogi S, Sarkar R, Pinker S, et al. Targeting multiple tumors using T-cells engineered to express a natural cytotoxicity receptor 2-based chimeric receptor. *Front Immunol*. 2017;8:1212.
32. Morgan RA, Dudley ME, Wunderlich JR, Hughes MS, Yang JC, Sherry RM, et al. Cancer regression in patients after transfer of genetically engineered lymphocytes. *Science*. 2006;314:126–9.
33. Catakovic K, Gassner FJ, Ratswohl C, Zaborsky N, Rebhandl S, Schubert M, et al. TIGIT expressing CD4+T cells represent a tumor-supportive T cell subset in chronic lymphocytic leukemia. *Oncoimmunology*. 2017;7:e1371399.
34. Wilde S, Sommermeyer D, Leisegang M, Frankenberger B, Mosetter B, Uckert W, et al. Human antitumor CD8+ T cells producing Th1 polycytokines show superior antigen sensitivity and tumor recognition. *J Immunol*. 2012;189:598–605.
35. Das L, Levine AD. TGF-beta inhibits IL-2 production and promotes cell cycle arrest in TCR-activated effector/memory T cells in the presence of sustained TCR signal transduction. *J Immunol*. 2008;180:1490–8.
36. Koehler H, Kofler D, Hombach A, Abken H. CD28 costimulation overcomes transforming growth factor-beta-mediated repression of proliferation of redirected human CD4+ and CD8+ T cells in an antitumor cell attack. *Cancer Res*. 2007;67:2265–73.
37. Boise LH, Minn AJ, Noel PJ, June CH, Accavitti MA, Lindsten T, et al. CD28 costimulation can promote T cell survival by enhancing the expression of Bcl-XL. *Immunity*. 1995;3:87–98.
38. Esensten JH, Helou YA, Chopra G, Weiss A, Bluestone JA. CD28 Costimulation: from mechanism to therapy. *Immunity*. 2016;44:973–88.
39. Johnson LA, Heemskerck B, Powell DJ Jr, Cohen CJ, Morgan RA, Dudley ME, et al. Gene transfer of tumor-reactive TCR confers both high avidity and tumor reactivity to nonreactive peripheral blood mononuclear cells and tumor-infiltrating lymphocytes. *J Immunol*. 2006;177:6548–59.
40. Hebeisen M, Allard M, Gannon PO, Schmidt J, Speiser DE, Ruffer N. Identifying individual T cell receptors of optimal avidity for tumor antigens. *Front Immunol*. 2015;6:582.
41. Curti BD, Kovacovics-Bankowski M, Morris N, Walker E, Chisholm L, Floyd K, et al. OX40 is a potent immune-stimulating target in late-stage cancer patients. *Cancer Res*. 2013;73:7189–98.
42. Kamphorst AO, Wieland A, Nasti T, Yang S, Zhang R, Barber DL, et al. Rescue of exhausted CD8 T cells by PD-1-targeted therapies is CD28-dependent. *Science*. 2017;355:1423–7.
43. Moon EK, Wang LC, Dolfi DV, Wilson CB, Ranganathan R, Sun J, et al. Multifactorial T-cell hypofunction that is reversible can limit the efficacy of chimeric antigen receptor-transduced human T cells in solid tumors. *Clin Cancer Res*. 2014;20:4262–73.
44. Schlenker R, Olguin-Contreras LF, Leisegang M, Schnappinger J, Disovic A, Ruhland S, et al. Chimeric PD-1:28 receptor upgrades low-avidity T cells and restores effector function of tumor-infiltrating lymphocytes for adoptive cell therapy. *Cancer Res*. 2017;77:3577–90.
45. Oda SK, Daman AW, Garcia NM, Wagener F, Schmitt TM, Tan X, et al. A CD200R-CD28 fusion protein appropriates an inhibitory signal to enhance T-cell function and therapy of murine leukemia. *Blood*. 2017;130:2410–9.
46. Feldhaus AL, Evans L, Sutherland RA, Jones LA. A CD2/CD28 chimeric receptor triggers the CD28 signaling pathway in CTL2 cells. *Gene Ther*. 1997;4:833–8.
47. Sadelain M, Brentjens R, Riviere I. The basic principles of chimeric antigen receptor design. *Cancer Discov*. 2013;3:388–98.
48. Topfer K, Cartellieri M, Michen S, Wiedemuth R, Muller N, Lindemann D, et al. DAP12-based activating chimeric antigen receptor for NK cell tumor immunotherapy. *J Immunol*. 2015;194:3201–12.
49. Walseng E, Koksall H, Sektioglu IM, Fane A, Skorstad G, Kvalheim G, et al. A TCR-based chimeric antigen receptor. *Sci Rep*. 2017;7:10713.
50. Shamalov K, Levy SN, Horovitz-Fried M, Cohen CJ. The mutational status of p53 can influence its recognition by human T-cells. *Oncoimmunology*. 2017;6:e1285990.

## Publisher's Note

Springer Nature remains neutral with regard to jurisdictional claims in published maps and institutional affiliations.

**Ready to submit your research? Choose BMC and benefit from:**

- fast, convenient online submission
- thorough peer review by experienced researchers in your field
- rapid publication on acceptance
- support for research data, including large and complex data types
- gold Open Access which fosters wider collaboration and increased citations
- maximum visibility for your research: over 100M website views per year

**At BMC, research is always in progress.**

Learn more [biomedcentral.com/submissions](https://biomedcentral.com/submissions)

