

PREDICTIONS OF OUTCOMES AND BENEFIT OF IMMUNE CHECKPOINT INHIBITOR TREATMENT IN NSCLC REQUIRE INFORMATION ON BOTH TUMOR AND HOST BIOLOGY

¹Joanna Roder*, ¹Thomas Campbell, ¹Senait Asmellash, ¹Steven Rightmyer, ¹Patrick Norman, ¹Robert Georgantas, ²Mark McClelland, ³Wei Zou, ⁴Minu Srivastava, ¹Lelia Net, ¹Laura Maguire, ¹Heinrich Roder, ³David Shames. ¹Biosesix, Boulder, CO, USA; ²Former employee of Genentech, South San Francisco, CA, USA; ³Genentech, South San Francisco, CA, USA

Background Immunotherapy has become a key element in the arsenal of treatments for advanced non-small cell lung cancer (NSCLC). The anti-PD-L1 Response Test (ART), based on mass spectrometry of pretreatment serum, captures the effect of host biology on outcomes after atezolizumab (A) therapy. It stratified outcomes on A and was predictive of benefit of A over docetaxel (D) in a blinded, retrospective study of 2nd and 3rd line NSCLC patients in the POPLAR Ph2 clinical study.¹ Our current work applies the test to the larger OAK NSCLC Ph3 clinical study² to investigate the interplay between tumor PD-L1 expression and ART classifications in predicting outcomes and benefit from A therapy.

Methods Pretreatment serum samples from 823 of the 850 patients in the OAK study (NCT02008227) were analyzed with ART blinded to all clinical data. The ART assigns a result of Good or Poor corresponding to better or worse outcomes on A. Association of test classification with overall survival (OS) within and between treatment arms was investigated using Cox proportion hazards models overall and within PD-L1 subgroups defined by SP142 assay.³

Results Test classifications were generated for 786 (96%) samples; the remaining samples failed test QC, mainly due to hemolysis. A Good classification was assigned to 359 (46%) samples and a Poor classification to 427 (54%) samples. Overall, OS was better for the Good subgroup than the Poor subgroup within both arms, arm A (hazard ratio (HR)=0.52 (95% Confidence Interval (CI): 0.41–0.66)) and arm D (HR=0.54 (CI:0.43–0.68)). The test was not predictive of benefit of A over D, but was prognostic for both A and D. Patients classified as Good had better outcomes than those classified as Poor in both treatment arms for all PD-L1 subgroups investigated (figure 1). Benefit of A vs D was found in both test classification groups for PD-L1 positive patients (table 1).

Conclusions Information on both tumor and host are essential to predict outcomes of immunotherapy and chemotherapy in NSCLC patients.

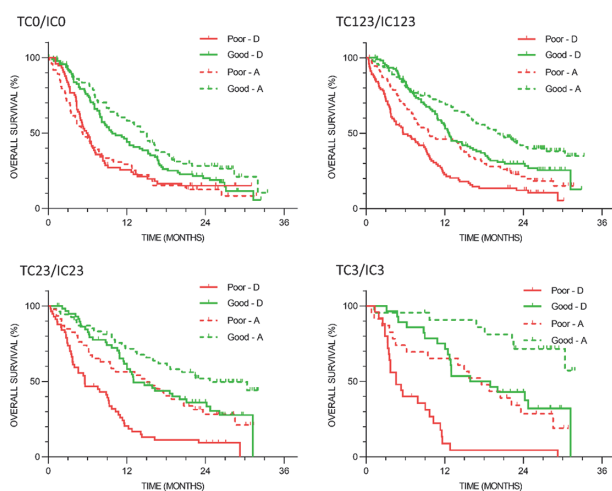
Trial Registration ClinicalTrials.gov NCT02008227

REFERENCES

1. Kowanetz M, Leng N, Roder J, et al. Evaluation of immune-related markers in the circulating proteomic and their association with atezolizumab efficacy in patients with 2L+ NSCLC. *J Immunother Cancer* 2018;**6**(Suppl1):114.
2. Rittmeyer A, Barlesi F, Waterkamp D, et al. Atezolizumab versus docetaxel in patients with previously treated non-small-cell lung cancer (OAK): a phase 3, open-label, multicenter randomized controlled trial. *Lancet* 2017;**389**(10066):255–265.
3. Herbst R, Giaccone G, de Marinis F, et al. Atezolizumab for first-line treatment of PD-L1-selected patients with NSCLC. *N Engl J Med* 2020;**383**:1328–1339.

Ethics Approval The OAK study (NCT02008227) was done in 194 academic medical centres and community oncology practices across 31 countries worldwide. The study was done in full accordance with the guidelines for Good Clinical Practice and the Declaration of Helsinki. All patients gave written informed consent.

<http://dx.doi.org/10.1136/jitc-2021-SITC2021.028>



Abstract 28 Figure 1 Kaplan-Meier plots of OS by test classification, Good and Poor, and treatment arm, A and D, within PD-L1 subgroups

Abstract 28 Table 1 Hazard ratios between A and D by test classification group and PD-L1 subgroup

PD-L1 subgroup	Poor Classification Subgroup HR (CI)	Good Classification Subgroup HR (CI)
TC=0 and IC=0	1.12 (0.79-1.59)	0.74 (0.53-1.04)
TC=1/2/3 or IC=1/2/3	0.63 (0.46-0.85)	0.67 (0.49-0.93)
TC=2/3 or IC=2/3	0.46 (0.30-0.73)	0.57 (0.35-0.94)
TC=3 or IC=3	0.31 (0.16-0.62)	0.30 (0.12-0.72)