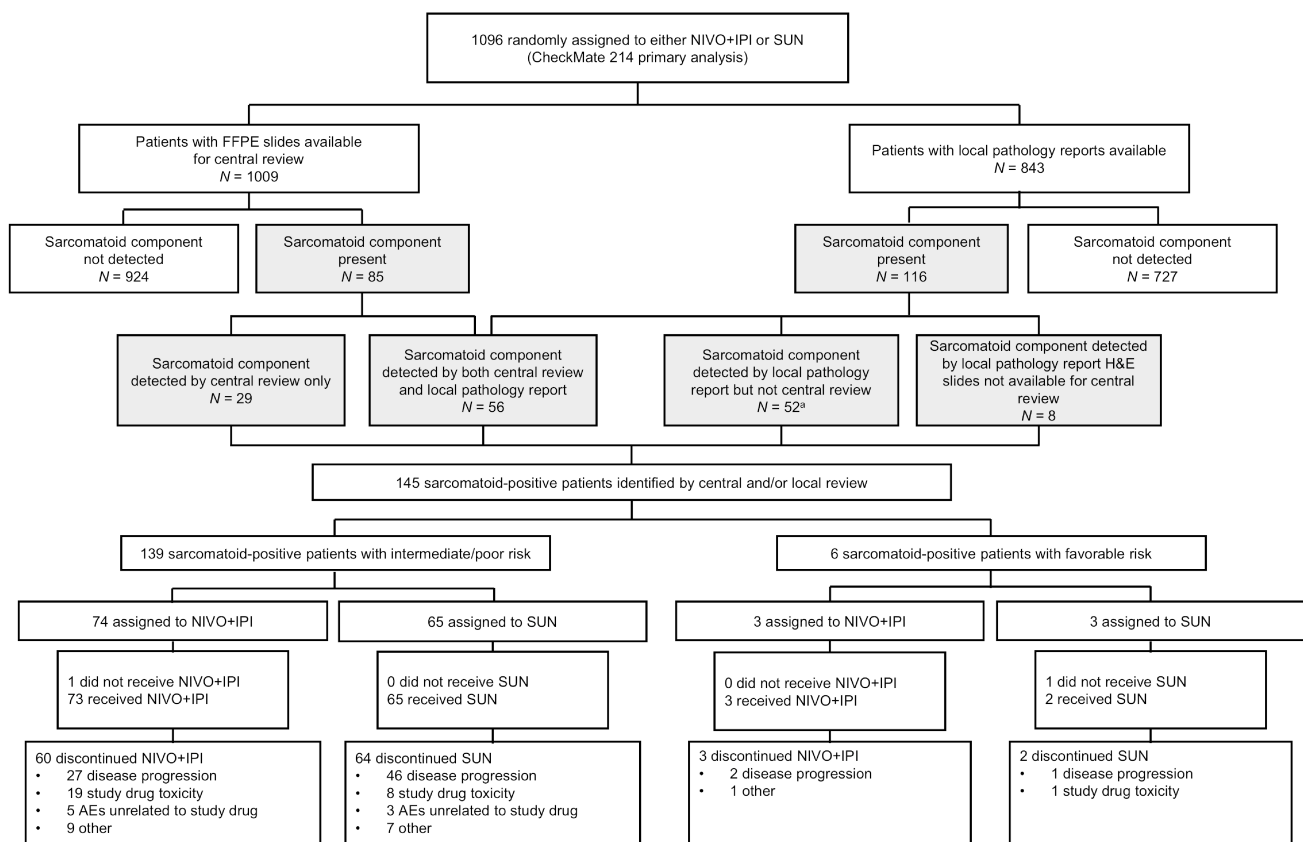


Figure S1. Post hoc identification of sarcomatoid patients in CheckMate 214

A diagnosis of sarcomatoid-positive renal cell carcinoma was made if any proportion of sarcomatoid component was present. Gray shaded boxes denote patient samples identified as sarcomatoid-positive and included in the present analysis.

^aIncludes four patients with N/A results.

AE, adverse event; H&E, hematoxylin and eosin; NIVO+IPI, nivolumab plus ipilimumab; SUN, sunitinib.