

SUPPLEMENTARY MATERIAL

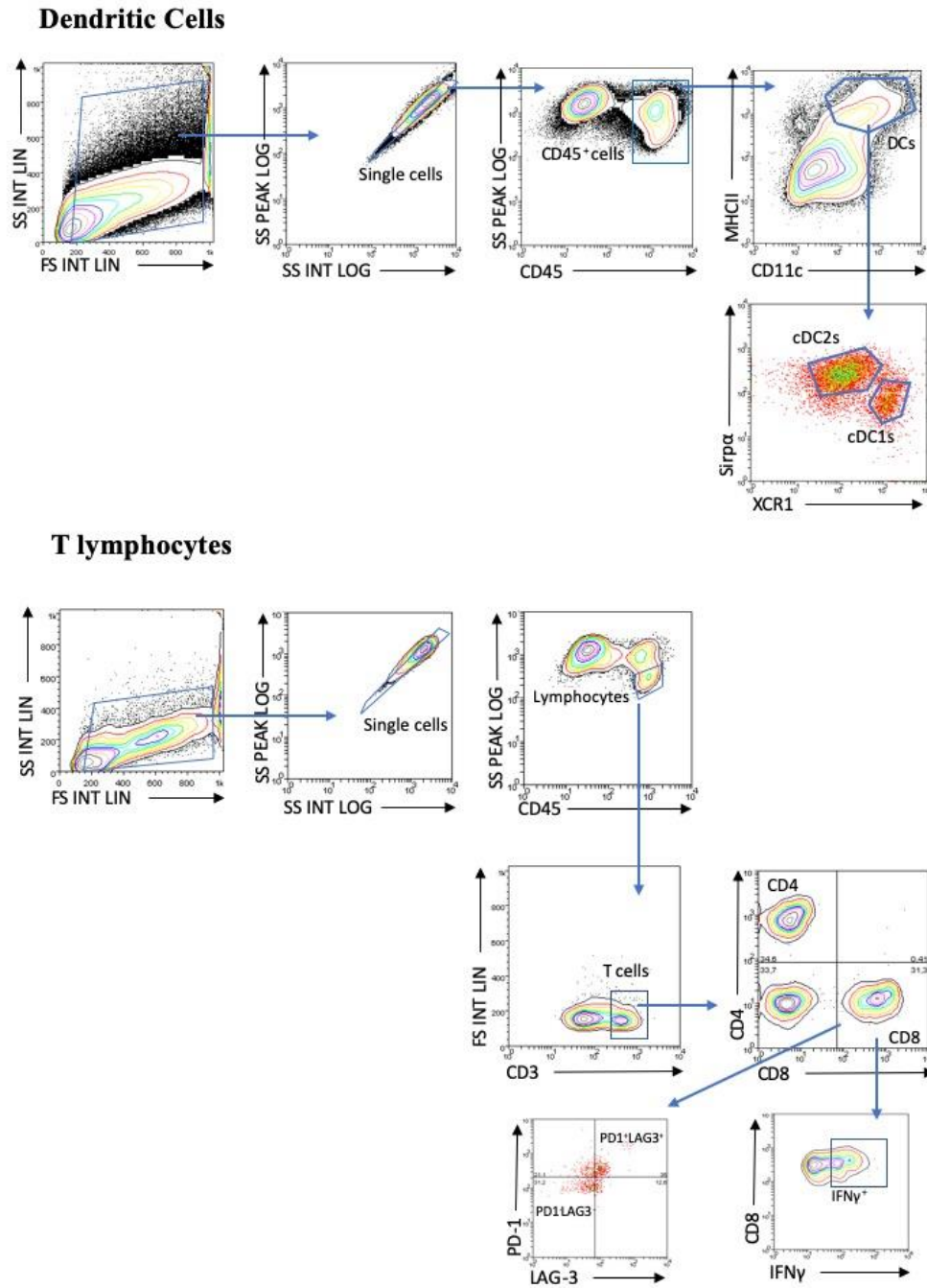


Fig S1. Bladder tumor gating strategy

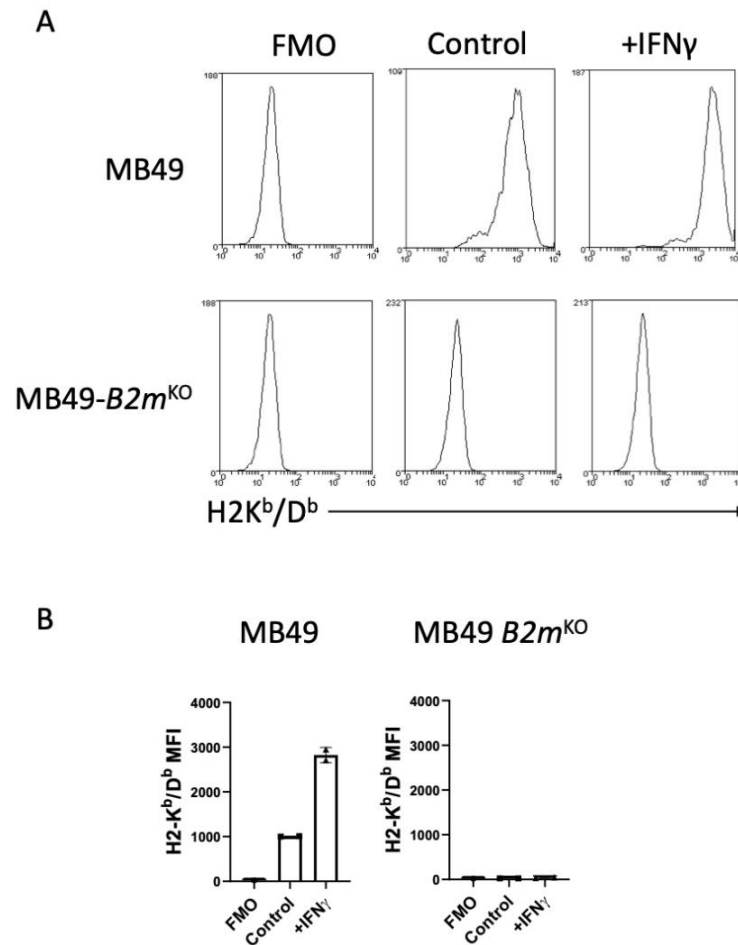


Fig S2. Characterization of MB49-B2mKO cells. (A) Representative histograms of H2Kb/Db expression on MB49 and MB49-B2mKO cells incubated for 24h with medium alone (control) or 50 ng ml⁻¹ IFN γ . (B) Quantification of the mean fluorescence intensity (MFI) of H2Kb/Db in MB49 and MB49-B2mKO cells.

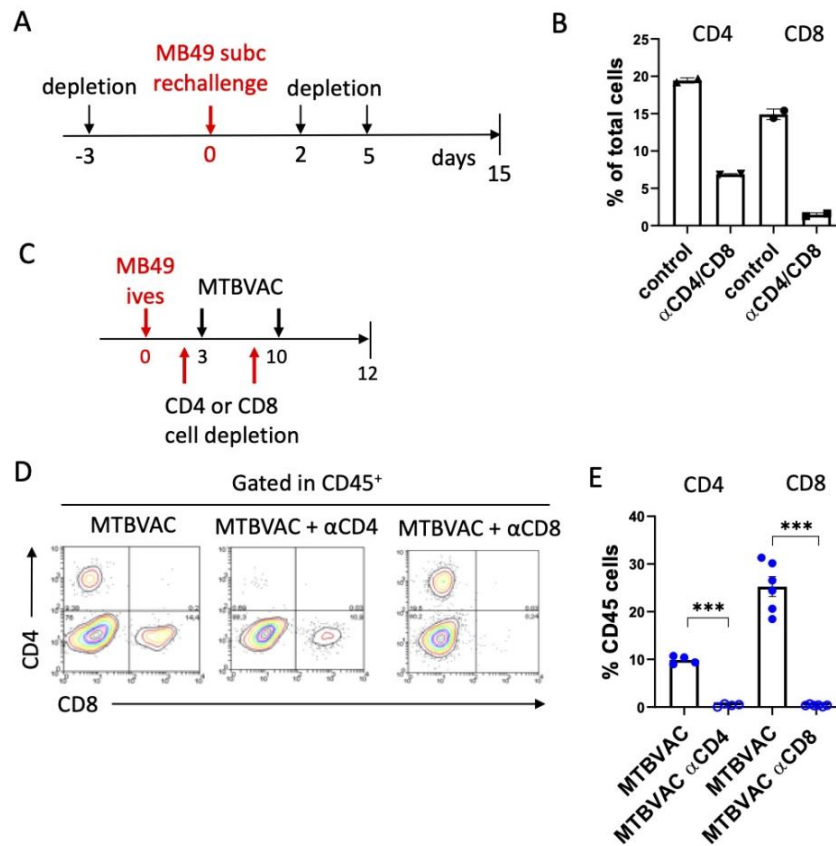


Fig S3. Antibody-based depletions. (A) Schedule of CD4 and CD8 depletion in the MB49 subcutaneous rechallenge experiments. When animals reached the predefined endpoint due to tumor burden, they were sacrificed and in two representative mice from each group, depletion efficiency was verified in the spleen. (B) Quantification of CD4 and CD8 T cells in the spleens of mice treated as in (A) $n = 2$ mice per group. (C) Schedule of CD4 or CD8 T cell depletion during intravesical MTBVAC therapy. (D) Flow cytometry density plots of T lymphocytes isolated from bladder tumors 12 days after MB49 cell implantation. Mice were treated intravesically with MTBVAC and were given α CD4 or α CD8 depleting antibodies twice. (E) Quantification of data from A, showing CD4 and CD8 T cell frequency in the CD45⁺ compartment. Graphs represent mean \pm SEM. *** $P < 0.001$, unpaired t test.