

## Supplemental Figure Legends

**Supplemental Figure 1:** (A) Maximum tumor diameter measured at the time of IRE or sham placebo surgery. PBS/Sham  $n = 13$ , IRE  $n = 14$ ,  $\beta$ -glucan/Sham  $n = 13$ , and  $\beta$ -glucan + IRE  $n = 17$ , respectively. (B) Quantified mRNA expression of TNF- $\alpha$ , IL-1 $\beta$ , iNOS, IL-12p35, TGF- $\beta$ , IL-10, HK-1, and CCL2 in CD11b $^{+}$  cells measured by RT-PCR. PBS  $n=5$ , IRE  $n=5$ ,  $\beta$ -glucan  $n=5$ ,  $\beta$ -glucan + IRE  $n=5$ , respectively. Data are presented as mean  $\pm$  SEM. Significance: ns= not significant;  $*p < 0.05$ ,  $**p < 0.01$ ,  $***p < 0.001$ .

**Supplemental Figure 2:** (A) Myeloid cell gating strategy. (B) Frequency of CD45 $^{+}$  leucocytes, CD11b $^{+}$  myeloid cells, CD11b $^{+}$ F4/80 $^{+}$  macrophages, CD11b $^{+}$ Ly6G $^{+}$ Ly6C $^{+}$  monocytes, and CD11b $^{+}$ Ly6G $^{+}$ Ly6C $^{+}$  neutrophils within KPC tumors treated by PBS,  $\beta$ -glucan, IRE, or  $\beta$ -glucan + IRE.  $n = 5$  per group. Data are presented as mean  $\pm$  SEM. Significance: ns= not significant;  $**p < 0.01$ .

**Supplemental Figure 3:** (A) Representative flow contour plots of Ly6C $^{+}$ TNF- $\alpha$  $^{+}$  cells late in disease progression from KPC tumors within PBS,  $\beta$ -glucan, IRE, and  $\beta$ -glucan + IRE treated mice. (B) Summarized CD11b $^{+}$ Ly6C $^{+}$ TNF- $\alpha$  $^{+}$  percent and MFI. PBS  $n = 4$ , IRE  $n = 4$ ,  $\beta$ -glucan  $n = 4$ ,  $\beta$ -glucan + IRE  $n = 5$ . (C) Representative flow contour plots of CD11b $^{+}$ F4/80 $^{+}$ TNF- $\alpha$  $^{+}$  cells late in disease progression in KPC tumors from PBS,  $\beta$ -glucan, IRE, and  $\beta$ -glucan + IRE treated mice. (D) Summarized CD11b $^{+}$ F4/80 $^{+}$ TNF- $\alpha$  $^{+}$  percent and MFI. PBS  $n = 4$ , IRE  $n = 4$ ,  $\beta$ -glucan  $n = 5$ ,  $\beta$ -glucan + IRE  $n = 5$ . Data are presented as mean  $\pm$  SEM. Significance: ns= not significant

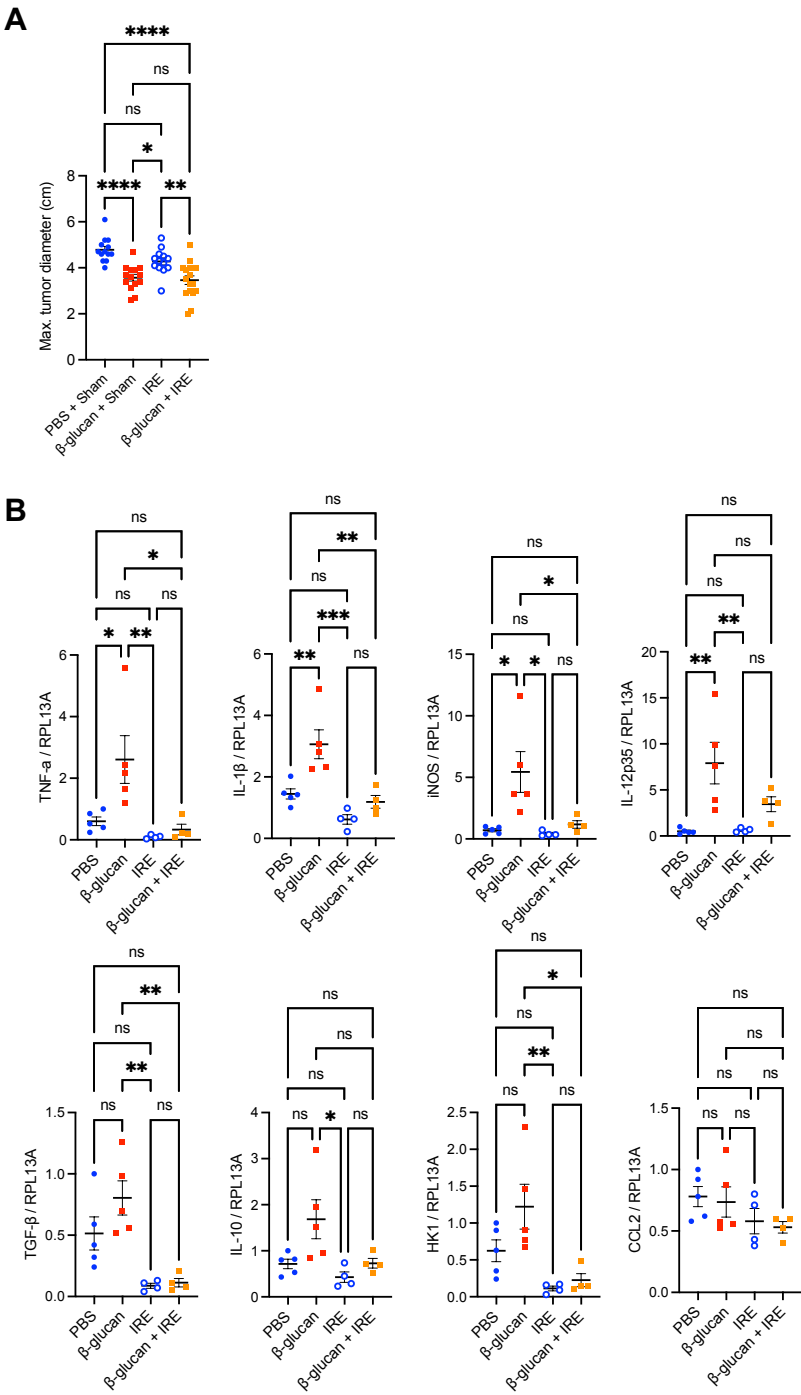
**Supplemental Figure 4:** (A) Quantified frequency of CD69, TIM-3, and LAG-3 expression on CD8 $^{+}$  T cells within PBS,  $\beta$ -glucan, IRE, or  $\beta$ -glucan + IRE treated KPC tumors. (B) Quantified frequency of PD-1, Granzyme B, CD69, TIM-3, and LAG-4 expression on CD4 $^{+}$  T cells within each group. PBS  $n = 5$ ,  $\beta$ -glucan  $n = 5$ , IRE  $n = 4$ , and  $\beta$ -glucan + IRE  $n = 5$ , respectively. Data are presented as mean  $\pm$  SEM. Significance: ns= not significant;  $*p < 0.05$ ,  $**p < 0.01$ .

**Supplemental Figure 5:** (A) Representative flow contour plots of CD11b $^{+}$ TNF- $\alpha$  $^{+}$  cells from the pancreas of WT mice fed PBS or increasing doses of oral  $\beta$ -glucan (0.5mg, 1mg, 2mg) daily for one week. (B) Quantified percent CD11b $^{+}$ TNF- $\alpha$  $^{+}$  cells are shown, PBS  $n=2$ , 0.5mg  $\beta$ -glucan  $n = 5$ , 1mg  $\beta$ -glucan  $n = 5$ , 2mg  $\beta$ -glucan  $n = 5$ , respectively. Data are presented as mean  $\pm$  SEM. Significance: ns= not significant;  $**p < 0.01$ ,  $***p < 0.001$ ,  $****p < 0.0001$ .

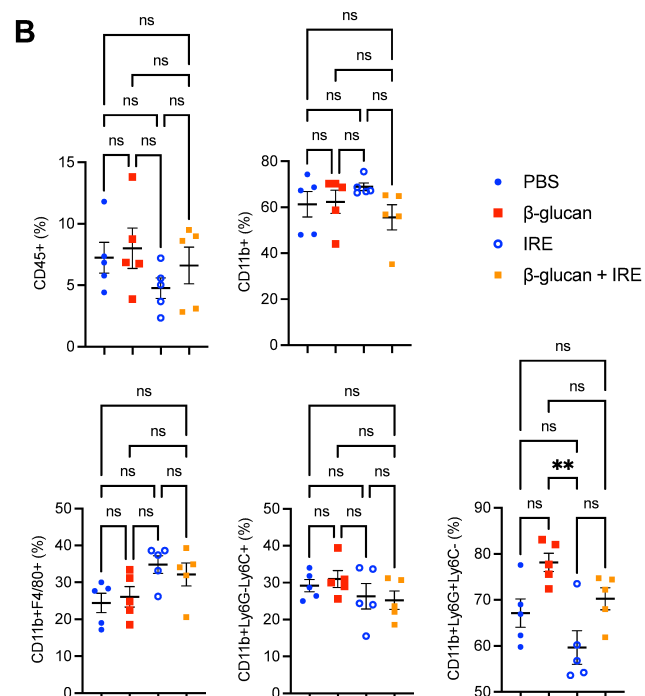
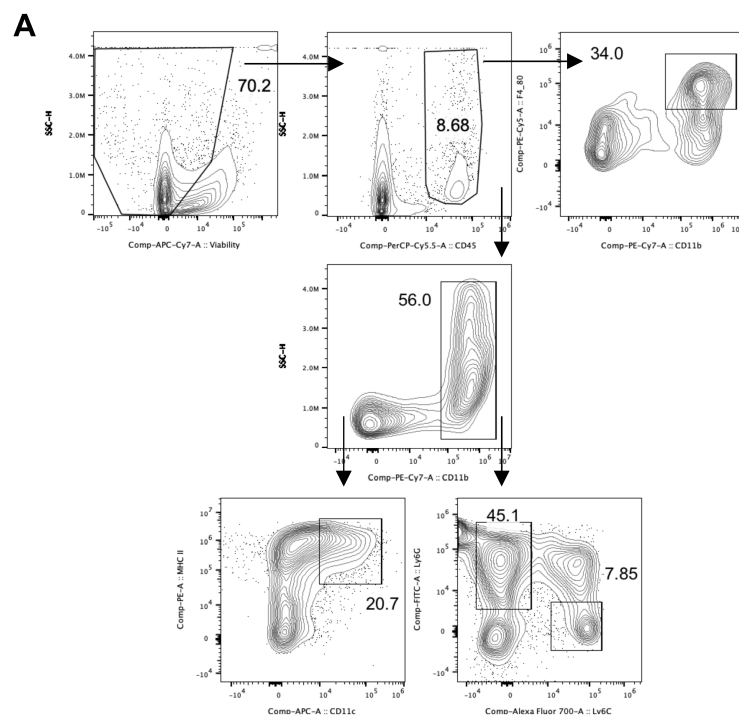
**Supplemental Figure 6:** (A) WT mice were treated with PBS, one IP  $\beta$ -glucan injection (1mg/mouse), or oral  $\beta$ -glucan (1mg/mouse/day) for 1 week. The mice were then euthanized, pancreases harvested, processed to single cell suspension, and analyzed by flow cytometry. Representative flow contour plots of CD11b $^{+}$ F4/80 $^{+}$ TNF- $\alpha$  $^{+}$  expressing cells. (B) Quantified percent and MFI of F4/80 $^{+}$ TNF- $\alpha$  $^{+}$  cells are shown. (C) Representative flow contour plots comparing CD11b $^{+}$ Ly6C $^{+}$ TNF- $\alpha$  $^{+}$  expressing cells. (D) Quantified percent and MFI of Ly6C $^{+}$ TNF- $\alpha$  $^{+}$  cells are shown. (E) Representative flow contour plots comparing CD11b $^{+}$ Ly6G $^{+}$  TNF- $\alpha$  expressing cells. (F) Quantified percent and MFI of Ly6G $^{+}$ TNF- $\alpha$  $^{+}$  cells are shown. (G) Representative flow contour plots comparing CD11b $^{+}$ CD11c $^{+}$  TNF- $\alpha$  expression. (H) Quantified percent and MFI of CD11c $^{+}$ TNF- $\alpha$  $^{+}$  cells are shown. PBS  $n = 4$ , IP  $\beta$ -glucan  $n = 5$ , and oral  $\beta$ -glucan  $n = 5$ , respectively. Data are presented as mean  $\pm$  SEM. Significance: ns= not significant;  $*p < 0.05$ ,  $**p < 0.01$ ,  $***p < 0.001$ ,  $****p < 0.0001$ .

**Supplemental Figure 7:** (A) Heatmap scaled expression of cell surface markers within each cell cluster as determined by CyTOF workflow analysis.

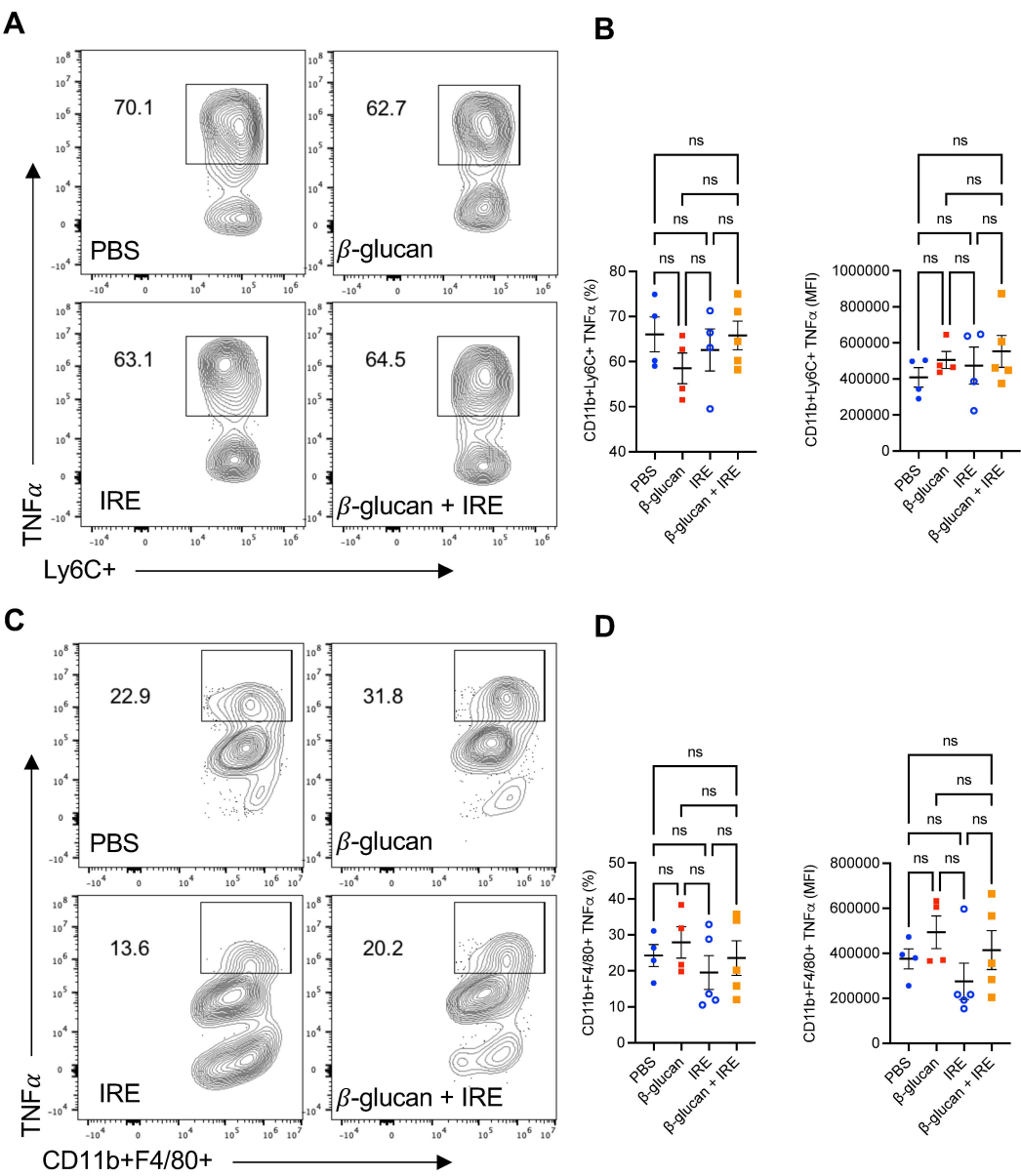
Supplemental Figure 1



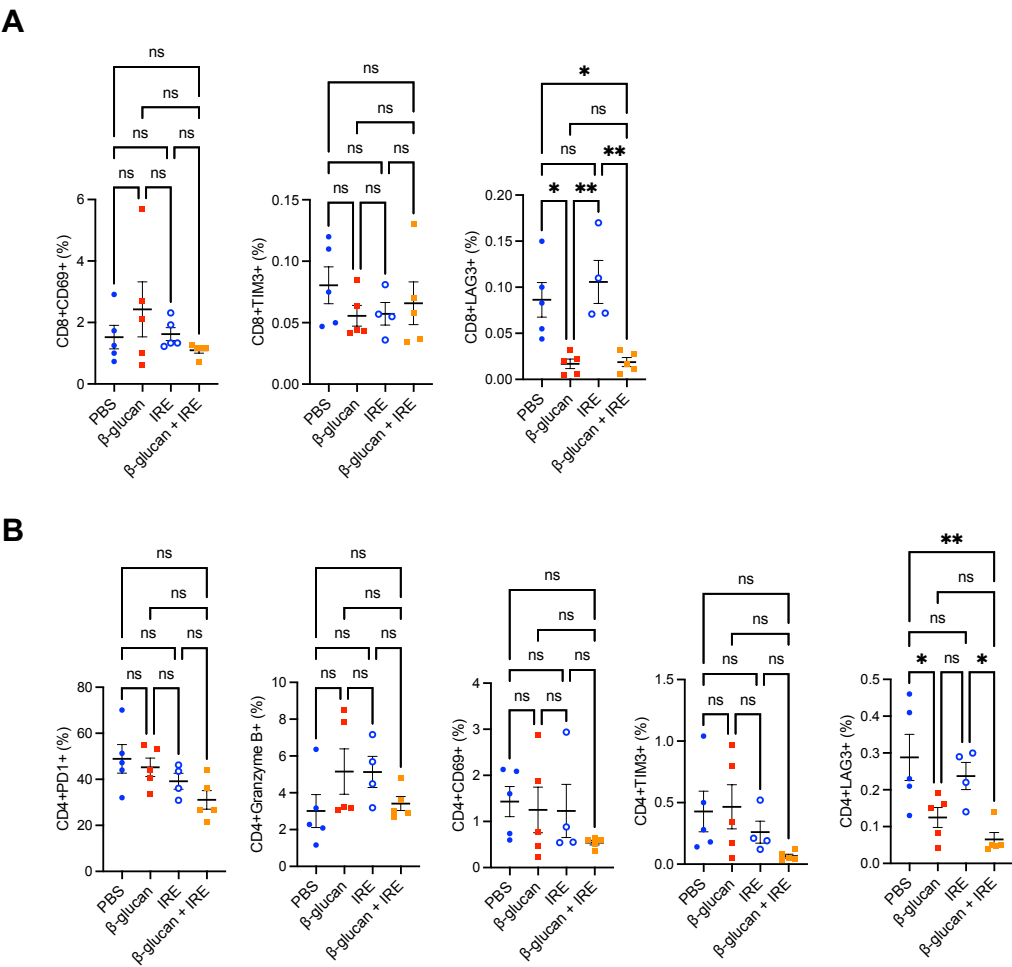
### Supplemental Figure 2



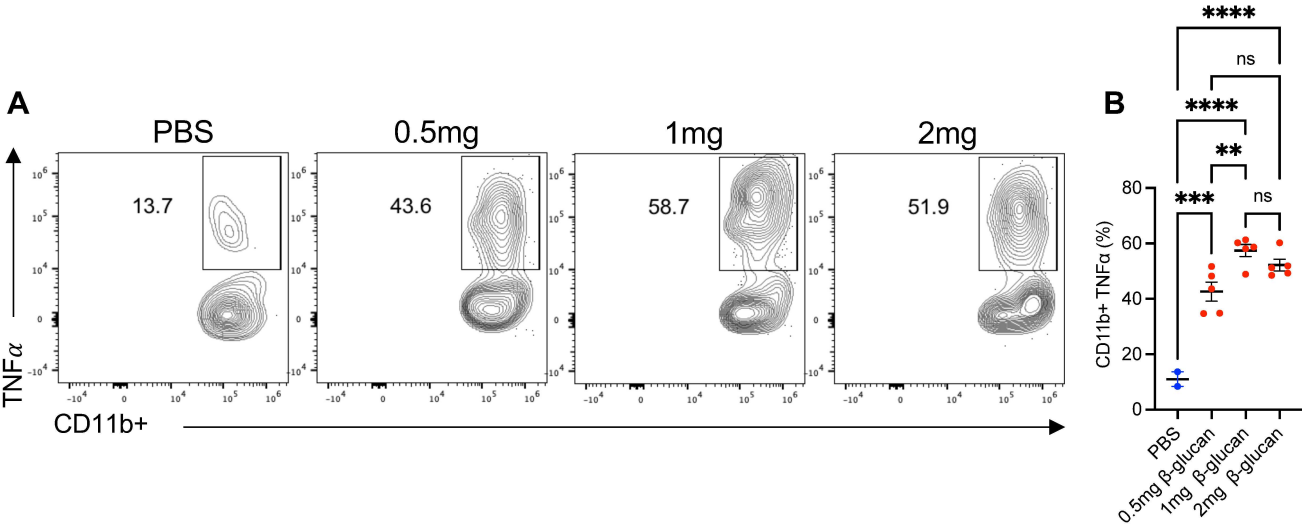
Supplemental Figure 3



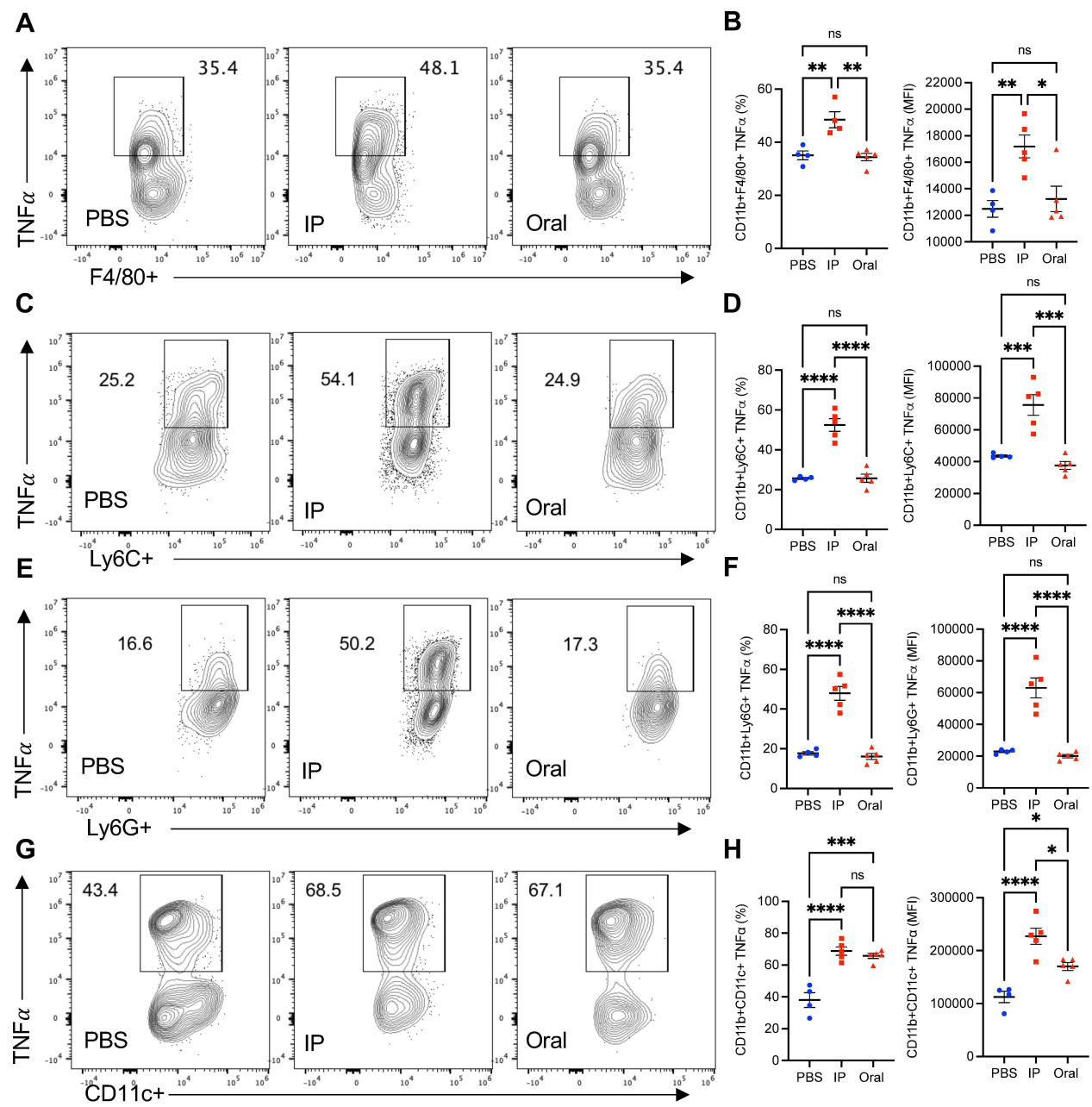
Supplemental Figure 4



Supplemental Figure 5



Supplemental Figure 6





## Supplemental Figure 7

