

Figure S2

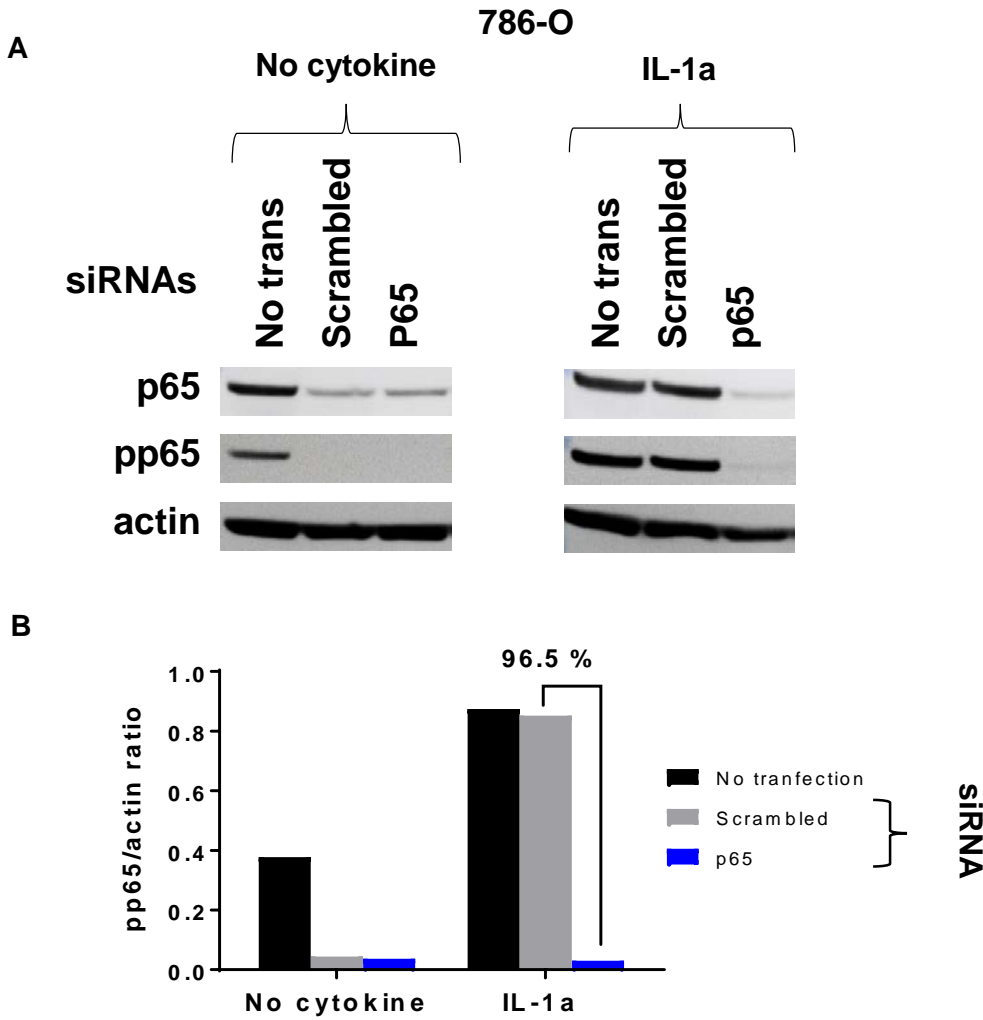


Figure S2. IL-1a-induced phosphorylation of p65 is inhibited by p65 knockdown. Cultured 786-O RCC cells were transfected with siRNA targeting p65, or non-specific scrambled siRNA, then exposed to IL-1a two days later. General and phosphorylated pp65 were detected by Western blotting 15 min after IL-1a exposure. **A.** Western blotting images show a reduction in general and phosphorylated p65 proteins with p65 knockdown. **B.** p65 knockdown reduced phosphorylated p65 by 96.5%, compared to knockdown with the scrambled siRNA control, calculated based on actin-normalized Western blot band intensity (see Methods). These data correspond to the experiment shown in Figure 4D.