

Figure S4

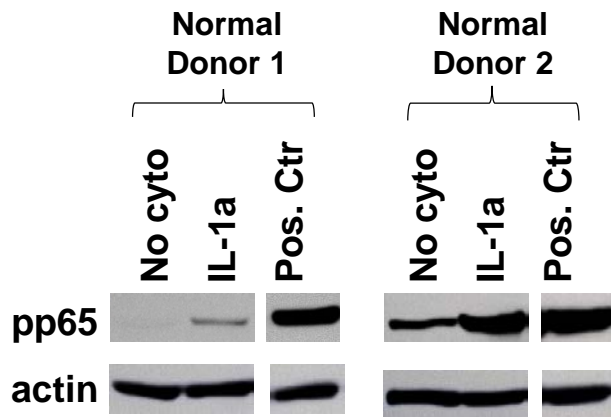


Figure S4. IL-1a induces phosphorylation of p65 in monocytes from normal donors. Freshly enriched Monos from 2 normal donors were treated with IL-1a, and phosphorylation of p65 was detected by Western blotting 15 minutes later. Cyto, cytokine; Pos. Ctr, whole protein lysate from untreated HeLa cells as a positive control for phosphorylated p65 (pp65). Beta-actin was detected as a control for protein loading.