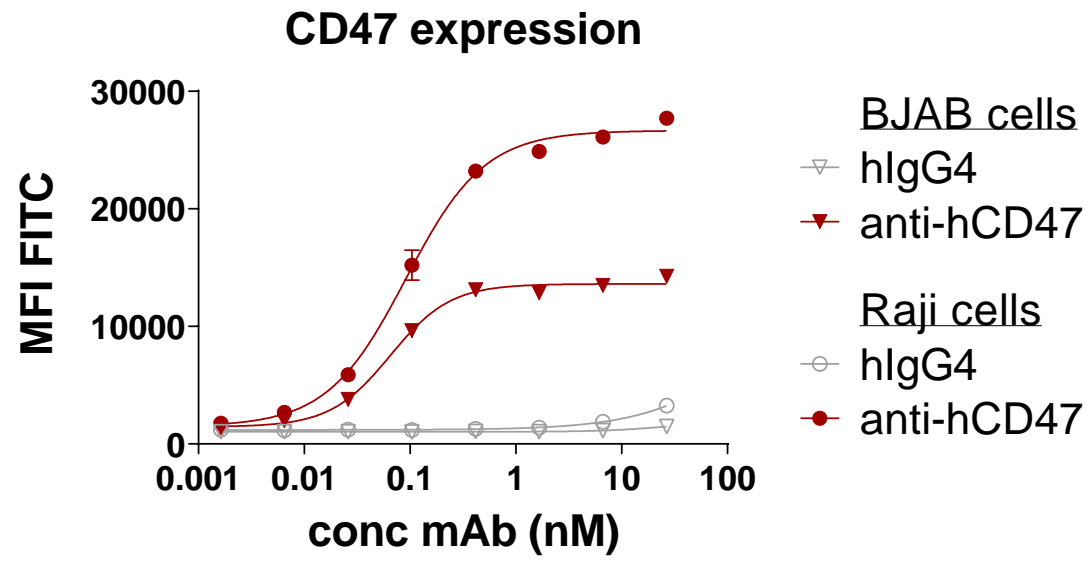
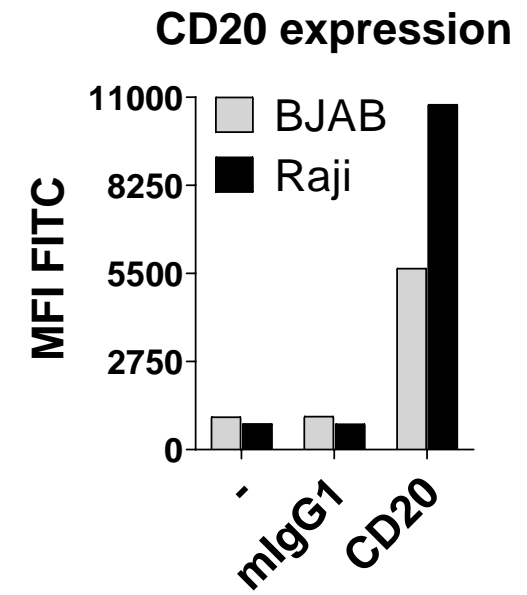


**A****B**

**Additional file 3: Figure S1.** CD20 and CD47 expression in human Burkitt's lymphoma cell lines. (A) CD47 expression was determined in BJAB and Raji human Burkitt's lymphoma cell lines. (Mean  $\pm$  SD is shown). (B) CD20 expression was determined in BJAB and Raji human Burkitt's lymphoma cell lines.