

Correction: HHLA2 and PD-L1 co-expression predicts poor prognosis in patients with clear cell renal cell carcinoma

Zhou Q, Li K, Chen X, et al. HHLA2 and PD-L1 co-expression predicts poor prognosis in patients with clear cell renal cell carcinoma. *J Immunother Cancer* 2020;8:e000157. doi: 10.1136/jitc-2019-000157

In this article, the last panels in figure 3C and 3D incorrectly show the same image. The corrected figure 3 is shown below

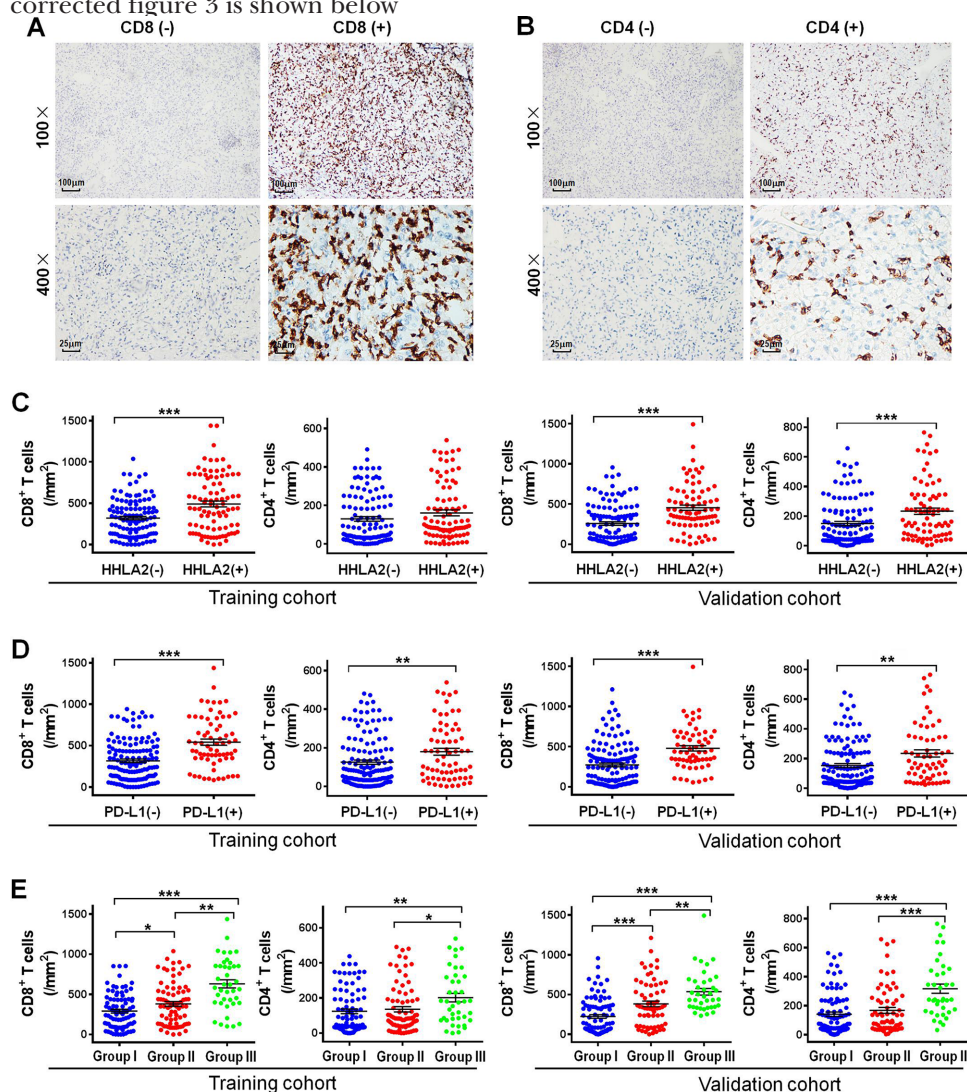


Figure 3. Representative micrographs of CD8 (A) and CD4 (B) expression and the corresponding negative controls within the tumor. Scatter plot depicted the correlation between HHLA2 and PD-L1 expression and classic subsets of T cells. (C) The correlation of HHLA2 expression and CD8+ T cells and CD4+ T cells in the training cohort and validation cohort. (D) The correlation of PD-L1 expression and CD8+ T cells and CD4+ T cells in the training cohort and validation cohort. (E) The correlation of the HHLA2/PD-L1 co-expression and CD8+ T cells and CD4+ T cells in the training cohort and validation cohort. Group I: HHLA2 (-)/PD-L1 (-); group II: HHLA2 (+)/PD-L1 (-) or HHLA2 (-)/PD-L1 (+); group III: HHLA2 (+)/PD-L1 (+). HHLA2, human endogenous retrovirus-H long terminal repeat-associated protein 2; PD-L1, programmed death 1 ligand 1.

Additionally, in the Results section titled 'Immune classification for ccRCC' the sentence "1.9% (4/206) and 2.5% (5/197) belong to type AIII, defined as negative

TILs and both positive (HHLA2 (-)/PD-L1 (-)); 21.8% (45/206) and 22.3% (44/197) belong to type BI, defined as positive TILs and both negative; 25.7% (53/206) and 22.3% (44/197) belong to type BII, defined as positive TILs and single positive; 18.0% (37/206) and 15.0% (31/197) belong to type BIII, defined as negative TILs and both positive (online supplementary table 4)” should read “1.9% (4/206) and 2.5% (5/197) belong to type AIII, defined as negative TILs and both positive (HHLA2 (+)/PD-L1 (+)); 21.8% (45/206) and 22.3% (44/197) belong to type BI, defined as positive TILs and both negative; 25.7% (53/206) and 22.3% (44/197) belong to type BII, defined as positive TILs and single positive; 18.0% (37/206) and 15.0% (31/197) belong to type BIII, defined as positive TILs and both positive (online supplementary table 4).”

Open access This is an open access article distributed in accordance with the Creative Commons Attribution 4.0 Unported (CC BY 4.0) license, which permits others to copy, redistribute, remix, transform and build upon this work for any purpose, provided the original work is properly cited, a link to the licence is given, and indication of whether changes were made. See <https://creativecommons.org/licenses/by/4.0/>.

© Author(s) (or their employer(s)) 2020. Re-use permitted under CC BY. Published by BMJ.

J Immunother Cancer 2020;**8**:e000157corr1. doi:10.1136/jitc-2019-000157corr1

