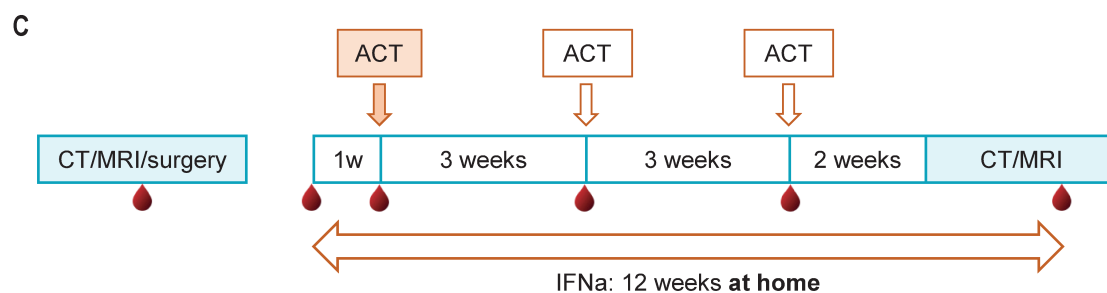
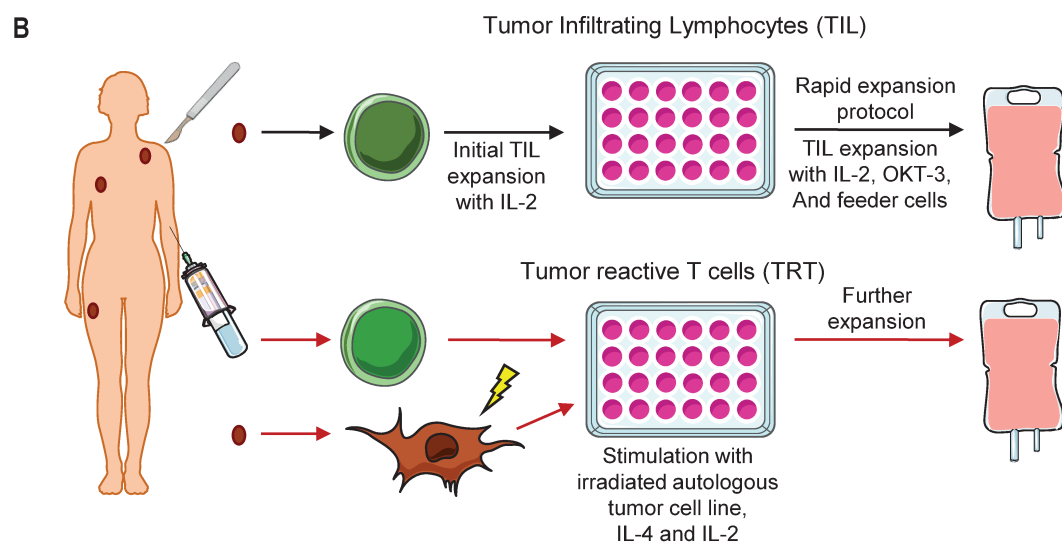
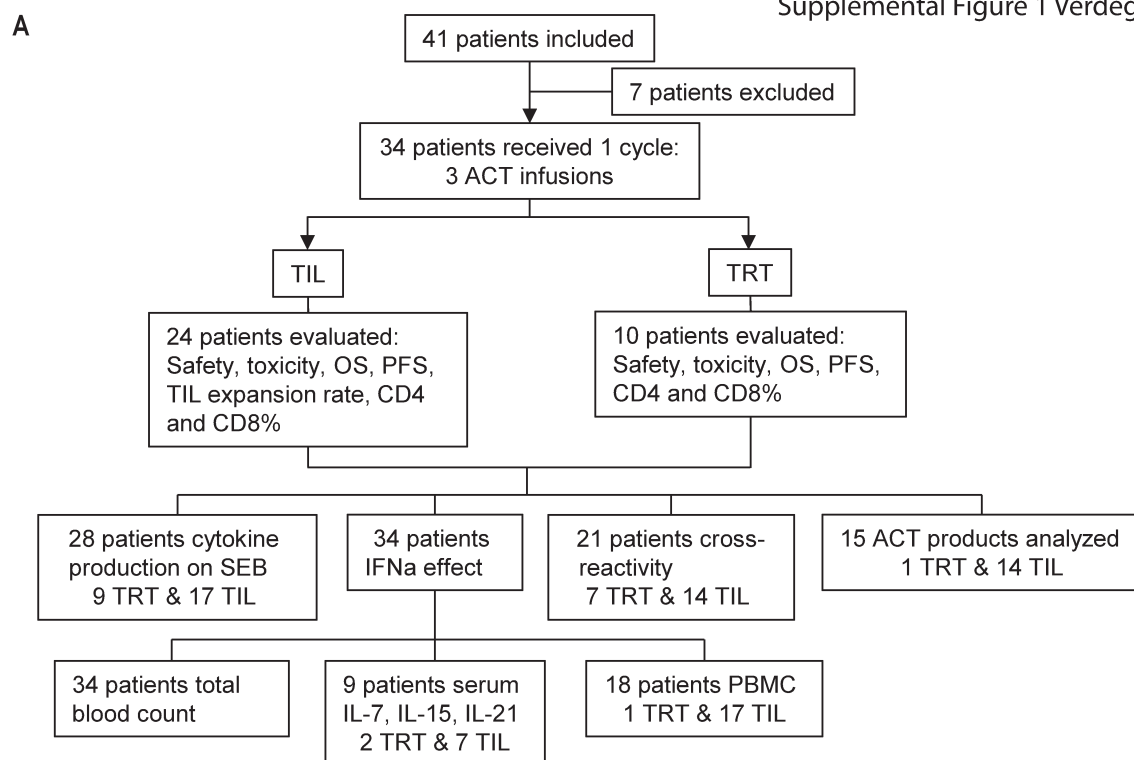


Supplemental Figure 1 Verdegaal et al



**Figure S1. Schematic representation of patient treatment and numbers evaluated, overview of protocol to obtain the ACT product i.e. tumor reactive T cell (TRT) or Tumor Infiltrating Lymphocyte (TIL), and study design. a)** Diagram showing the number of included patients and the number of patients treated with either TRT or TIL for whom the indicated analysis could be performed and evaluated. **b)** Schematic overview of the protocol to obtain TRT and TIL for treatment: TIL were cultured directly from tumor tissue and after initial expansion further expanded using the Rapid Expansion Protocol (REP). TRT were obtained from PBMC by Mixed Lymphocyte Culture (MLTC) and expanded by weekly stimulation with irradiated autologous tumor cells. **c)** Study design: Patients received three T cell infusions with a three week interval, IFNa (3 million U s.c. daily) was initiated one week before the first infusion and continued for a total of 12 weeks. Blood for evaluation was drawn at indicated time points.