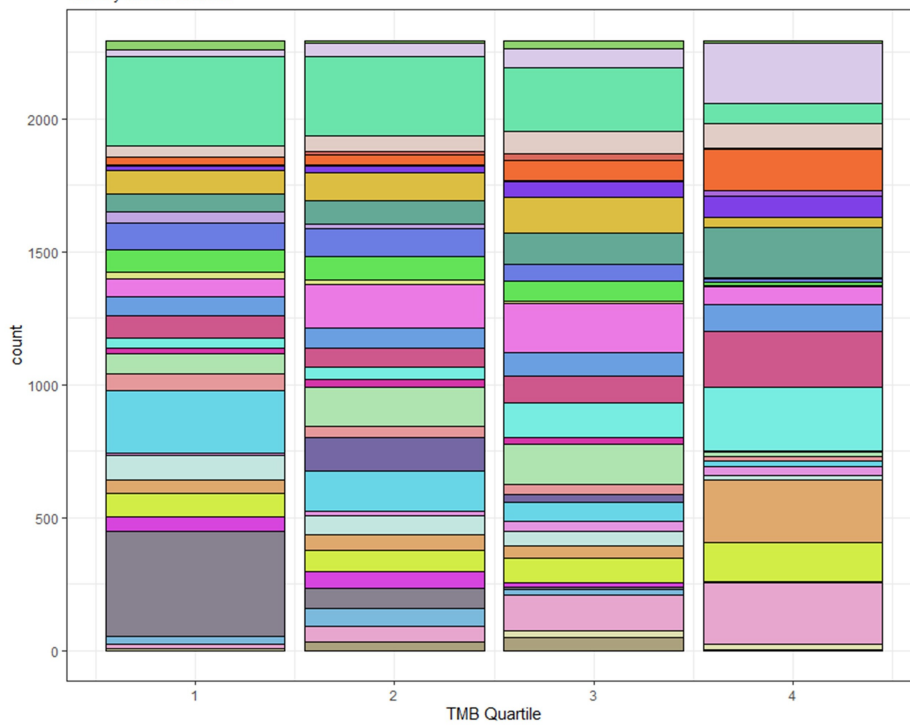


S6

**Tumor Type Composition of Tumor Mutation Burden (TMB) Quartiles**  
TMB by UCSD Method



- Tumor Type**
- ACC = adrenocortical carcinoma
  - BLCA = bladder urothelial carcinoma
  - BRCA = breast invasive carcinoma
  - CESC = cervical squamous cell carcinoma and endocervical adenocarcinoma
  - CHOL = cholangiocarcinoma
  - COAD = colon adenocarcinoma
  - DLBC = diffuse large B-cell lymphoma
  - ESCA = esophageal carcinoma
  - GBM = glioblastoma multiforme
  - HNSC = head and neck squamous cell carcinoma
  - KICH = kidney chromophobe
  - KIRC = renal clear cell carcinoma
  - KIRP = renal papillary cell carcinoma
  - LAML = acute myeloid leukemia
  - LCML = chronic myelogenous leukemia
  - LGG = lower grade glioma
  - LIHC = hepatocellular carcinoma
  - LUAD = lung adenocarcinoma
  - LUSC = lung squamous cell carcinoma
  - MESO = mesothelioma
  - OV = ovarian serous cystadenocarcinoma
  - PAAD = pancreatic adenocarcinoma
  - PCPG = pheochromocytoma and paraganglioma
  - PRAD = prostate adenocarcinoma
  - READ = rectum adenocarcinoma
  - SARC = sarcoma
  - SKCM = cutaneous melanoma
  - STAD = stomach adenocarcinoma
  - TGCT = testicular germ cell tumor
  - THCA = thyroid carcinoma
  - THYM = thymoma
  - UCEC = uterine corpus endometrial carcinoma
  - UVM = uveal melanoma