

Supplementary datasheet

Title: Flow cytometric evaluation of CD38 expression levels in the newly diagnosed T-cell acute lymphoblastic leukemia and the effect of chemotherapy on its expression in measurable residual disease, refractory disease and relapsed disease: An implication for anti-CD38 immunotherapy.

Supplementary Table S1. 10-11 color acute leukemia antibody panel.													
Fluorochromes	BV 786	BV 650	BV 605	BV 510	BV 421	FITC	PE	ECD/PE-CF594	PerCP-Cy5.5/ PC5.5	PC7	APC	APC AF700	APC AF750
Tube-1	CD25	X	X	CD20	CD123	CD304	CD86	CD73	CD34	CD10	CD19	CD45	CD38
Clone				2H7	9F5	AD517 F6	HA5.2 B7	AD2	8G12	ALB1	J3-119	J.33	LS198-4-3
Company	BD			BL	BD	MB	BC	BD	BD	BC	BC	BC	BC
Tube-2	CD16	X	X	HLA-DR	CD117	CD15	CD13	CD19	CD34	CD56	CD7	CD45	CD38
Clone				L243	YB5.B8	80H5	SJ1D1	J3-119	8G12	N901 (HLD A6)	8H8.1	J.33	LS198-4-3
Company	BD			BL	BD	BC	BC	BC	BD	BC	BC	BC	BC
Tube-3	CD14	X	X	HLA-DR	CD36	CD163	CD123	CD64	CD33	CD117	CD34	CD45	CD38
Clone				L243	FA6.152	GHI/61	9F5	22	D3HL60.251	104D2 D1	581	J.33	LS198-4-3
Company	BD			BL	PB_B C	BD	BC	BC	BC	BC	BC	BC	BC
Tube-4	CD16+56	X	X	sCD3	CD5	CD4	CD7	CD34	TCR $\gamma\delta$	CD2	CD1a	CD45	CD8
Clone				OKT3	UCHT2	13B8.2	8H8.1	581	IMMU510	39C1.5	BL6	J.33	B9.11
Company	BD			BL	BD	BC	BC	BC	BC	BC	BC	BC	BC
Tube-5				x	CD117	AMPO	cyto CD79a	cytoCD3	x	CD22	CD34	CD45	CD11b
Clone				x	YB5.B8	CLB-MPO-1	HM47	UCHT1	x	SJ10.1 H11	581	J.33	Bear1
Company	BD			x	BD	BC	BC	BC	x	BC	BC	BC	BC

Abbreviations: BC, Beckman Coulter; BD, Becton Dickinson biosciences; BL, BioLegend; MB, Miltenyi Biotec, TF, ThermoFisher

Formatted: Font: 8 pt, Bold

Formatted: Font: 8 pt, Bold

Formatted: Font: 8 pt, Bold

Supplementary Table S2. 10-color 11-antibody T-cell ALL MRD panel

Fluorochromes	BV510	BV421	FITC	PE	ECD	PC5.5	PC7	APC	APC-A700	APC-A750
Main MRD tube	CD16 & CD56	CD3	CD8	CD7	cytoCD3	CD34	CD5	CD4	CD45	CD38
Clone	3G8 & HCD56	UCHT1	B9.11	8H8.1	UCHT1	8G12	BL1a	13B8.2	J.33	LS198-4-3
Company	BL	BD	BC	BC	BC	BD	BC	BC	BC	BC
Syto13 tube	x	x	Syto13	x	x	x	x	CD7	CD45	x
Clone								8H8.1	J.33	
Company			TF					BC	BC	

Additional T-ALL MRD antibody panel

Fluorochromes	CD16+ CD56	CD3	Anti-TdT	CD7	Cyto CD3	CD13 + CD33	CD117	CD1a	CD45	CD38
Clone	3G8/HCD56	UCHT1	HTDT-6	8H8.1	UCHT1	Immu103.4/4/D3/HL60.251	104 D2D1	BL6	J.33	LS198-4-3
Company	BL	BL	Suprat ech	BC	BC	BC	BC	BC	BC	BC

Abbreviations: BC, Beckman Coulter; BD, Becton Dickinson biosciences; BL, BioLegend; TF, ThermoFisher Scientific (Invitrogen).

Formatted: Font: (Default) Times New Roman, 10 pt

Formatted: Font: (Default) Times New Roman, 10 pt

Formatted: Font: (Default) Times New Roman, 10 pt

Formatted: Font: (Default) Times New Roman, 10 pt

Formatted: Font: (Default) Times New Roman, 10 pt

Formatted: Font: (Default) Times New Roman, 10 pt

Formatted: Font: (Default) Times New Roman, 10 pt

Formatted: Font: (Default) Times New Roman, 10 pt

Formatted: Font: (Default) Times New Roman, 10 pt

Formatted: Font: (Default) Times New Roman, 10 pt

Formatted: Font: (Default) Times New Roman, 10 pt

Formatted: Font: (Default) Times New Roman, 10 pt

Formatted: Font: (Default) Times New Roman, 10 pt

Formatted: Font: (Default) Times New Roman, 10 pt

Formatted: Font: (Default) Times New Roman, 10 pt

Formatted: Font: (Default) Times New Roman, 10 pt

Formatted: Font: (Default) Times New Roman, 10 pt

Formatted: Font: (Default) Times New Roman, 10 pt

Formatted: Font: (Default) Times New Roman, 10 pt

Formatted: Font: (Default) Times New Roman, 10 pt

Formatted: Font: (Default) Times New Roman, 10 pt

Formatted: Font: (Default) Times New Roman, 10 pt

Formatted: Font: (Default) Times New Roman, 10 pt

Formatted: Font: (Default) Times New Roman, 10 pt

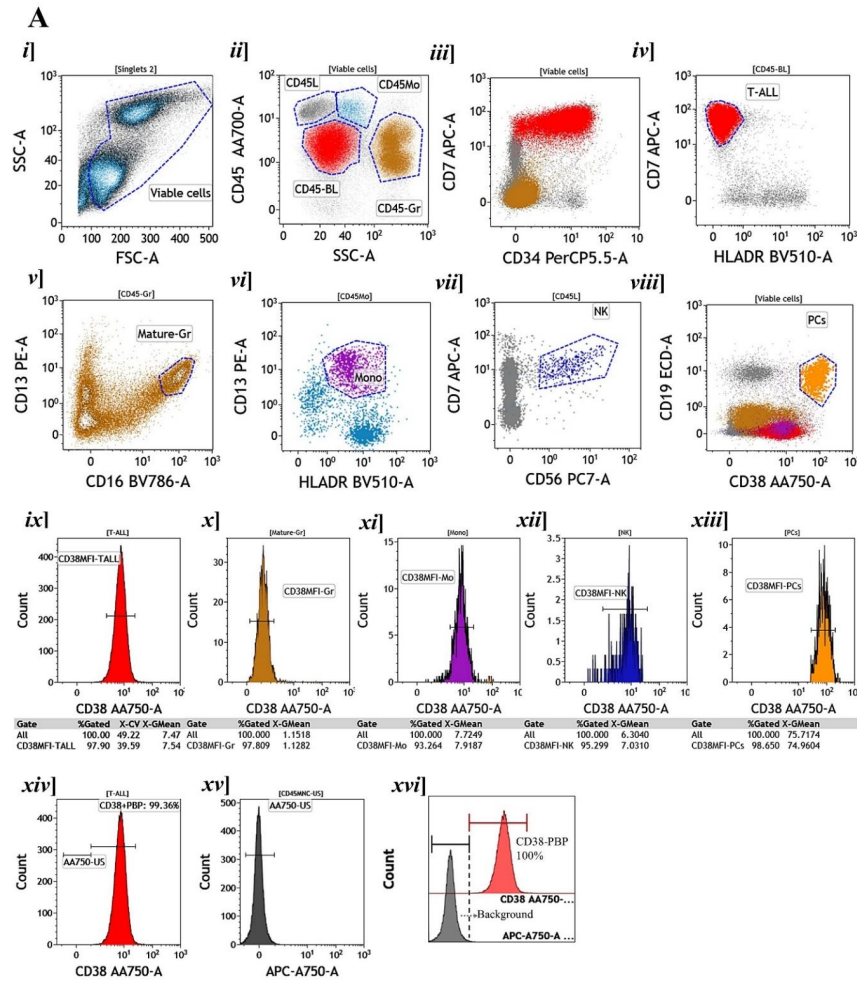
Formatted: Font: (Default) Times New Roman, 10 pt

Formatted: Font: (Default) Times New Roman, 10 pt

Formatted: Font: (Default) Times New Roman, 10 pt

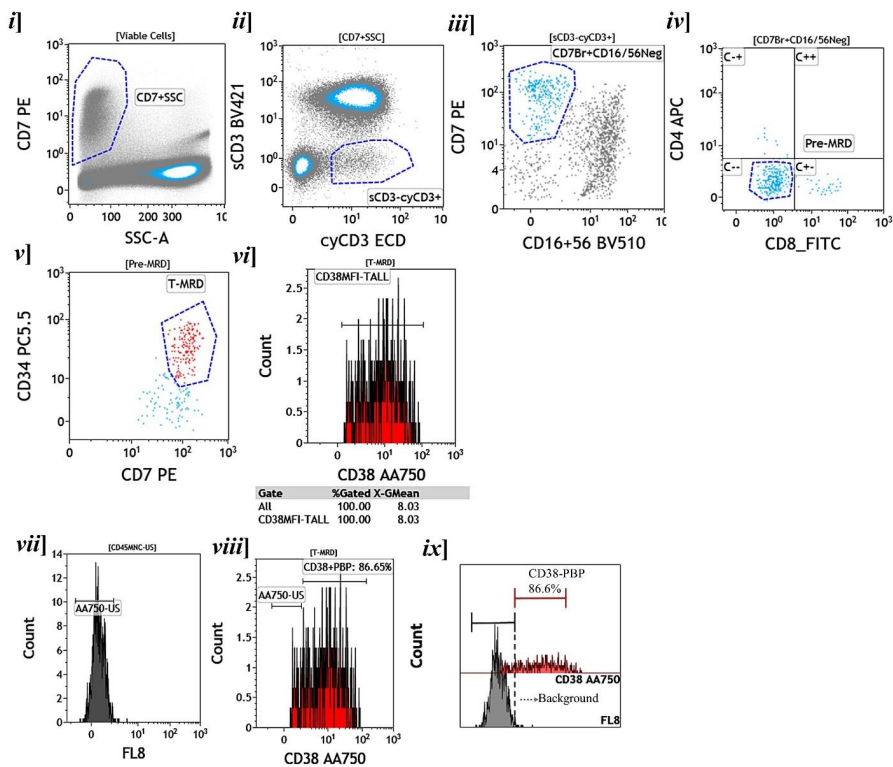
Formatted: Font: (Default) Times New Roman, 10 pt

Supplementary Figure S1-A: Gating strategy for the evaluation of CD38 expression in blasts, granulocytes, monocytes, NK cells and plasma cells.



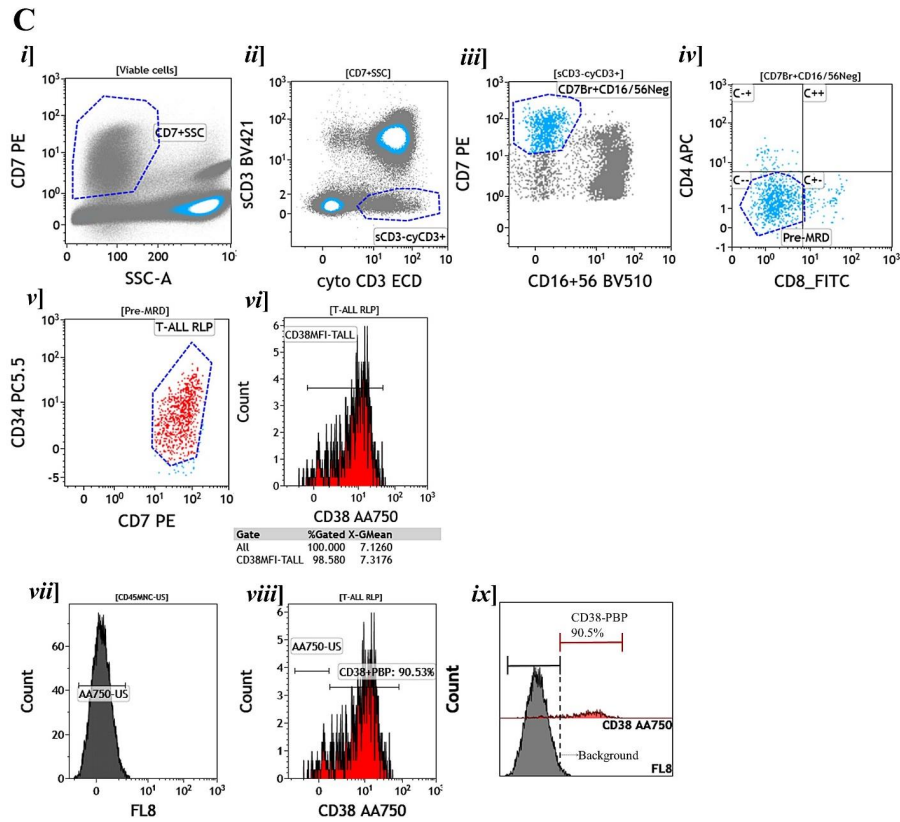
Supplementary Figure S1-B: Gating strategy for the evaluation of CD38 expression in residual blasts of T-ALL from MRD sample using MFC-MRD panel.

B

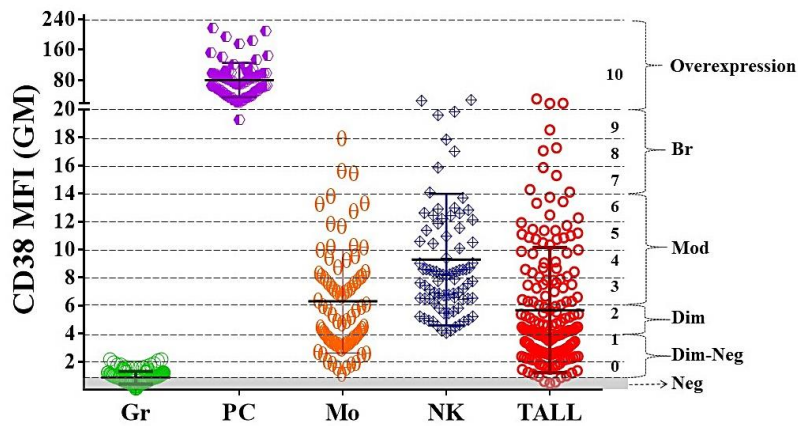


5

Supplementary Figure S1-C: Gating strategy for the evaluation of CD38 expression in residual blasts of T-ALL from bone marrow sample with relapse using MFC-MRD panel.



Supplementary Figure S3



Supplementary Figure S3. The box and whisker plot demonstrated an assessment of the level of CD38 expression using a normalized mean fluorescent intensity (nMFI) score in leukemic blasts. (*Abbreviations:* Gr-granulocytes, Mo-monocytes, NK, NK-cells, PC, plasma cells, T-ALL, T-cell acute lymphoblastic leukemia).

|

7

