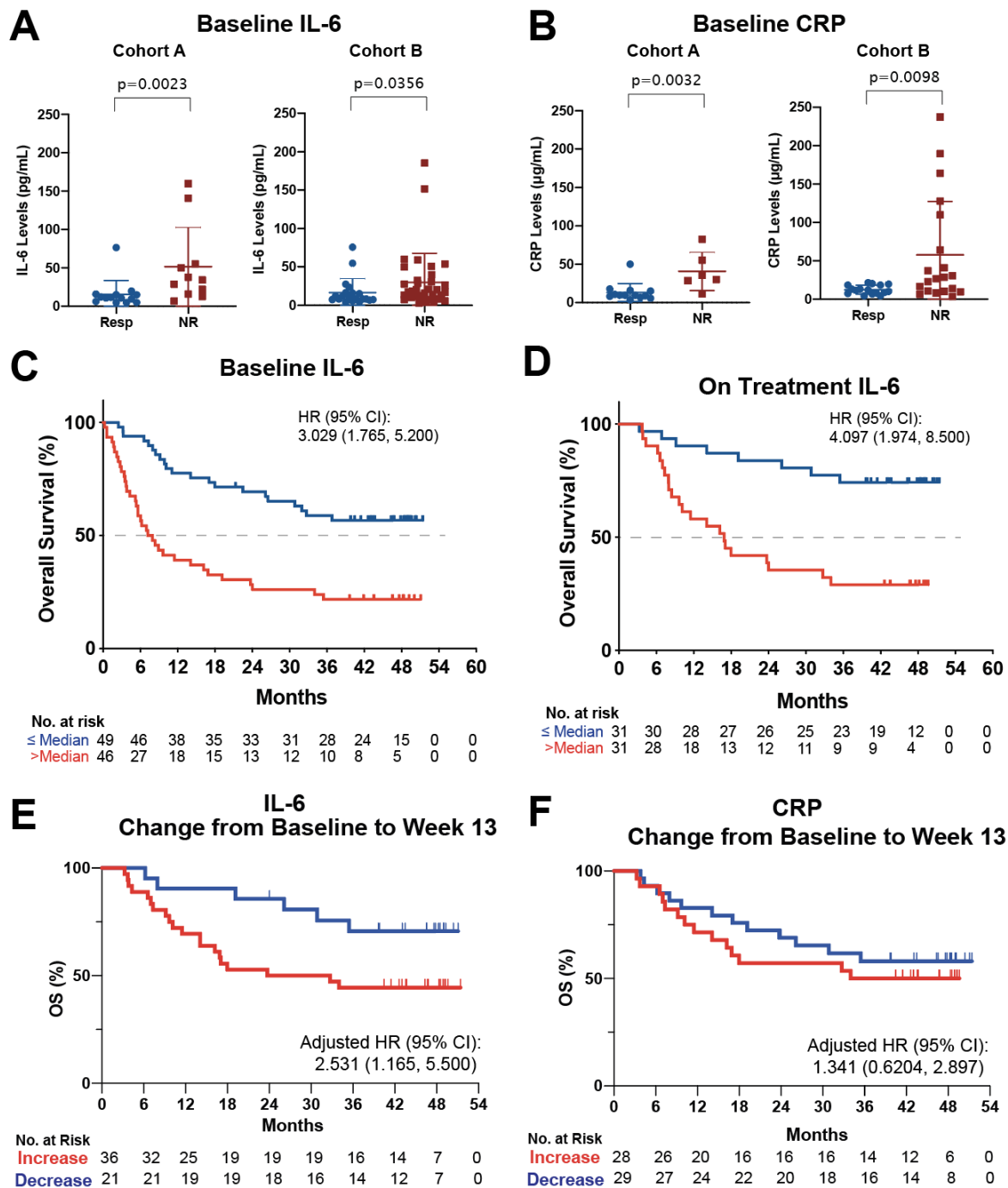


1 **Supplemental Figure 1.**

2

3

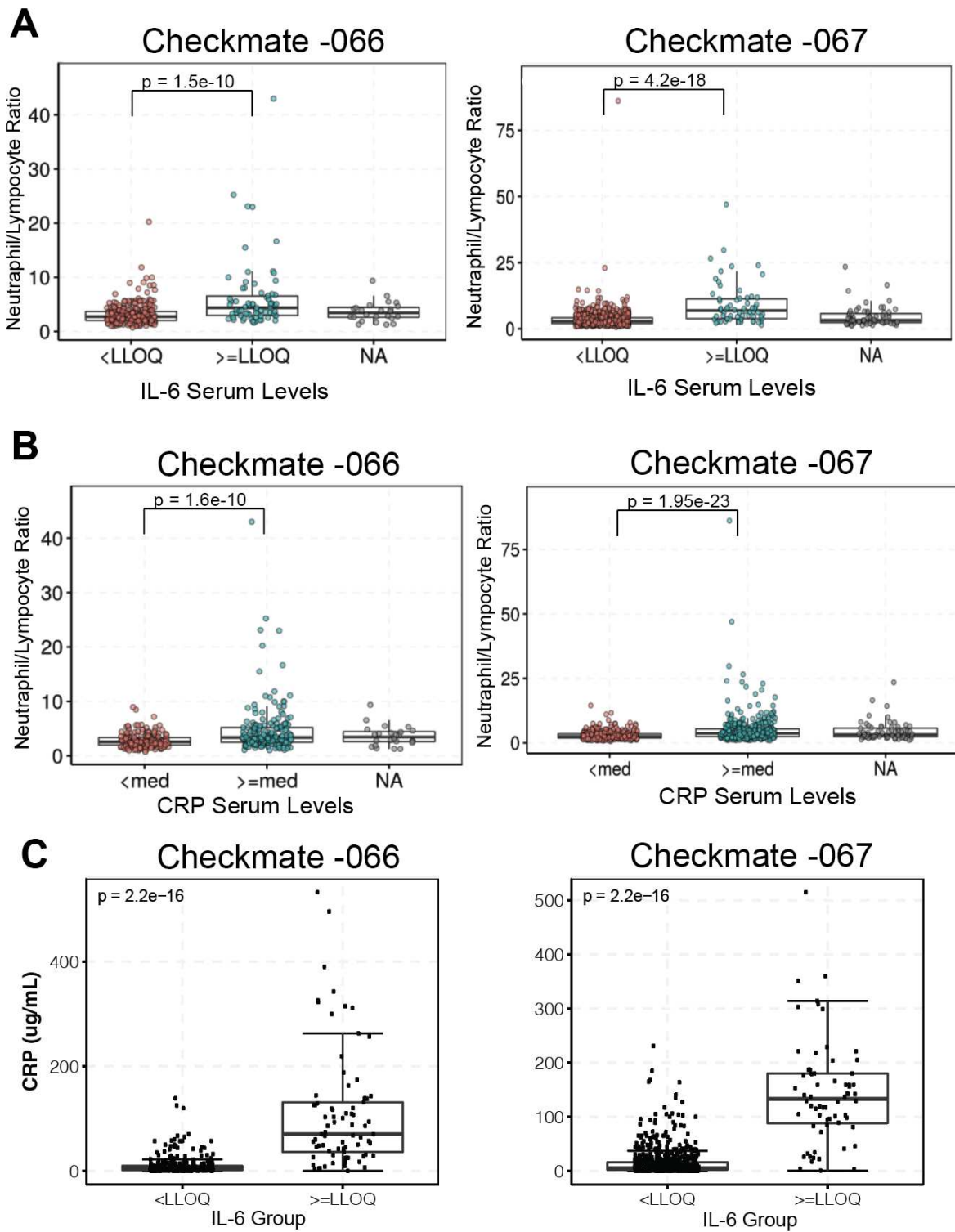


4

5

6

1 **Supplemental Figure 1. Serum IL-6 levels are associated with Checkmate-064 patient**
2 **response and survival. (A)** IL-6 levels were compared in responders and non-responders
3 (NR). Responders were defined as complete or partial response, non-responders had
4 progression of disease. **(B)** CRP was likewise compared. **(C,D)** Survival curves were
5 determined based on **(C)** baseline or **(D)** week 13 serum IL-6 levels divided at the median.
6 Patients with less than or equal to the median value are represented in blue and those with
7 greater than median values in red. **(E)** Survival curves were determined based IL-6 serum level
8 changes from baseline to week 13. Patients with increases in IL-6 are shown in red and those
9 with decreases in blue. **(F)** Survival curves were likewise determined for changes in CRP
10 levels. For all survival curves, Cohort A and Cohort B were combined.



1
2
3

1 **Supplemental Figure 2: Comparisons of IL-6, CRP and N/L ratios. (A)** The N/L ratio was
2 compared between patients with less than the LLOQ for IL-6 and those with greater than the
3 LLOQ for IL-6. **(B)** The N/L ratio was likewise compared between patients with the less than
4 the median value of CRP and those with greater than the median value for CRP. **(C)** CRP
5 levels were compared between patients with less than the LLOQ for IL-6 and those with
6 greater than the LLOQ for IL-6.
7