

SUPPLEMENTAL FIGURE

Figure S1

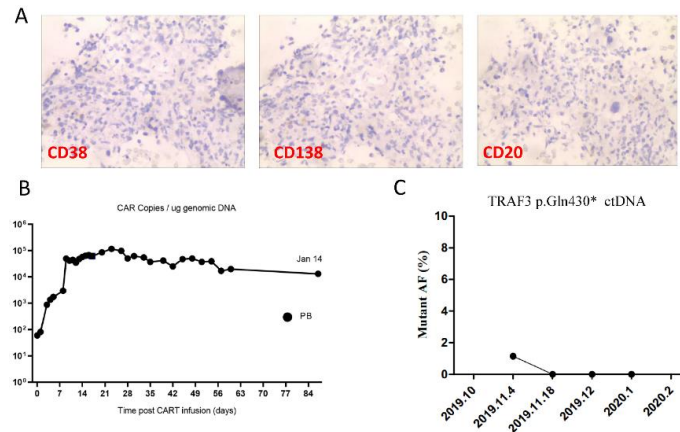


Figure S1. The case 2 with refractory multiple myeloma achieved complete remission and persistent CAR cells post BCMA CAR T therapy. A: Bone marrow biopsy after BCMA CAR T therapy showed negative for CD 38 ($\times 400$), CD138 ($\times 400$) and CD20 ($\times 400$), no aberrant plasma cells can be found; the purple cells were normal blood cells in all stages of hemapoiesis. B: the CAR copies was detected by Bio-Rad QX200 Droplet Digital PCR and it showed high CAR copies persisted in the peripheral blood from the patients after 87 days of CAR T therapy. C: Circulating tumor DNA measurements for TRAF3 p.Gln430 indicated no residual disease can be detected.

Table S1 Molecular detection of SARS-COV-2 in swabs. Data are shown as qPCR Ct values

	Days after symptoms onset	Swab location	Orf1b	N
Case 1	d6	Nasopharynx	36.1	37.2
	d17	Throat	19.0	22.4
	d29	Throat	20.3	23.7
	d31	Nasopharynx	15.2	17.9
Case2	d7	Throat	33.4	35.6
	d23	Throat	> 40	> 40
	d25	Throat	> 40	> 40
	d37	Throat	> 40	> 40
	d41	Throat	> 40	> 40

RT-PCR assay of SARS-CoV-2 RNA was conducted to amplify and test two target genes including open reading frame1ab (Orf1b) and nucleocapsid protein. Ct value > 40 defines negative result.