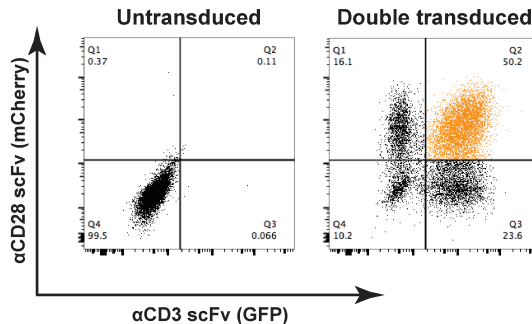


## Supplementary Figure 1



### Supplementary Figure 1. Pre-sort population of K562 cells transduced with CRS.

Parental K562 cells were transduced with  $\alpha$ -CD3-GFP and  $\alpha$ -CD28-mCherry Chimeric Stimulatory Receptors (CRS). aAPC were isolated by fluorescent-activated cell sorting from of the double positive population highlighted in orange with high mean fluorescence intensity.