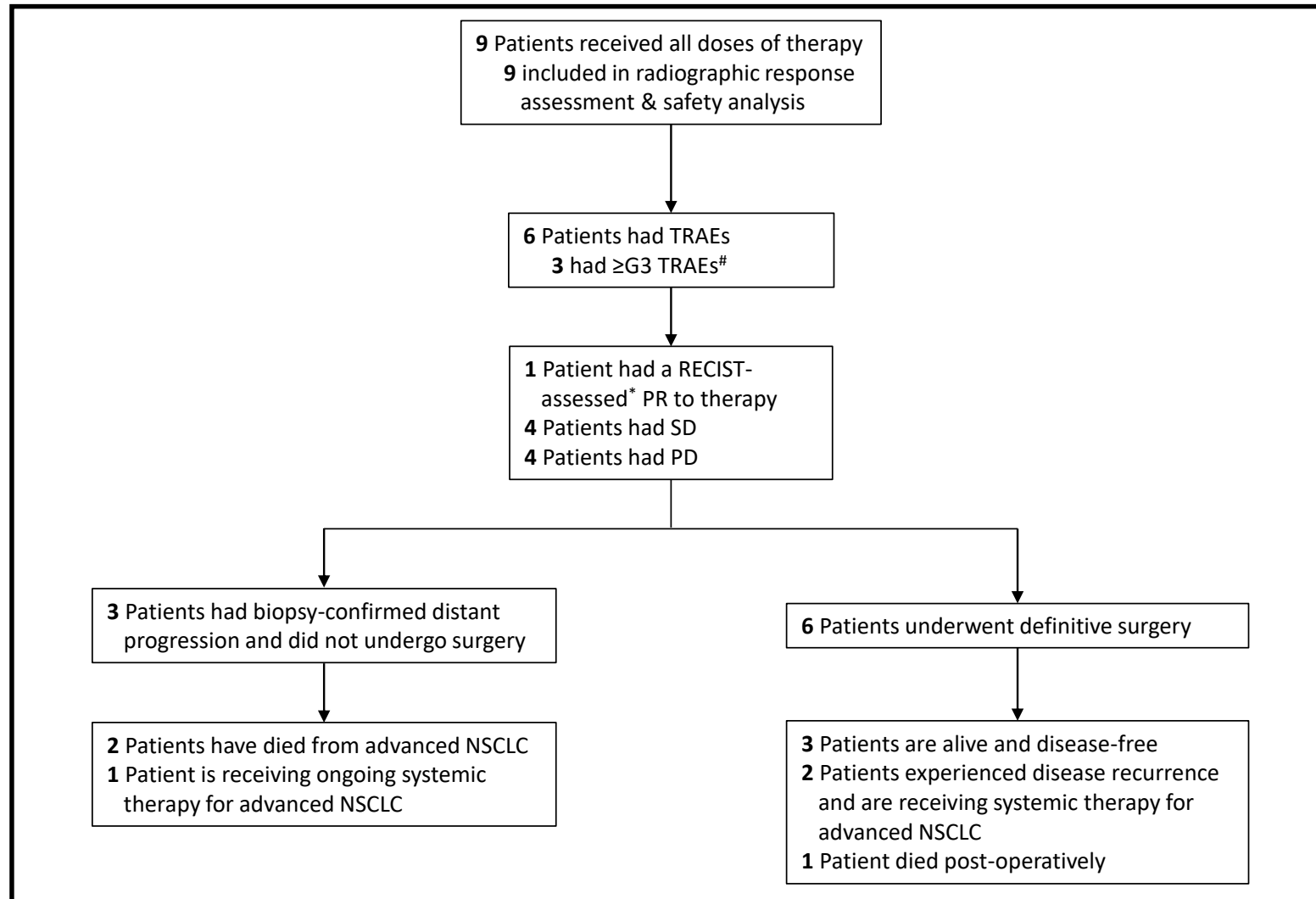


Supplemental Figure 2



Supplemental Figure 2: Patient flow chart of clinical outcomes

#One G5 TRAE (ARDS) coded as “possibly-related” TRAE but suspected to be more likely related to post-surgical complication. All other TRAEs were G3. *all radiographic RECIST assessments were unconfirmed, as only one post-neoadjuvant treatment imaging assessment was made prior to surgical resection. ARDS: acute respiratory distress syndrome; G: grade; NSCLC: non-small cell lung cancer; PD: progressive disease; PR: partial response; RECIST: response evaluation criteria in solid tumors; SD: stable disease.