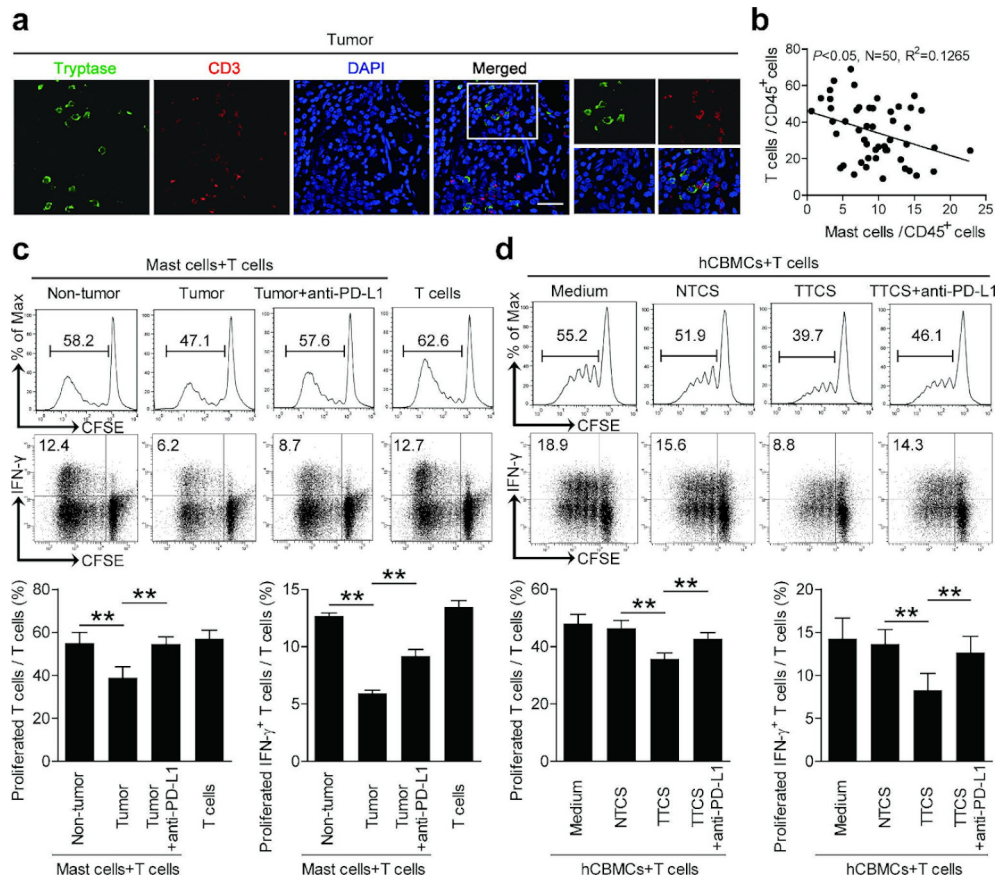


Correction: Increased intratumoral mast cells foster immune suppression and gastric cancer progression through TNF- α -PD-L1 pathway

Ly Y, Zhao Y, Wang X, *et al.* Increased intratumoral mast cells foster immune suppression and gastric cancer progression through TNF- α -PD-L1 pathway. *J Immunother Cancer* 2019;7:54. doi: 10.1186/s40425-019-0530-3

Since the online publication of this article, the authors noticed that the results of tumor-infiltrating mast cells in inhibiting IFN- γ production was mistakenly duplicated in figure 5. The correct is figure below:



Open access This is an open access article distributed in accordance with the Creative Commons Attribution 4.0 Unported (CC BY 4.0) license, which permits others to copy, redistribute, remix, transform and build upon this work for any purpose, provided the original work is properly cited, a link to the licence is given, and indication of whether changes were made. See <https://creativecommons.org/licenses/by/4.0/>.

© Author(s) (or their employer(s)) 2020. Re-use permitted under CC BY. Published by BMJ.

J Immunother Cancer 2020;8:e0530-3corr1. doi:10.1136/jitc-2020-0530-3corr1

