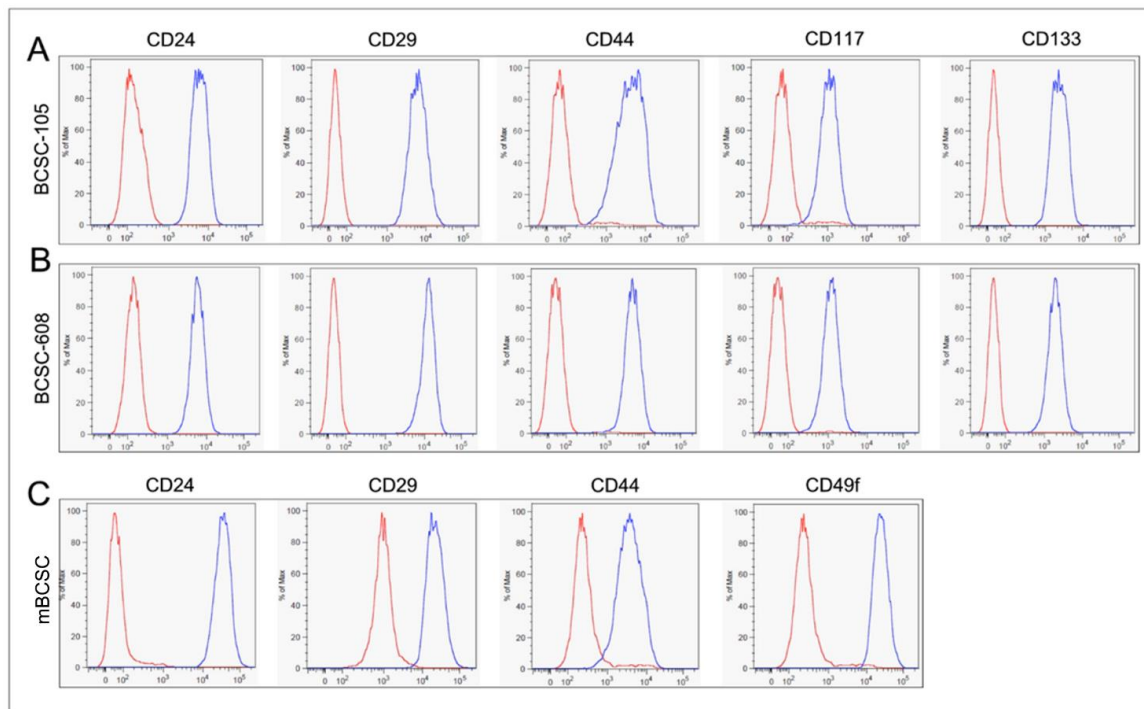
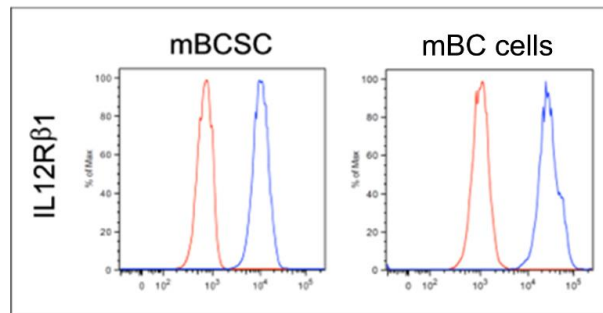


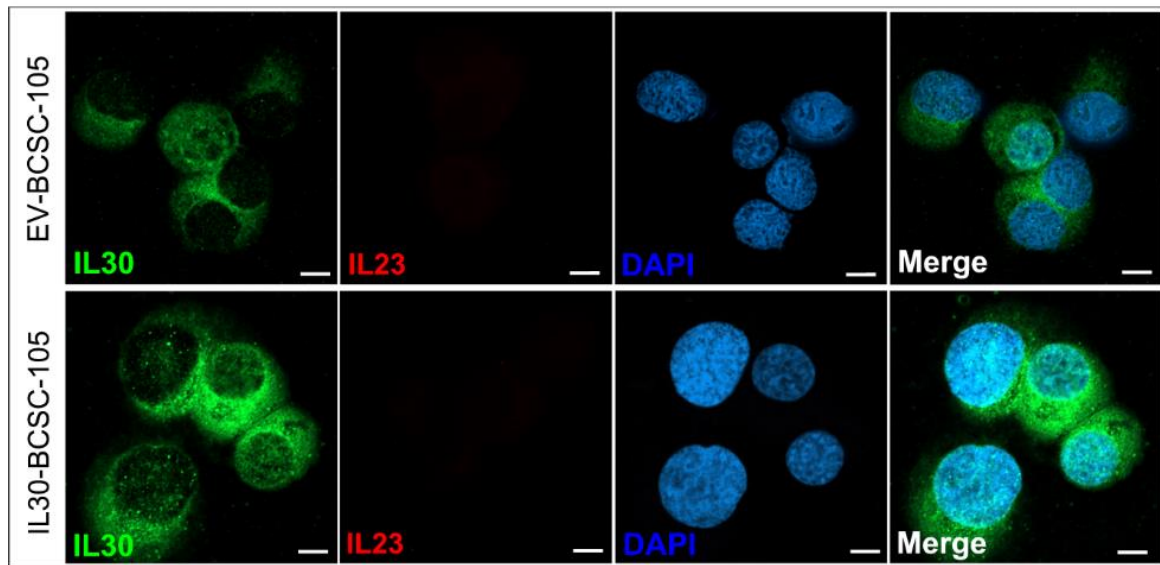
**Supplemental Figure S1. (A)** Automated immune cell count in tumors developed after implantation of  $1 \times 10^3$  (brown bars) or  $1 \times 10^4$  (green bars) mBCSCs in syngeneic mice, assessed by immunohistochemistry, as described in Materials and Methods. No significant differences emerged, between the two tumor masses, in the number of different immune cell populations. Student's *t*-test:  $p > 0.10$ . **(B)** Tumors developed after orthotopic implantation of  $1 \times 10^3$  mBCSCs, in syngeneic mice, reveal **(a)** histological features, **(b)** vascular network (mean number  $\pm$  SD of CD31 positive vessels/field:  $5.67 \pm 2.24$ , in tumors developed from  $1 \times 10^3$  cells, *versus*  $6.44 \pm 1.51$  in tumors developed from  $1 \times 10^4$  cells. Student's *t*-test:  $p > 0.10$ ), **(c)** proliferation index (mean percentage  $\pm$  SD of PCNA positive cells/number of total cells per field:  $47.11 \pm 3.41\%$ , in tumors developed from  $1 \times 10^3$  cells, *versus*  $49.00 \pm 3.20\%$ , in tumors developed from  $1 \times 10^4$  cells. Student's *t*-test:  $p > 0.10$ ), and **(d-h)** immune cell content comparable to tumors developed after orthotopic implantation of  $1 \times 10^4$  mBCSCs (or EV-mBCSCs) (in the manuscript, see Figures 5C, a, e, g; Figures 5G, a, c, e, g; and Figure 5H, a). Magnification a, b: X200; c-g: X400; h: X630. Scale bars a, b: 30  $\mu$ m; c-g: 20  $\mu$ m; h: 10  $\mu$ m.



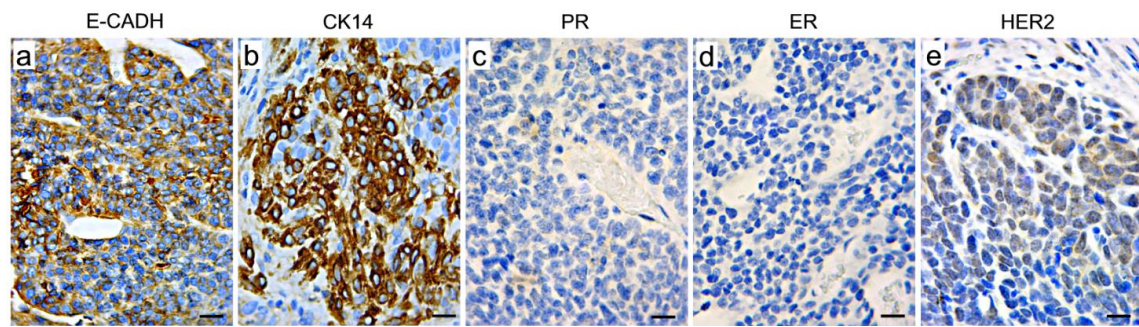
**Supplemental Figure S2.** Cytofluorimetric analyses of stem cell marker expression in human BCSC-105 (A) and BCSC-608 (B), and in murine (m) BCSCs (C). Blue lines: specific Abs. Red lines: isotype controls. Experiments were performed in triplicate.



**Supplemental Figure S3.** Cytofluorimetric analyses of IL12R $\beta$ 1 expression in mBCSCs, and mBC cells. Blue lines: specific Abs. Red lines: isotype controls. Experiments were performed in triplicate.



**Supplemental Figure S4.** Confocal microscopy images of IL30 (green) and IL23 (red) in EV and IL30 gene transfected BCSC-105 cells. DAPI: DNA stained nuclei. Magnification: X630. Scale bars: 6  $\mu\text{m}$ .



**Supplemental Figure S5.** Immuno-pathological profile of tumors developed after orthotopic implantation of mBCSCs in female C57BL/6J mice. Magnification a, d: X400; b, c, e: X630. Scale bars a, d: 20 μm; b, c, e: 10 μm.