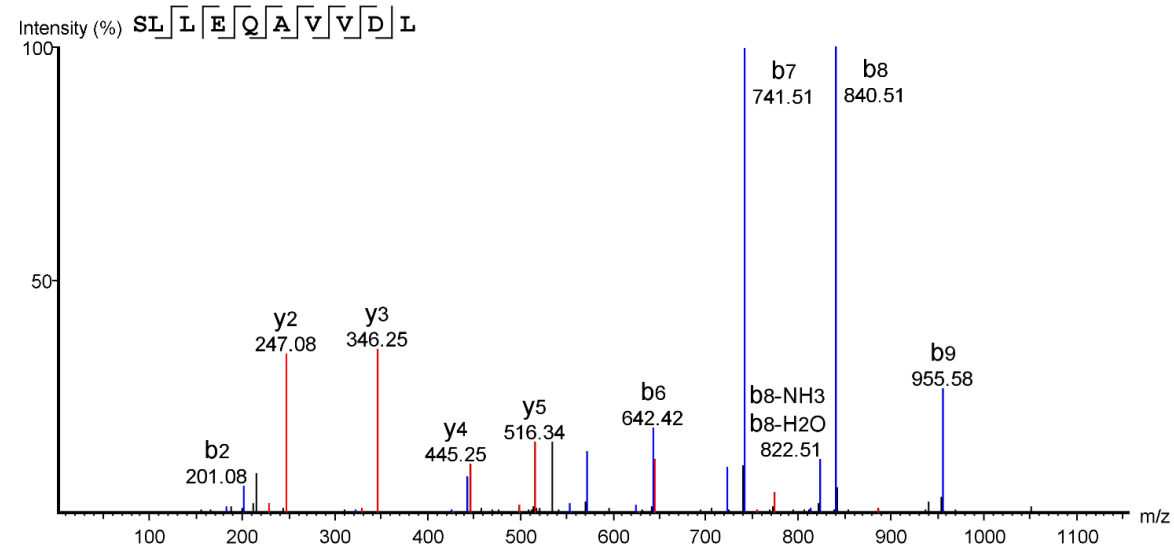
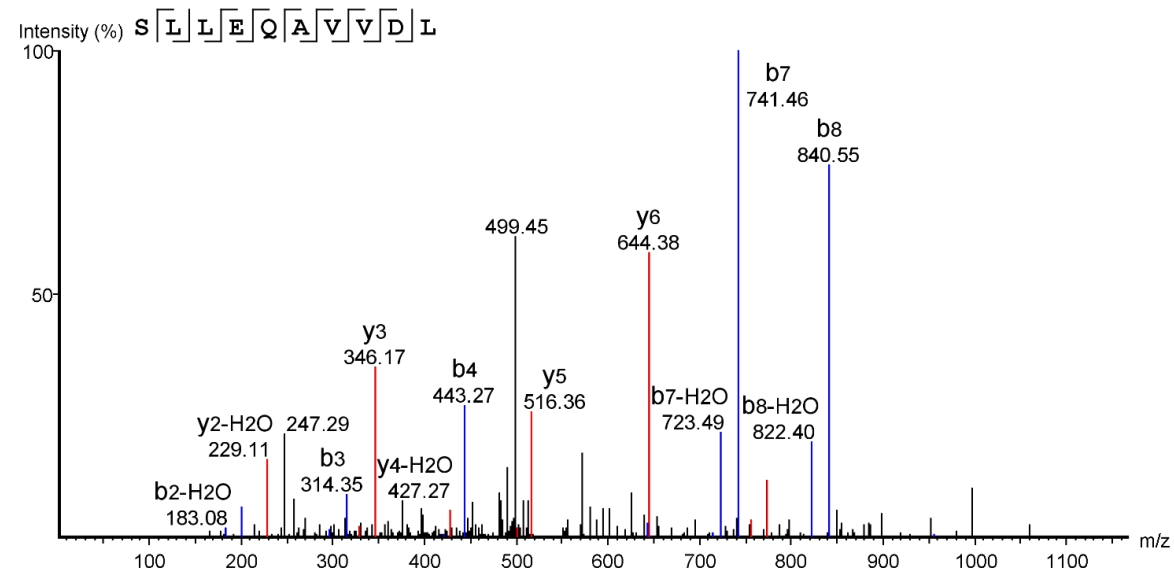


## Supplementary Figure 3A

Synthetic reference peptide

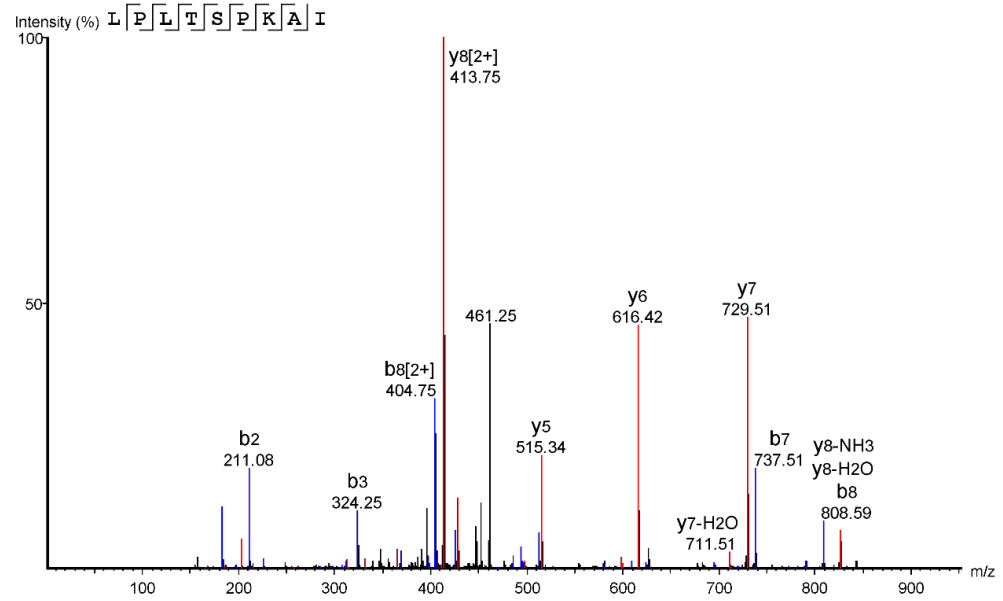


Original peptide

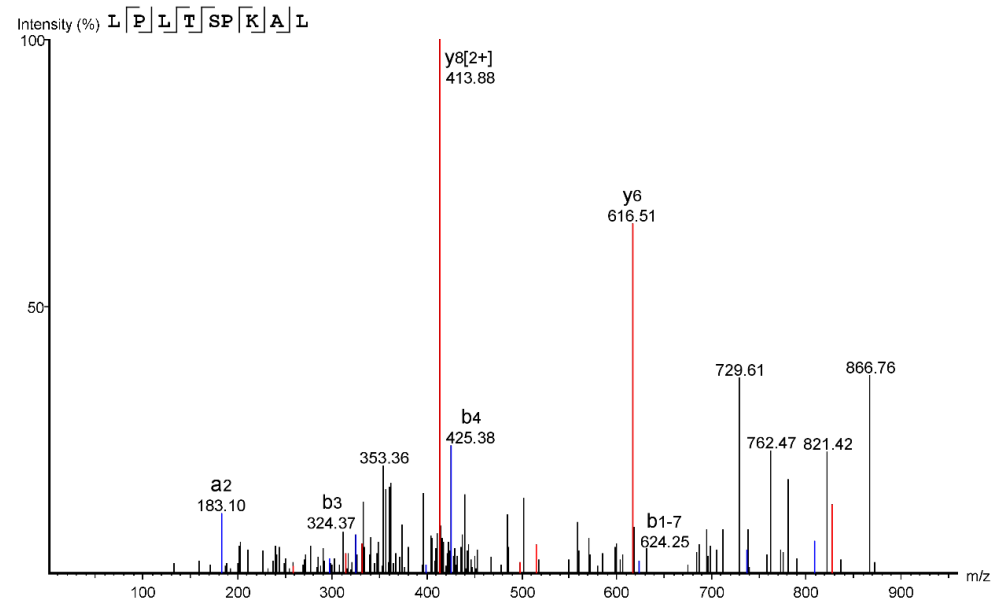


## Supplementary Figure 3B

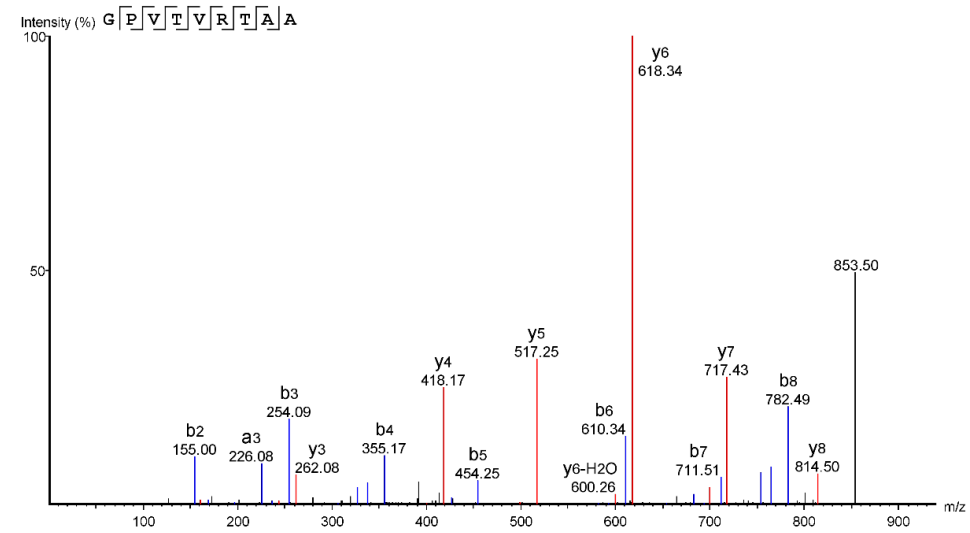
Synthetic reference peptide



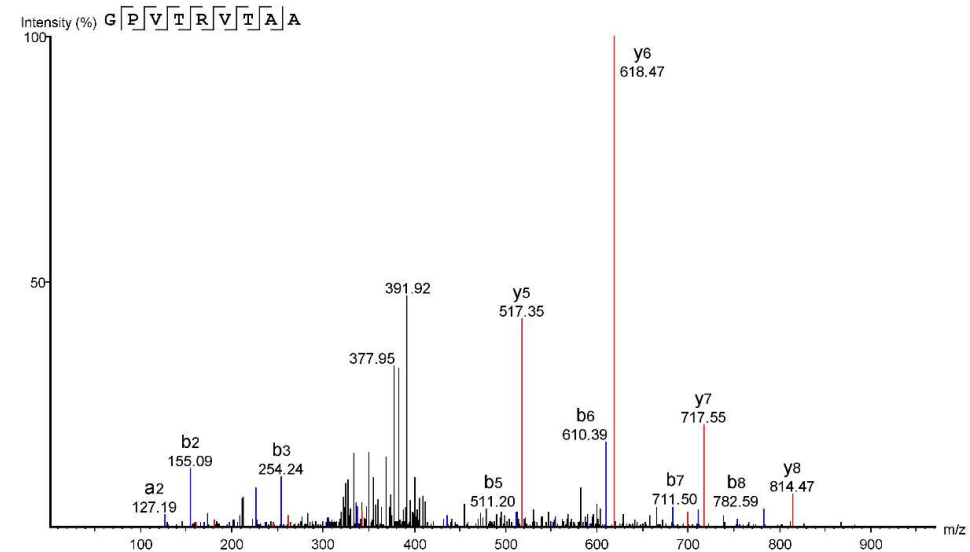
Original peptide



## Supplementary Figure 3C

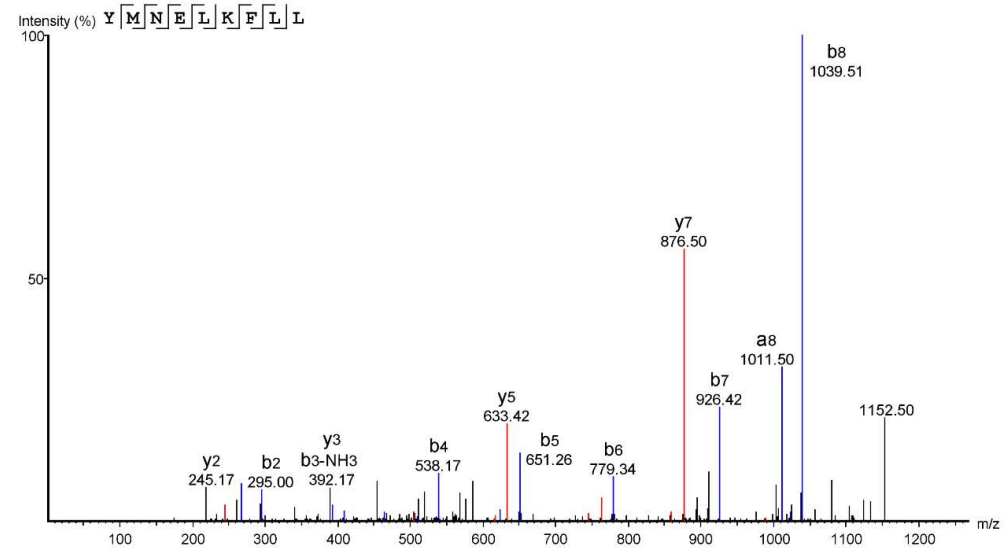


Synthetic reference peptide

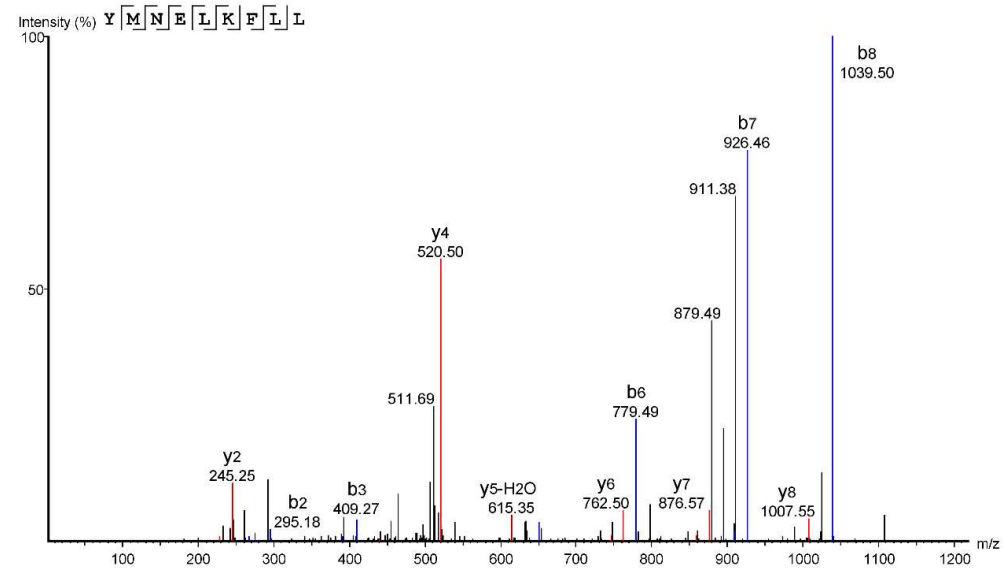


Original peptide

## Supplementary Figure 3D



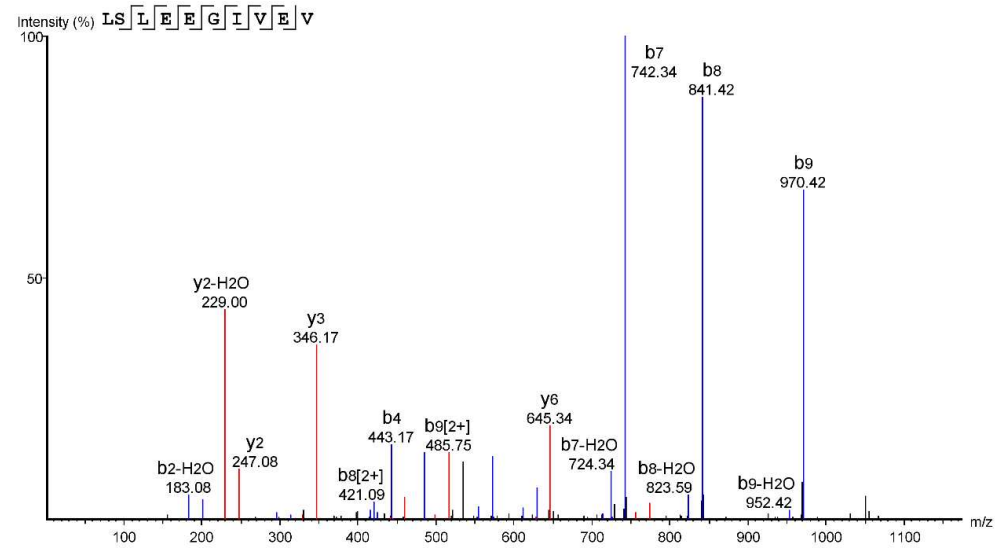
Synthetic reference peptide



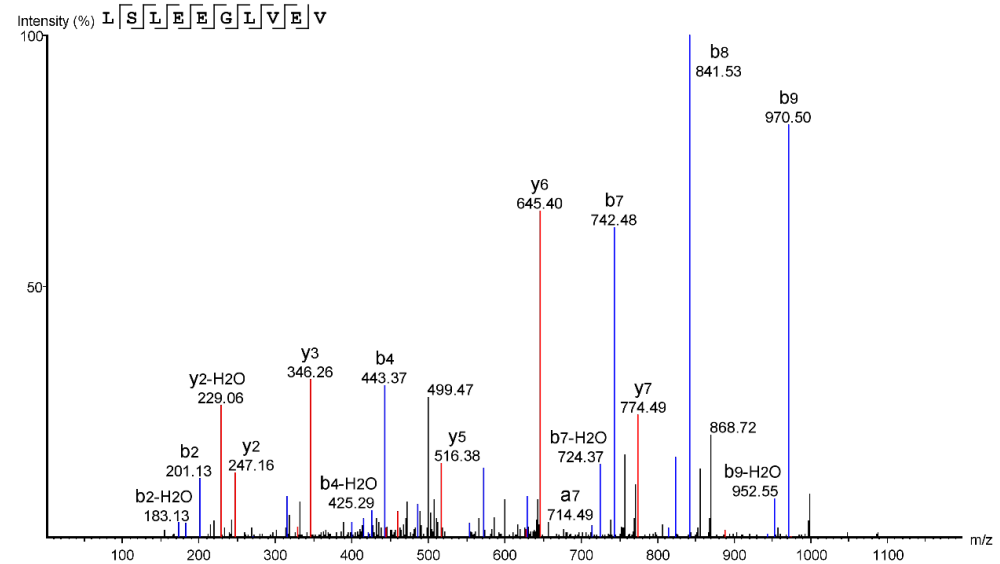
Original peptide

## Supplementary Figure 3E

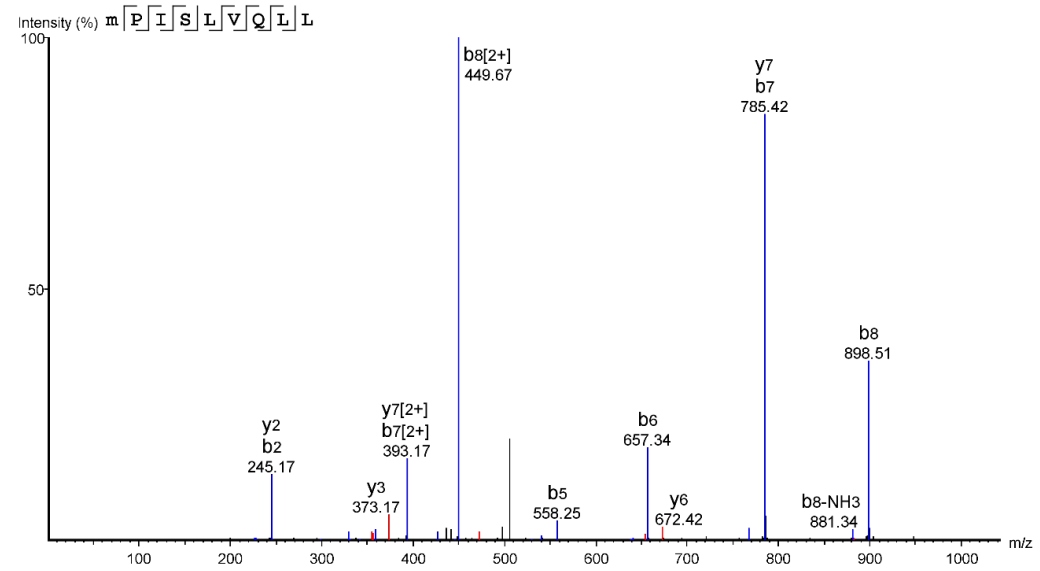
Synthetic reference peptide



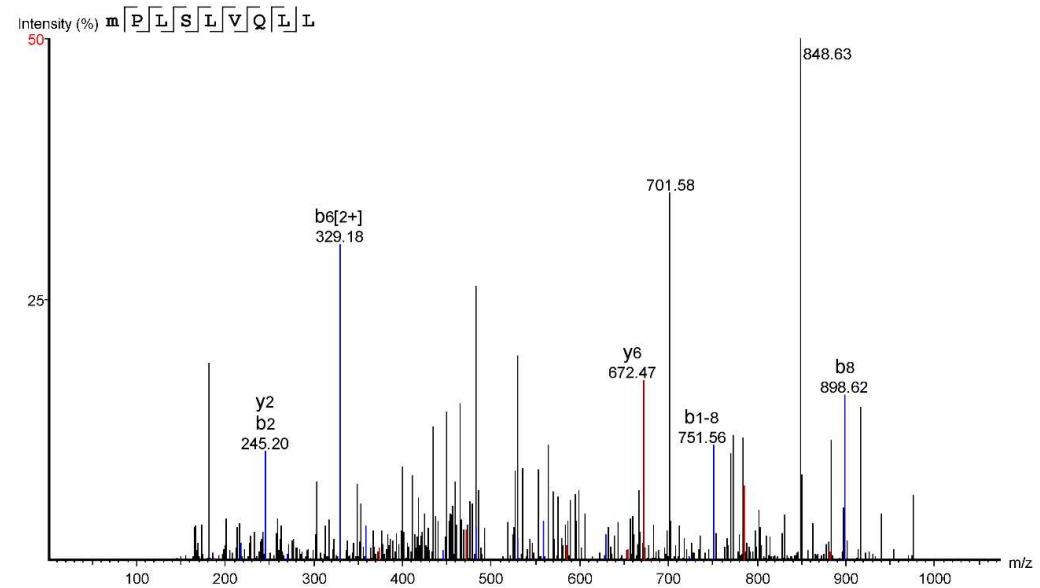
Original peptide



## Supplementary Figure 3F



Synthetic reference peptide



Original peptide

## Supplementary Figure 3

Supplementary Figure 3A-F: Fragment ion spectra of cryptic HLA-I peptides identified from AT/RT samples in comparison to reference spectra generated from the corresponding synthetic peptides. HLA peptides from AT/RT samples were analyzed on an Orbitrap XL applying collisional-induced dissociation (CID) in the ion trap. Reference spectra were analyzed on an Orbitrap Velos Pro applying ion trap CID. On both instruments fragment ion spectra were recorded with the ion trap.