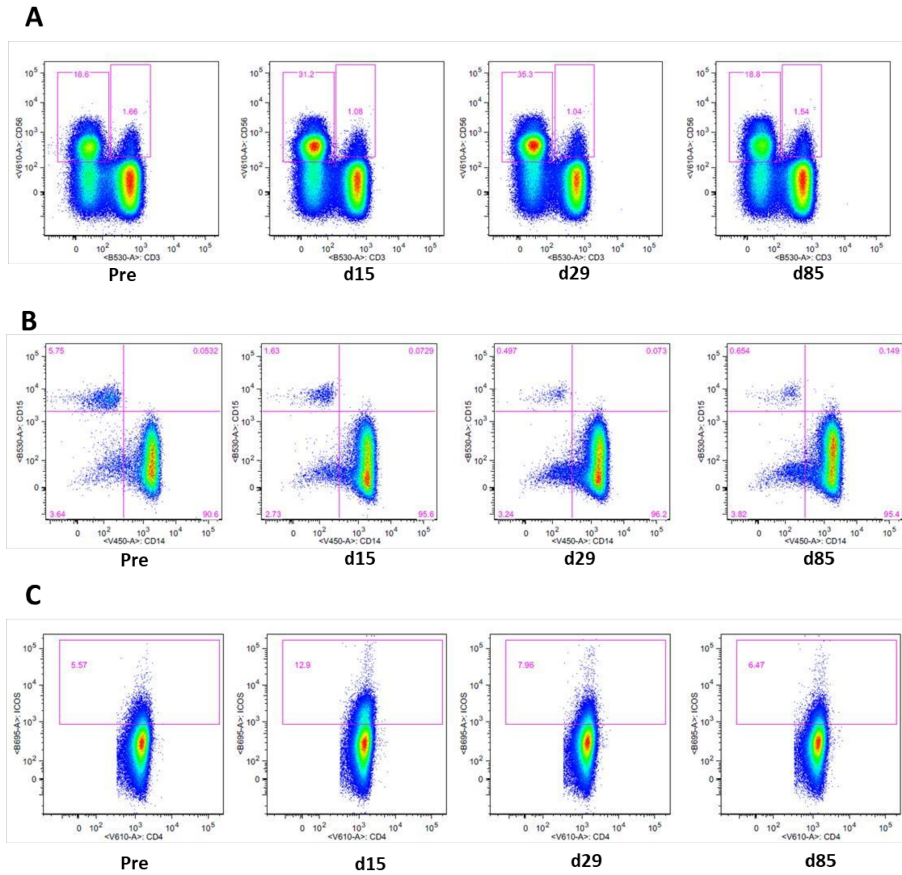


Supplemental Figure 3: Representative flow cytometry plots of notable subsets that change with therapy



Supplemental Figure 3: Representative flow cytometry plots of notable subsets changing significantly with therapy. (A) An increase in NK cells and (B) decrease in granulocytic MDSC (CD15+ CD14-) in a patient treated with Enzalutamide alone. (C) An increase in ICOS+ CD4 in a patient treated with Enzalutamide + Vaccine.