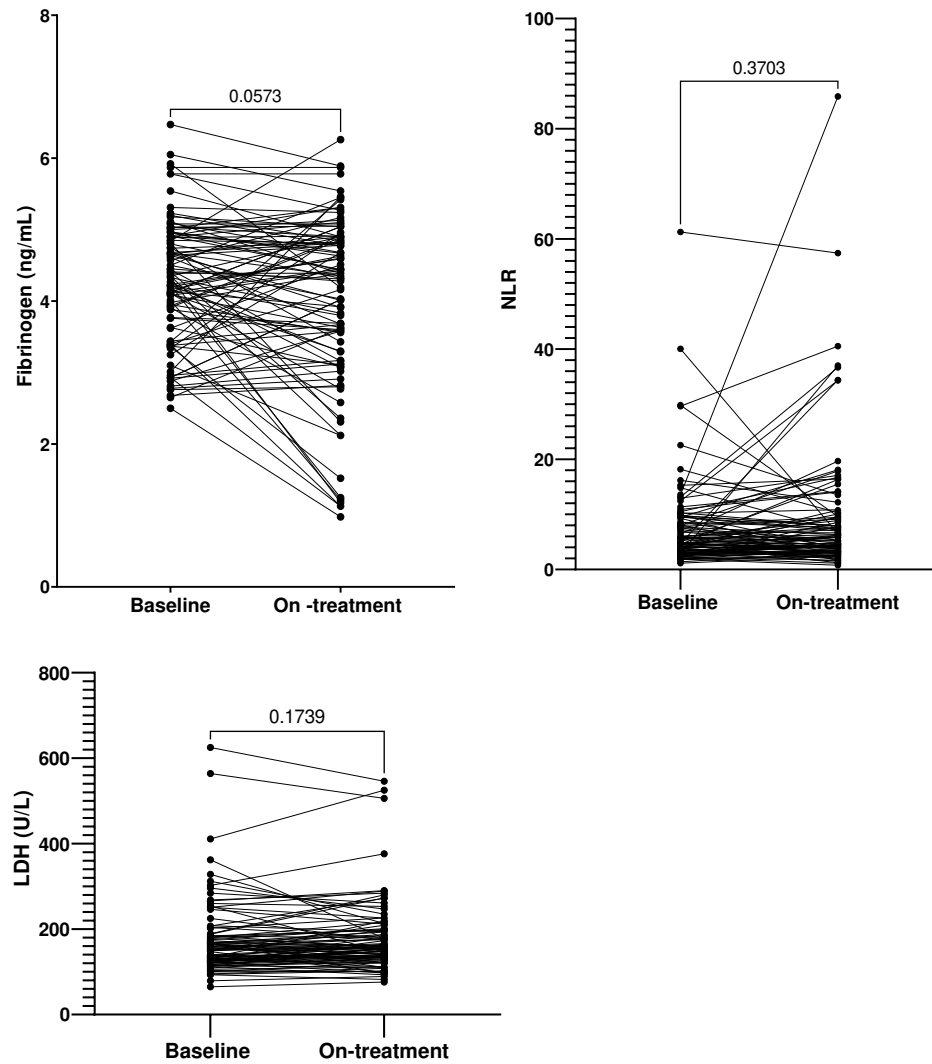
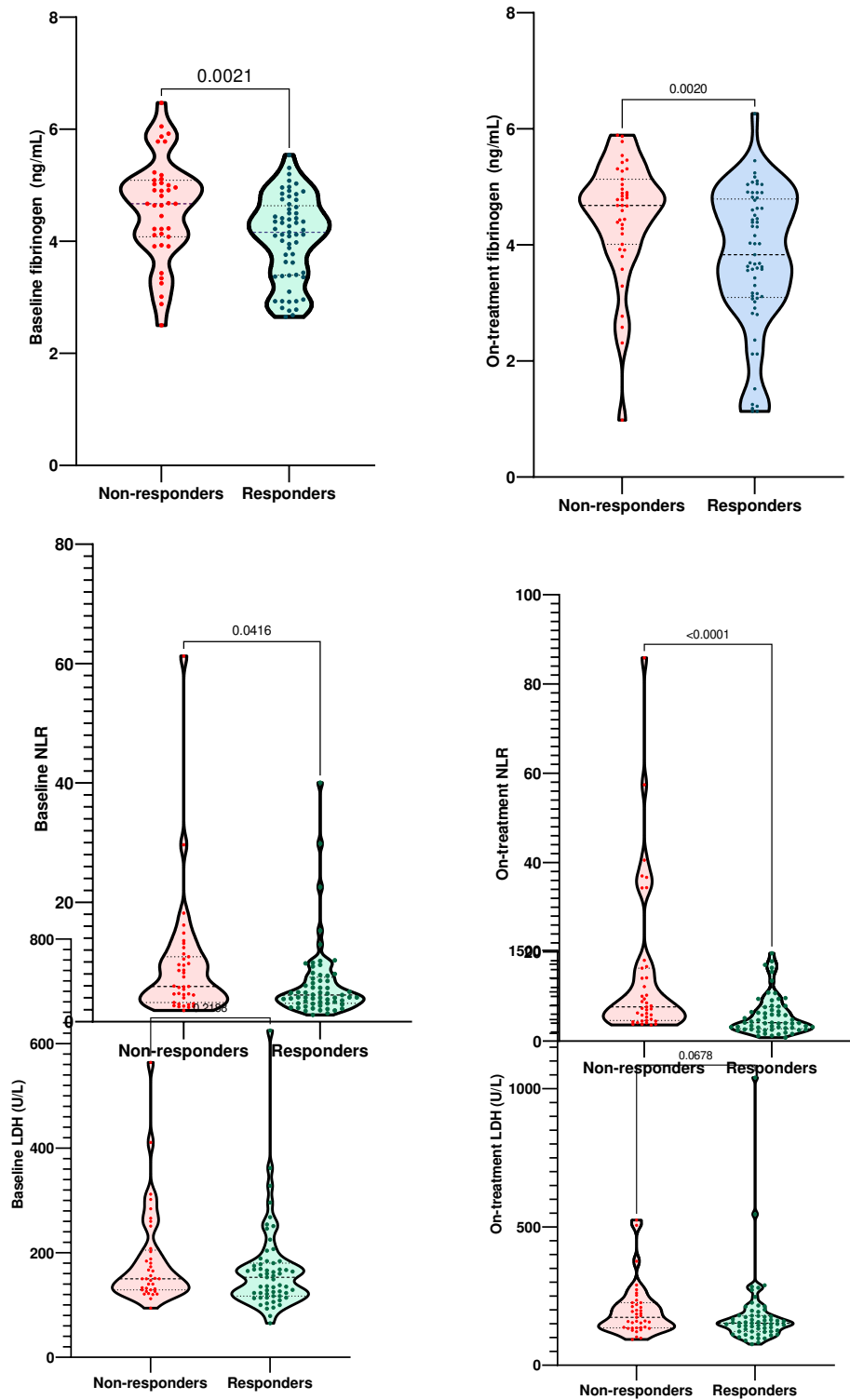


**Supplementary material****Figure 1S. Matched pair changes in fibrinogen, NLR and LDH levels from baseline to on-treatment time-point (Wilcoxon matched pair signed rank test *P* values are shown)**

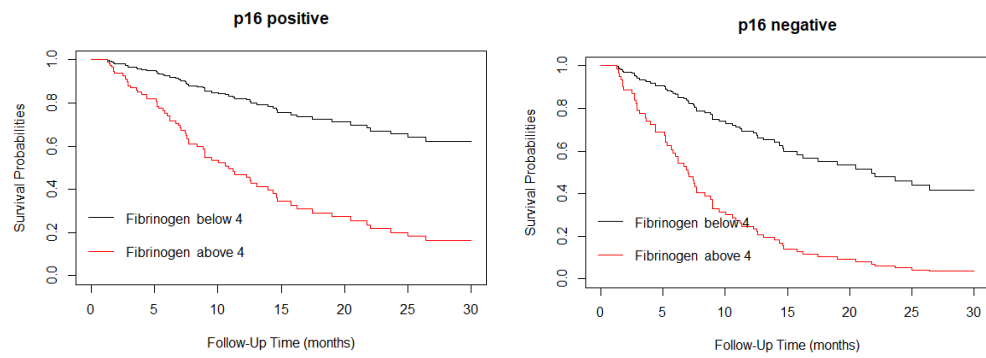
**Figure 2S. Violin plots of response to treatment by baseline and on-treatment fibrinogen, NLR and LDH levels and response (Mann-Whitney  $P$  values are shown).**



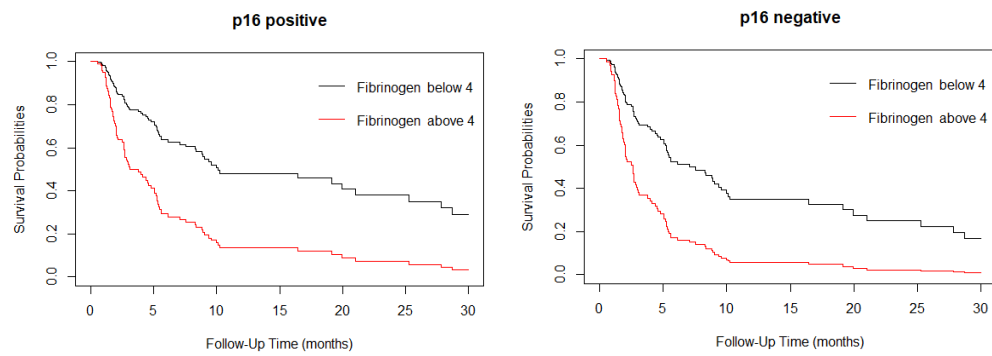


**Figure 3S. Sensitivity curves of overall survival and progression-free survival probability of on-treatment fibrinogen (cut-off = 4) by p16 status.**

**A. Overall survival probabilities**



**B. Progression-survival probabilities**



**Figure 4S. Boxplot representing the 5-fold cross-validation accuracy of the model for death (A) and progression (B).**

