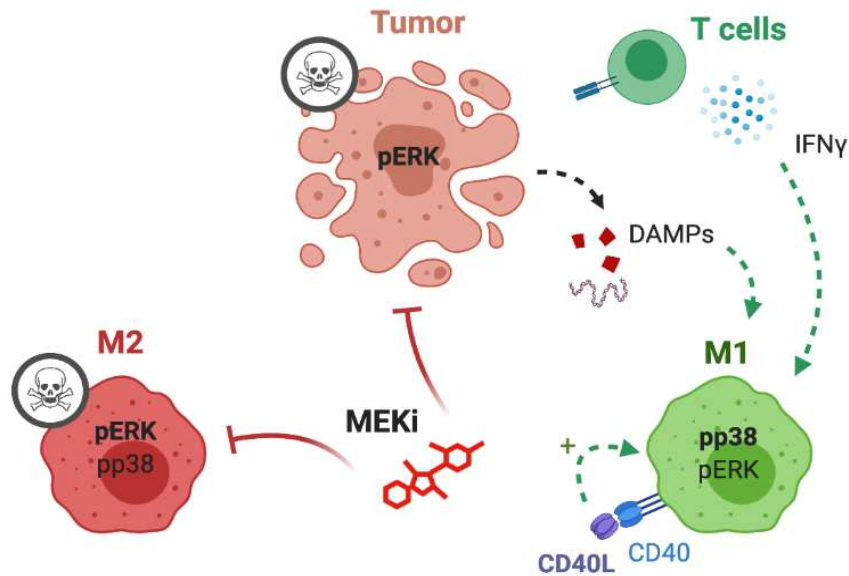


Baumann et al.: P38 MAPK signaling in M1 macrophages results in selective elimination of M2 macrophages by MEK inhibition

Graphical Abstract



created with BioRender.com

Highlights:

- MEK inhibitors (MEKi) eliminate M2 macrophages with similar efficacy as Kras-driven PDAC tumor cells
- M1 macrophages are resistant to MEKi-induced killing
- p38 MAPK signaling acts as a compensatory survival pathway for M1 macrophages