

CX-072 (pacmilimab), a Probody[®] PD-L1 inhibitor, in advanced or recurrent solid tumors (PROCLAIM-CX-072): an open-label dose-finding and first-in-human study

Aung Naing ¹, Fiona Thistlethwaite,² Elisabeth G.E. De Vries,³ Ferry A.L.M. Eskens,⁴ Nataliya Uboha,⁵ Patrick A. Ott,⁶ Patricia LoRusso,⁷ Javier Garcia-Corbacho,⁸ Valentina Boni,⁹ Johanna Bendell,¹⁰ Karen A. Autio,¹¹ Manreet Randhawa,¹² Greg Durm,¹³ Marta Gil-Martin,¹⁴ Mark Stroh,¹⁵ Alison L. Hannah,¹⁵ Hendrik-Tobias Arkenau,¹⁶ Alexander Spira ¹⁷

To cite: Naing A, Thistlethwaite F, De Vries EG.E, *et al.* CX-072 (pacmilimab), a Probody[®] PD-L1 inhibitor, in advanced or recurrent solid tumors (PROCLAIM-CX-072): an open-label dose-finding and first-in-human study. *Journal for ImmunoTherapy of Cancer* 2021;9:e002447. doi:10.1136/jitc-2021-002447

► Additional online supplemental material is published online only. To view, please visit the journal online (<http://dx.doi.org/10.1136/jitc-2021-002447>).

Accepted 27 May 2021



► <http://dx.doi.org/10.1136/jitc-2021-002447>



© Author(s) (or their employer(s)) 2021. Re-use permitted under CC BY-NC. No commercial re-use. See rights and permissions. Published by BMJ.

For numbered affiliations see end of article.

Correspondence to

Dr Aung Naing;
anaing@mdanderson.org

ABSTRACT

Background Probody[®] therapeutics are antibody prodrugs that are activated in the tumor microenvironment by tumor-associated proteases, thereby restricting the activity to the tumor microenvironment and minimizing ‘off-tumor’ toxicity. We report dose-escalation and single-agent expansion phase data from the first-in-human study of CX-072 (pacmilimab), a Probody checkpoint inhibitor directed against programmed death-ligand 1 (PD-L1).

Methods In the dose-escalation phase of this multicenter, open-label study (NCT03013491), adults with advanced solid tumors (naïve to programmed-death-1/PD-L1 or cytotoxic T-lymphocyte-associated antigen 4 inhibitors) were enrolled into one of seven dose-escalation cohorts, with pacmilimab administered intravenously every 14 days. The primary endpoints were safety and determination of the maximum tolerated dose (MTD). In the expansion phase, patients with one of six prespecified malignancies (triple-negative breast cancer [TNBC]; anal squamous cell carcinoma [aSCC]; cutaneous SCC [cSCC]; undifferentiated pleomorphic sarcoma [UPS]; small bowel adenocarcinoma [SBA]; and thymic epithelial tumor [TET]); or high tumor mutational burden (hTMB) tumors were enrolled. The primary endpoint was objective response (Response Evaluation Criteria In Solid Tumors v1.1).

Results An MTD was not reached with doses up to 30 mg/kg. A recommended phase 2 dose (RP2D) of 10 mg/kg was chosen based on pharmacokinetic and pharmacodynamic findings in the expansion phase. Ninety-eight patients enrolled in the expansion phase: TNBC (n=14), aSCC (n=14), cSCC (n=14), UPS (n=20), SBA (n=14), TET (n=8), and hTMB tumors (n=14). Of 114 patients receiving pacmilimab at the RP2D, grade ≥3 treatment-related adverse events (TRAEs) were reported in 10 patients (9%), serious TRAEs in six patients (5%), and treatment discontinuation due to TRAEs in two patients (2%). Grade ≥3 immune-related AEs occurred in two patients (rash, myocarditis). High PD-L1 expression (ie, >50% Tumor Proportion Score) was observed in 22/144 (19%) patients. Confirmed objective responses were observed in patients

with cSCC (n=5, including one complete response), hTMB (n=4, including one complete response), aSCC (n=2), TNBC (n=1), UPS (n=1), and anaplastic thyroid cancer (n=1).

Conclusions Pacmilimab can be administered safely at the RP2D of 10 mg/kg every 14 days. At this dose, pacmilimab had a low rate of immune-mediated toxicity and showed signs of antitumor activity in patients not selected for high PD-L1 expression.

Trial registration number NCT03013491.

INTRODUCTION

The emergence of monoclonal antibodies directed against programmed-death-1 (PD-1) and programmed-death ligand-1 (PD-L1) has resulted in substantial clinical benefit, including improved overall survival in patients with an increasing range of solid tumors.^{1–6} Despite these considerable advances, dose-limiting—and occasionally fatal—immune-related adverse events (irAEs) reflecting non-tumor-specific immune system activation have been frequently reported. In a systematic review and meta-analysis of 13 randomized controlled trials involving more than 6000 patients receiving anti-PD-1/PD-L1 therapies, increased risk compared with standard therapies was reported for a range of irAEs, including hypothyroidism (odds ratio [OR]=6.92), pneumonitis (OR=5.37), colitis (OR=2.88), and hypophysitis (OR=3.88).⁷ While not common, despite appropriate management, irAEs can lead to death.⁸ Moreover, irAEs often necessitate treatment interruptions or discontinuation and prolonged use of steroids, conceivably reducing anti-tumor efficacy.⁹ Therefore PD-1/

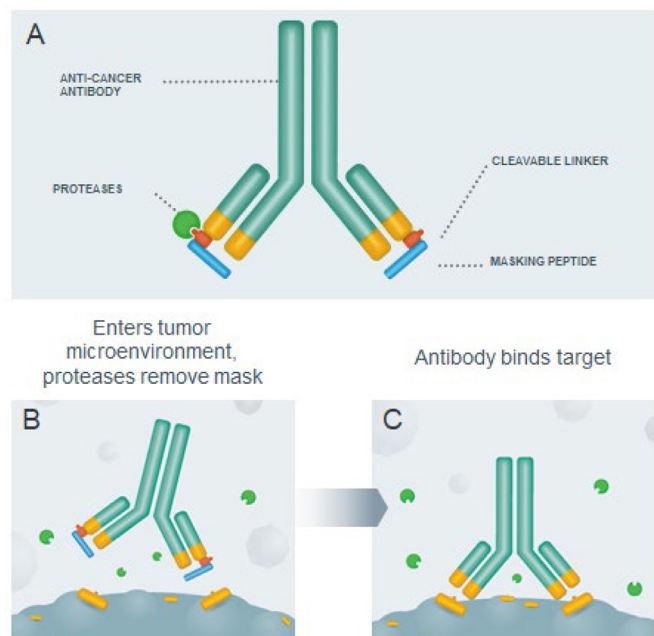


Figure 1 (A) Probody antibodies like pacmilimab comprise an anti-cancer antibody, a cleavable linker, and a masking peptide. (B) The Probody antibody enters the tumor microenvironment where tumor-associated proteases remove the masking peptide by cleaving the linker. (C) The unmasked antibody then selectively binds its target.

PD-L1-targeted therapies with improved tolerability and safety are needed.

Probody[®] therapeutics are novel therapeutics designed to improve the safety and tolerability profile of monoclonal antibodies, antibody–drug conjugates, and other antibody-based therapies. These fully recombinant monoclonal antibody prodrugs comprise an active antibody (or antibody fragment) component, a masking peptide, and a protease-cleavable substrate linker peptide (figure 1). Exploiting the dysregulated protease activity in cancer cells, Probody therapeutics remain largely intact—and thus inactive—in the circulation, whereas in the tumor microenvironment, the masking peptide linker is cleaved by proteases allowing antibody binding to the target antigen expressed on the tumor.^{10–12}

CX-072 (pacmilimab) is a Probody therapeutic directed against PD-L1. In preclinical studies, pacmilimab induced antitumor responses comparable to those of the same dose of the parental antibody in mice bearing MC38 tumors.¹³ Pacmilimab accumulated in murine PD-L1-expressing tumors with minimal uptake in peripheral, non-cancerous lymphoid tissue, consistent with limited uptake in non-tumor PD-L1-expressing tissues and protection against autoimmunity.¹⁴ Data from translational studies evaluating on-treatment biopsies from patients with cancer showed that pacmilimab functioned as designed, with proteolytic activation of pacmilimab, expansion of intratumoral CD8⁺ T cells, and increased markers of T-cell activation, thereby demonstrating proof of mechanism.¹⁵

PROCLAIM-CX-072 (PRObody CLinical Assessment In Man, CX-072 Clinical Trial 001; NCT03013491), the first-in-human proof-of-concept study of pacmilimab, determined appropriate dosing and evaluated tolerability and preliminary antitumor efficacy of pacmilimab in patients with advanced, unresectable solid tumors. Here, we report safety and efficacy data of single-agent pacmilimab in a large, open-label, dose-finding proof-of-concept study in patients with selected advanced malignancies.

METHODS

Study design and participants

In this open-label study, immunotherapy-naïve patients with advanced, unresectable solid tumors were recruited at 32 sites in the USA, The Netherlands, Poland, Spain, Ukraine, and UK. The study included three parallel cohorts that evaluated single-agent pacmilimab: dose-escalation cohorts to evaluate safety and to determine the maximum tolerated dose (MTD) and an expansion cohort to establish preliminary antitumor activity in selected malignancies.

Eligible patients were aged ≥ 18 years with Eastern Cooperative Oncology Group performance status 0 or 1, with an anticipated life expectancy of ≥ 3 months. Patients in the dose-escalation phase were required to have metastatic or advanced unresectable solid tumors (measurable or non-measurable disease) for which no standard therapy was available and to be PD-1/PD-L1- and cytotoxic T-lymphocyte-associated antigen 4 (CTLA-4) inhibitor-naïve. Patients with treated brain metastases were eligible if the brain metastases were stable and the patient did not require radiation therapy or steroids. Patients in the biomarker dose-escalation cohort were required to have tumors suitable for biopsy. To be enrolled into this group, patients were required to have tumors with PD-L1 expression $\geq 1\%$, which was defined as Tumor Proportion Score (TPS) $\geq 1\%$ membrane staining using the DAKO PD-L1 IHC 22C3 pharmDx assay (Agilent Technologies, Santa Clara, California, USA). PD-L1 expression was not required for enrollment in any other cohort.

Patients in the expansion phase were required to have measurable disease and to be PD-1/PD-L1- and CTLA-4 inhibitor-naïve. Patients with one of seven tumor types were eligible: (1) advanced or metastatic triple-negative breast cancer (TNBC) with documented progression after 1–3 systemic chemotherapy regimens for metastatic disease; (2) unresectable anal squamous cell carcinoma (aSCC) with prior radiation therapy and/or chemotherapy; (3) unresectable cutaneous SCC (cSCC); (4) undifferentiated pleomorphic sarcoma (UPS) with ≥ 1 prior systemic therapy or unresectable, advanced disease with prior standard surgery and/or radiation therapy and TPS $\geq 1\%$ membrane staining or unknown PD-L1 status; (5) small bowel adenocarcinoma (SBA) with 1–3 prior systemic chemotherapy regimens for metastatic or unresectable disease; (6) thymic epithelial tumor (TET) with stage II–IV disease and ≥ 1 prior chemotherapy regimen;

or (7) patients whose tumors had high tumor mutational burden (hTMB), defined as ≥ 16 mutations/megabase in a recent sample using a validated assay and failure or refusal of standard therapy. These tumors were chosen based on a lack of available therapies to treat them at the time of study initiation and evidence in the medical literature of PD-L1 expression or preliminary responses to PD-(L)1-targeted therapies.

Exclusion criteria included prior chimeric antigen receptor T-cell therapy; prolonged QTc interval or use of medications known to cause QT prolongation; chemotherapy or immunotherapy within 2 weeks; prior or current autoimmune disease; history of a medical condition requiring >10 mg daily prednisone (or equivalent) or immunosuppressants; and unresolved grade >1 acute drug toxicity. Patients with TET who had a history of interstitial lung disease were excluded.

PD-L1 expression was determined on archived or biopsied tissue locally using the DAKO PD-L1 IHC 22C3 pharmDx assay. TMB was determined locally using a Clinical Laboratory Improvement Amendments validated assay from a recent tumor tissue or blood sample.

Procedures

In the dose-escalation phase, patients received single-agent pacmilimab (0.03, 0.1, 0.3, 1, 3, 10, and 30 mg/kg) intravenously over 60 min (3–5 min for the 0.03 mg/kg dose; 90 min for the 30 mg/kg dose) every 2 weeks. The dose-limiting toxicity (DLT) assessment period was 28 days. Initially, one patient each was enrolled into the 0.03, 0.1, and 0.3 mg/kg groups, and these patients were eligible for intra-patient dose escalation. Subsequent dose levels followed a 3+3 design. In the biomarker group, six additional patients with PD-L1-positive solid tumors received intravenous single-agent pacmilimab at doses of 0.3 mg/kg, 1 mg/kg, 3 mg/kg, and 10 mg/kg every 2 weeks. Patients in the expansion phase received intravenous pacmilimab at a dose of 10 mg/kg every 2 weeks, until confirmed disease progression or unacceptable toxicity.

Outcomes

AEs were assessed every 2 weeks and were graded using the National Cancer Institute's Common Terminology Criteria for Adverse Events (v.4.03). Biopsies (if performed) occurred during the 28-day screening period and on study day 29. A DLT was defined as grade 2 pneumonitis or ocular toxicity necessitating discontinuation of pacmilimab, any grade 3 central nervous system event, treatment-related grade ≥ 3 AEs (except grade 4 lymphopenia, non-febrile neutropenia, nausea, diarrhea, vomiting, asthenia, or constipation lasting ≤ 48 hours; correctable, asymptomatic electrolyte imbalances; clinically manageable endocrinopathy; or tumor flare). irAEs were predefined as AEs with no clear alternate etiology that required systemic corticosteroid or immunosuppressant treatment within 30 days of onset or that required

the use of systemic hormonal supplementation (online supplemental table 1).

The primary efficacy endpoint was objective response rate (ORR) assessed by Response Evaluation Criteria In Solid Tumors (RECIST) v.1.1. Stable disease was defined according to RECIST v.1.1 and duration of at least 8 weeks was required to be included in the disease control rate. Duration of response (DOR), defined as the time from first documentation of objective response to first documented disease progression by RECIST v.1.1 or death from any cause, was a secondary efficacy endpoint. CT or MRI scans were performed every 8 weeks for 12 months and every 12 weeks thereafter until disease progression. Treatment beyond the first instance of RECIST progressive disease was allowed according to the modified immune-related RECIST criteria.¹⁶ Patients with TNBC with skin lesions had cutaneous lesions photographed at all time points used for tumor assessment. After completing study treatment, patients were followed up every 3 months for survival (patients with progressive disease) or DOR.

Statistical analyses

To observe a sufficient number of objective responses in the dose-expansion phase with 95% probability, 20 patients with UPS and 14 patients with each other cancer type were required. For most tumor types (aSCC, SBA, TET, TNBC, and hTMB), one patient with a confirmed objective response supported further study of single-agent pacmilimab in that tumor type. For UPS and cSCC, a confirmed objective response was required in two and three patients, respectively, for further study. Data from the dose-escalation phase were pooled by dose with data from patients who received ≤ 1 mg/kg combined into a single category. Data from the expansion phase were analyzed by tumor type; statistical summaries were descriptive. Data from the 16 patients in the dose-escalation 10 mg/kg group were included in the dose expansion analyses, for a total of 114 patients. Because patients with TET may be at high risk of irAEs,^{17–19} a separate post hoc safety analysis was conducted for these patients.

Safety data were summarized using the safety population (all patients who received ≥ 1 dose of study drug). The efficacy population comprised all patients who received ≥ 1 dose of study drug and who had measurable disease at baseline. Tumor response was analyzed per RECIST v.1.1, using exact two-sided 95% CI for all proportion estimates. Kaplan-Meier analyses were used to estimate DOR, with median duration and 95% CI based on the Brookmeyer and Crowley method.²⁰

RESULTS

Patients were enrolled between January 19, 2017, and September 16, 2019; data are reported as of August 28, 2020. In the dose-escalation phase, a total of 53 patients enrolled: ≤ 1 mg/kg (n=21), 3 mg/kg (n=13), 10 mg/kg (n=16), and 30 mg/kg (n=3). Reasons for treatment discontinuation in the dose-escalation phase were

Table 1 Baseline patient and disease characteristics

	Dose-escalation phase (n=53)	Dose-escalation phase pacmilimab 10mg group (n=16)	Expansion phase						
			TNBC (n=14)	Anal SCC (n=14)	cSCC (n=14)	UPS (n=20)	SBA (n=14)	TET (n=8)	hTMB (n=14)
Median age, years (range)	61 (22–81)	57 (32–81)	56 (32–72)	64 (36–80)	70 (58–83)	63 (33–80)	55 (34–67)	52 (35–65)	61 (48–83)
Sex, n (%)									
Male	25 (47)	7 (44)	0	2 (14)	7 (50)	12 (60)	8 (57)	7 (88)	2 (14)
Female	28 (53)	9 (56)	14 (100)	12 (86)	7 (50)	8 (40)	6 (43)	1 (13)	12 (86)
Race, n (%)									
White	44 (83)	15 (94)	7 (50)	10 (71)	11 (79)	16 (80)	9 (64)	5 (63)	9 (64)
Black	1 (2)		2 (14)	0	0	2 (10)	2 (14)	2 (25)	0
Asian	1 (2)		0	0	0	1 (5)	0	1 (13)	0
Unknown/other	7 (13)	1 (6)	5 (36)	4 (29)	3 (21)	1 (5)	3 (21)	0	5 (36)
ECOG PS, n (%)									
0	23 (43)	10 (63)	6 (43)	9 (64)	6 (43)	1 (5)	6 (43)	3 (38)	5 (36)
1	30 (57)	6 (38)	8 (57)	5 (36)	8 (57)	19 (95)	8 (57)	5 (63)	9 (64)
Median no. of prior cancer treatments (range)	2.0 (0–11.0)	2.0 (0–5.0)	3.0 (1.0–7.0)	2.0 (1.0–5.0)	0.5 (0–4.0)	2.5 (0–6.0)	3.0 (1.0–6.0)	2.5 (1.0–7.0)	4.5 (0–12.0)
PD-L1 expression status,* n (%)									
High	12 (23)	5 (31)	0	3 (21)	4 (29)	4 (20)	0	3 (38)	3 (21)
Low	15 (28)	4 (25)	1 (7)	9 (64)	6 (43)	6 (30)	3 (21)	3 (38)	3 (21)
None	18 (34)	5 (31)	13 (93)	2 (14)	2 (14)	9 (45)	11 (79)	1 (13)	6 (43)
Unknown	8 (15)	2 (13)	0	0	2 (14)	1 (5)	0	1 (13)	2 (14)

*Measured prospectively and defined by Tumor Proportion Score (TPS) using the DAKO PD-L1 IHC 22C3 pharmDx assay (Agilent Technologies, Santa Clara, California, USA). High expression was defined as TPS >50% membrane staining, low expression was defined as TPS ≥1% and ≤50% membrane staining, and no expression was defined as TPS <1%.

cSCC, cutaneous squamous cell carcinoma; hTMB, high tumor mutational burden; PD-L1, programmed death ligand-1; ECOG PS, Eastern Cooperative Oncology Group performance status; SBA, small bowel adenocarcinoma; SCC, squamous cell carcinoma; TET, thymic epithelial tumor; TNBC, triple-negative breast cancer; UPS, undifferentiated pleiomorphic sarcoma.

symptomatic deterioration (defined as clinical signs of disease progression in the absence of confirmed radiographic evidence; 29 [54.7%]), disease progression (13 [24.5%]), treatment-related AEs (6 [11.3%]), investigator decision (2 [3.8%]), and patient decision (2 [3.8%]). As of the cut-off date, one patient from this study phase remained on study on active treatment. A further 98 patients were enrolled in the expansion phase: 14 patients with TNBC, 14 with aSCC, 14 with cSCC, 20 with UPS, 14 with SBA, 8 with TET, and 14 with hTMB. Reasons for treatment discontinuation in these patients included symptomatic deterioration not confirmed as disease progression (46 [46.9%]), disease progression (28 [28.6%]), patient decision (7 [7.1%]), AE (2 [2.0%]), death due to disease progression (2 [2.0%]), pregnancy (1 [1.0%]), and discontinuing the parent study to enroll in the long-term extension study (1 [1.0%]). As of the cut-off date, 11 of these patients remained on study on active treatment.

Patient and disease characteristics are shown in [table 1](#). Tumor types in the dose-escalation phase included TET (n=10); castration-resistant prostate cancer (n=4), cervical carcinoma (n=4), esophageal carcinoma (n=4),

colon carcinoma (n=3), pancreatic carcinoma (n=3), uterine carcinoma (n=3), rectal carcinoma (n=3), aSCC (n=2), TNBC (n=2), ovarian carcinoma (n=2), uterine sarcoma (n=2), and other (n=11). In the dose-escalation phase (n=53), patients had received a median of two prior cancer regimens (range: 0–11). PD-L1 expression was high (defined as >50% TPS) in 23%, low (≥1% and ≤50% TPS) in 28%, absent (<1% TPS) in 34%, and unknown in 15% of patients. In patients treated at the recommended phase 2 dose (n=114), PD-L1 expression was high in 19%, low in 31%, absent in 43%, and unknown in 7% of patients. The median number of prior regimens ranged from 0.5 (cSCC) to 4.5 (hTMB tumors) among tumor types, with the median number of prior regimens being two to three for most tumor types. PD-L1 expression varied by tumor type, with the highest expression in TET (38% with high PD-L1 expression) and the lowest expression in TNBC and SBA (no expression in 93% and 79%, respectively).

In the dose-escalation phase, the median duration of pacmilimab treatment was 2.3 months (range: 0.5–28.0 months). Two patients experienced DLTs (one patient with grade 4 infusion-related reaction treated with

Table 2 AEs in dose-escalation phase

N (%)	Pacmilimab ≤1 mg/kg (n=21)	Pacmilimab 3 mg/kg (n=13)	Pacmilimab 10 mg/kg (n=16)	Pacmilimab 30 mg/kg (n=3)	Total (n=53)
Treatment-emergent AEs in ≥10% of patients (all severity grades)					
Fatigue	6 (29)	4 (31)	6 (38)	0	16 (30)
Decreased appetite	8 (38)	3 (23)	4 (25)	0	15 (28)
Nausea	5 (24)	5 (38)	4 (25)	0	14 (26)
Cough	4 (19)	4 (31)	4 (25)	1 (33)	13 (25)
Constipation	6 (29)	4 (31)	2 (13)	0	12 (23)
Anemia	2 (10)	4 (31)	4 (25)	2 (67)	12 (23)
Infusion-related reaction	5 (24)	3 (23)	3 (19)	0	11 (21)
Back pain	3 (14)	3 (23)	3 (19)	1 (33)	10 (19)
Dyspnea	1 (5)	4 (31)	4 (25)	0	9 (17)
Arthralgia	2 (10)	2 (15)	2 (13)	2 (67)	8 (15)
Fever	3 (14)	1 (8)	3 (19)	1 (33)	8 (15)
Diarrhea	1 (5)	1 (8)	4 (25)	1 (33)	7 (13)
Headache	3 (14)	1 (8)	3 (19)	0	7 (13)
Increased blood alkaline phosphatase	2 (10)	0	3 (19)	1 (33)	6 (11)
Dizziness	2 (10)	2 (15)	2 (13)	0	6 (11)
Hyponatremia	3 (14)	1 (8)	2 (13)	0	6 (11)
Pain in extremity	2 (10)	2 (15)	2 (13)	0	6 (11)
Pruritus	3 (14)	0	2 (13)	1 (33)	6 (11)
Treatment-related AEs in ≥5% of patients (all severity grades)					
Patients with at least 1	10 (48)	8 (62)	11 (69)	3 (100)	32 (60)
Infusion-related reaction	5 (24)	3 (23)	3 (19)	0	11 (21)
Fatigue	3 (14)	1 (8)	4 (25)	0	8 (15)
Arthralgia	0	1 (8)	2 (13)	2 (67)	5 (9)
Myalgia	1 (5)	0	2 (13)	1 (33)	4 (8)
Pruritus	2 (10)	0	1 (6)	0	3 (6)
Fever	1 (5)	0	1 (6)	1 (33)	3 (6)
Immune-related AEs in ≥1 patient (all severity grades)					
Patients with at least 1 irAE	2 (10)	2 (15)	1 (6)	1 (33)	6 (11)
Hypothyroidism	1 (5)	0	1 (6)	0	2 (4)
Febrile neutropenia	0	1 (8)	0	0	1 (2)
Thrombocytopenia	0	1 (8)	0	0	1 (2)
Alanine aminotransferase increased	0	0	0	1 (33)	1 (2)
Aspartate aminotransferase increased	0	0	0	1 (33)	1 (2)
Pneumonitis	0	1 (8)	0	0	1 (2)
Serious AEs in >1 patient (all severity grades)					
Diarrhea	0	0	2 (13)	0	2 (4)
Infusion-related reaction	1 (5)	0	1 (6)	0	2 (4)
Lower respiratory tract infection	1 (5)	1 (8)	0	0	2 (4)
Grade 3–4 treatment-related AEs					
Patients with at least 1	1 (5)	4 (31)	2 (13)	1 (33)	8 (15)

Continued

Table 2 Continued

N (%)	Pacmilimab ≤1 mg/kg (n=21)	Pacmilimab 3 mg/kg (n=13)	Pacmilimab 10 mg/kg (n=16)	Pacmilimab 30 mg/kg (n=3)	Total (n=53)
Alanine aminotransferase increased	0	0	0	1 (33)	1 (2)
Anemia	0	1 (8)	0	0	1 (2)
Aspartate aminotransferase increased	0	0	0	1 (33)	1 (2)
Thrombocytopenia	0	1 (8)	0	0	1 (2)
Amylase increased	0	1 (8)	0	0	1 (2)
Epistaxis	0	0	1 (6)	0	1 (2)
Febrile neutropenia	0	1 (8)	0	0	1 (2)
γ-glutamyltransferase increased	0	0	1 (6)	0	1 (2)
Infusion-related reaction	1 (5)	0	0	0	1 (2)
Pneumonitis	0	1 (8)	0	0	1 (2)
Stress cardiomyopathy	1 (5)	0	0	0	1 (2)

AE, adverse event; irAE, immune-related adverse events.

1 mg/kg; one patient with grade 3 febrile neutropenia treated with 3 mg/kg), but an MTD was not reached. In the absence of an MTD, the 10 mg/kg dose level was selected as the recommended phase 2 dose based on overall tolerability in addition to pharmacokinetic and pharmacodynamic considerations.²¹ The AE profile in the dose-escalation phase is summarized in [table 2](#) and detailed in online supplemental tables 2 and 3. Grade 3–4 treatment-related AEs were observed in eight patients (15%), with no AE occurring in more than one patient. All-grade irAEs occurred in six patients (11%). Three of these patients had grade 3–4 irAEs: febrile neutropenia and thrombocytopenia in one patient (3 mg/kg group), alanine aminotransferase increase and aspartate aminotransferase increase in one patient (30 mg/kg group), and pneumonitis in one patient (3 mg/kg group). Serious AEs observed in >1 patient were diarrhea (10 mg/kg; n=2, 1 was grade 2 and 1 was grade 3), infusion-related reaction (≤1 mg/kg and 10 mg/kg; n=2, 1 was grade 2 and 1 was grade 4), and lower respiratory tract infection (≤1 mg/kg and 3 mg/kg; n=2, both were grade 3). In the dose-escalation phase, seven patients (13%) experienced AEs leading to treatment discontinuation; no AEs led to death.

Among all patients who received pacmilimab 10 mg/kg (n=114), the median duration of exposure was 3.0 months (range: 0.5–28.7 months). The safety profile is shown in [table 3](#) and detailed in online supplemental tables 4 and 5. Grade 3–4 treatment-related AEs were observed in 10 (9%) patients: increased gamma glutamyl transferase (2%), increased lipase (2%), fatigue (1%), increased aspartate aminotransferase (1%), maculopapular rash (1%), enterocutaneous fistula (1%), hypertension (1%), and myocarditis (1%). All-grade irAEs occurred in 17 patients (15%). Only two events were grade 3–4: maculopapular rash (n=1) and myocarditis (n=1). Serious AEs

were observed in 40 patients (35%); those observed in >1 patient are listed in [table 3](#). Grade 3–4 serious AEs occurring in more than two patients were pneumonia (n=5, 4%), pericardial effusion (n=3, 3%) and sepsis (n=3, 3%). Six serious AEs were considered related to pacmilimab, including two that were grade 3–4 serious AEs (grade 3 myocarditis and grade 3 enterocutaneous fistula). Four patients (4%) had AEs leading to treatment discontinuation, and in two patients they were treatment-related (myocarditis and gamma-glutamyltransferase increased). No patients had AEs resulting in death.

Compared with other tumor types, patients with TET had a greater incidence of all-grade (70% vs 57%) and grade 3–4 treatment-related AEs (30% vs 9%). The incidence of irAEs in the TET subgroup was similar to that in other tumor types (10% vs 15%).

Response data for patients treated with pacmilimab 10 mg/kg are summarized in [table 4](#). The overall ORR across tumor types was 12%. The highest ORRs were 36% observed in patients with cSCC and 29% observed in patients with hTMB. The disease control rate in all patients treated at 10 mg/kg (defined as stable disease or better) was 42%. The disease control rates ranged from 14% to 71%, depending on the tumor type. There were two complete responses, one in a patient with cSCC and one in a patient with an hTMB tumor (aSCC). One partial response was observed in the dose-escalation phase (n=53) in a patient with anaplastic thyroid cancer who received pacmilimab 10 mg/kg; no responses were observed in patients in the other dose-level groups. Among the 14 patients with objective responses, 12 remained on study as of the data cut-off, and 10 patients had responses lasting more than 12 months. Pseudoprogression defined by disease response (irRECIST criteria) following the first instance of RECIST v1.1 disease progression was also observed in two patients treated with pacmilimab

Table 3 AEs at pacmilimab 10 mg/kg in dose-escalation and expansion phases

n (%)	Dose-escalation phase (n=16)	TNBC (n=14)	Anal SCC (n=14)	cSCC (n=14)	UPS (n=20)	SBA (n=14)	TET (n=8)	hTMB (n=14)	Pacmilimab 10mg/kg Total (n=114)
Treatment-emergent AEs in ≥10% of patients (all severity grades)									
Fatigue	6 (38)	4 (29)	3 (21)	7 (50)	5 (25)	6 (43)	3 (38)	4 (29)	38 (33)
Diarrhea	4 (25)	3 (21)	1 (7)	6 (43)	6 (30)	4 (29)	1 (13)	5 (36)	30 (26)
Anemia	4 (25)	1 (7)	4 (29)	3 (21)	7 (35)	3 (21)	3 (38)	3 (21)	28 (25)
Decreased appetite	4 (25)	1 (7)	3 (21)	7 (50)	4 (20)	3 (21)	2 (25)	4 (29)	28 (25)
Nausea	4 (25)	6 (43)	1 (7)	4 (29)	1 (5)	4 (29)	1 (13)	6 (43)	27 (24)
AST increased	0	5 (36)	5 (36)	1 (7)	3 (15)	4 (29)	1 (13)	4 (29)	23 (20)
Vomiting	3 (19)	2 (14)	2 (14)	3 (21)	3 (15)	3 (21)	1 (13)	5 (36)	22 (19)
Cough	4 (25)	4 (29)	1 (7)	1 (7)	4 (20)	2 (14)	4 (50)	0	20 (18)
Dyspnea	4 (25)	2 (14)	2 (14)	1 (7)	4 (20)	1 (7)	2 (25)	3 (21)	19 (17)
Arthralgia	2 (13)	4 (29)	0	4 (29)	3 (15)	1 (7)	0	2 (14)	16 (14)
Constipation	2 (13)	0	3 (21)	2 (14)	2 (10)	2 (14)	2 (25)	3 (21)	16 (14)
ALT increased	1 (6)	1 (7)	3 (21)	1 (7)	3 (15)	3 (21)	1 (13)	2 (14)	15 (13)
Fever	3 (19)	4 (29)	0	1 (7)	3 (15)	1 (7)	1 (13)	2 (14)	15 (13)
Headache	3 (19)	3 (21)	0	2 (14)	4 (20)	0	0	2 (14)	14 (12)
Back pain	3 (19)	3 (21)	2 (14)	2 (14)	1 (5)	0	1 (13)	2 (14)	14 (12)
Rash	1 (6)	2 (14)	0	2 (14)	1 (5)	2 (14)	1 (13)	5 (36)	14 (12)
Blood alkaline phosphatase increased	3 (19)	0	3 (21)	0	3 (15)	1 (7)	2 (25)	1 (7)	13 (11)
Weight decreased	1 (6)	1 (7)	1 (7)	2 (14)	2 (10)	2 (14)	1 (13)	3 (21)	13 (11)
Upper respiratory tract infection	2 (13)	1 (7)	1 (7)	1 (7)	1 (5)	1 (7)	3 (38)	2 (14)	12 (11)
Urinary tract infection	1 (6)	2 (14)	1 (7)	1 (7)	2 (10)	2 (14)	0	2 (14)	11 (10)
Treatment-related AEs in ≥5% of patients (all severity grades)									
Patients with at least 1	11 (69)	10 (71)	8 (57)	9 (64)	5 (25)	5 (36)	6 (75)	12 (86)	66 (58)
Fatigue	4 (25)	2 (14)	1 (7)	5 (36)	1 (5)	3 (21)	2 (25)	0	18 (16)
AST increased	0	2 (14)	4 (29)	1 (7)	2 (10)	2 (14)	1 (13)	3 (21)	15 (13)
ALT increased	0	1 (7)	3 (21)	1 (7)	2 (10)	2 (14)	1 (13)	2 (14)	12 (11)
Infusion-related reaction	3 (19)	1 (7)	2 (14)	2 (14)	0	0	0	1 (7)	9 (8)
Rash	1 (6)	1 (7)	0	1 (7)	1 (5)	1 (7)	0	4 (29)	9 (8)
Arthralgia	2 (13)	2 (14)	0	1 (7)	0	1 (7)	0	2 (14)	8 (7)
Decreased appetite	2 (13)	0	1 (7)	4 (29)	0	1 (7)	0	0	8 (7)
Myalgia	2 (13)	1 (7)	0	0	1 (5)	1 (7)	0	2 (14)	7 (6)
Diarrhea	0	1 (7)	0	2 (14)	1 (5)	0	0	2 (14)	6 (5)
Vomiting	0	1 (7)	0	2 (14)	0	1 (7)	0	2 (14)	6 (5)
Immune-related AEs in ≥1 patient (all severity grades)									
Patients with at least 1	1 (6)	3 (21)	1 (7)	2 (14)	2 (10)	3 (21)	1 (13)	4 (29)	17 (15)
AST increased	0	1 (7)	0	1 (7)	0	2 (14)	0	1 (7)	5 (4)
Hypothyroidism	1 (6)	0	1 (7)	0	1 (5)	1 (7)	0	1 (7)	5 (4)
ALT increased	0	0	0	1 (7)	0	2 (14)	0	1 (7)	4 (4)
Rash	0	0	0	1 (7)	0	1 (7)	0	1 (7)	3 (3)
Maculopapular rash	0	2 (14)	0	0	0	0	0	0	2 (2)
Acute thyroiditis	0	0	0	0	1 (5)	0	0	0	1 (1)
Arthralgia	0	1 (7)	0	0	0	0	0	0	1 (1)
Hyperthyroidism	0	0	0	0	0	0	0	1 (7)	1 (1)
Myocarditis	0	0	0	0	0	0	1 (13)	0	1 (1)

Continued

Table 3 Continued

n (%)	Dose-escalation phase (n=16)	TNBC (n=14)	Anal SCC (n=14)	cSCC (n=14)	UPS (n=20)	SBA (n=14)	TET (n=8)	hTMB (n=14)	Pacmilimab 10mg/kg Total (n=114)
Grade 3–4 treatment-related AEs in >1 patient									
Patients with at least 1	2 (13)	2 (14)	0	0	0	2 (14)	3 (38)	1 (7)	10 (9)
γ-glutamyltransferase increased	1 (6)	1 (7)	0	0	0	0	0	0	2 (2)
Lipase increased	0	0	0	0	0	0	2 (25)	0	2 (2)
AST increased	0	0	0	0	0	0	0	1 (7)	1 (1)
Enterocutaneous fistula	1 (6)	0	0	0	0	0	0	0	1 (1)
Fatigue	0	0	0	0	0	1 (7)	0	0	1 (1)
Hypertension	0	0	0	0	0	1 (7)	0	0	1 (1)
Maculopapular rash	0	1 (7)	0	0	0	0	0	0	1 (1)
Myocarditis	0	0	0	0	0	0	1 (13)	0	1 (1)

AE, adverse event; ALT, alanine aminotransferase; AST, aspartate aminotransferase; cSCC, cutaneous squamous cell carcinoma; hTMB, high tumor mutational burden; SBA, small bowel adenocarcinoma; SCC, squamous cell carcinoma; TET, thymic epithelial tumor; TNBC, triple-negative breast cancer; UPS, undifferentiated pleiomorphic sarcoma.

at 10mg/kg. One of these patients (rectal cancer) later achieved a disease response allowing the patient to undergo successful surgical resection of the tumor; the patient was disease-free at the time of data cut-off.

Changes in target lesions from baseline over time are shown in [figure 2](#) by tumor type. Among responders, decreases in tumor size from baseline were observed in the first 8–16 weeks ([figure 2B](#)) and responses were durable ([figure 2C](#)).

DISCUSSION

This first-in-class, first-in-human study provides evidence of tolerability and clinical activity of single-agent pacmilimab in previously treated patients with advanced or metastatic solid tumors. In the dose-escalation phase,

no MTD was reached. However, a recommended phase 2 dose (10mg/kg; n=114) was identified based on the tolerability profile on chronic administration as reported here, and pharmacokinetic considerations reported separately.²¹ Specifically, pacmilimab 10mg/kg had an estimated half-life of approximately 12 days, and pharmacokinetic simulations suggested that following administration every 2 weeks >95% of patients would be expected to maintain pacmilimab trough levels above the targeted level.²¹

Among patients treated at the recommended phase 2 dose (n=114), the discontinuation rate due to treatment-related AEs was 2%. Preliminary pharmacokinetic data suggest that pacmilimab circulates predominantly (ie, 87%) in the intact, protected form, with minimal evidence

Table 4 Best tumor response per RECIST v.1.1 in evaluable patients* who had at least one post-baseline disease assessment (pacmilimab 10mg/kg dose-escalation and expansion phases)

	Other tumor types (n=12)	TNBC (n=15)	Anal SCC (n=15)	cSCC (n=14)	UPS (n=20)	SBA (n=14)	TET (n=10)	hTMB (n=14)	Pacmilimab 10mg/kg total (n=114)
ORR†, % (95% CI)	8 (0.2–39)	7 (0.2–32.0)	13 (2–41)	36 (13–65)	5 (0.1–25)	0 (0–23)	0 (0–31)	29 (8–58)	12 (7–20)
Complete response, n (%)	0	0	0	1 (7)	0	0	0	1 (7)	2 (2)
Partial response, n (%)	1 (8)	1 (7)	2 (13)	4 (29)	1 (5)	0	0	3 (21)	12 (11)
Stable disease, n (%)	3 (25)	7 (47)	6 (40)	5 (36)	4 (20)	2 (14)	5 (50)	2 (14)	34 (30)
Disease control rate‡, n (%)	4 (33)	8 (53)	8 (53)	10 (71)	5 (25)	2 (14)	5 (50)	6 (43)	48 (42)
Progressive disease, n (%)	7 (58)	5 (33)	7 (47)	4 (29)	12 (60)	9 (64)	4 (40)	5 (36)	53 (47)
Discontinued early§, n (%)	1 (8)	2 (13)	0	0	3 (15)	3 (21)	1 (10)	3 (21)	13 (11)

*Treated patients who had an adequate baseline assessment.

†ORR is the sum of the confirmed partial and complete responses.

‡Disease control rates is the sum of the complete responses, partial responses, and stable disease.

§Patients who discontinued the study without a post-baseline tumor assessment.

cSCC, cutaneous squamous cell carcinoma; hTMB, high tumor mutational burden; ORR, objective response rate; RECIST, Response Evaluation Criteria in Solid Tumors; SBA, small bowel adenocarcinoma; SCC, squamous cell carcinoma; TET, thymic epithelial tumor; TNBC, triple-negative breast cancer; UPS, undifferentiated pleiomorphic sarcoma.

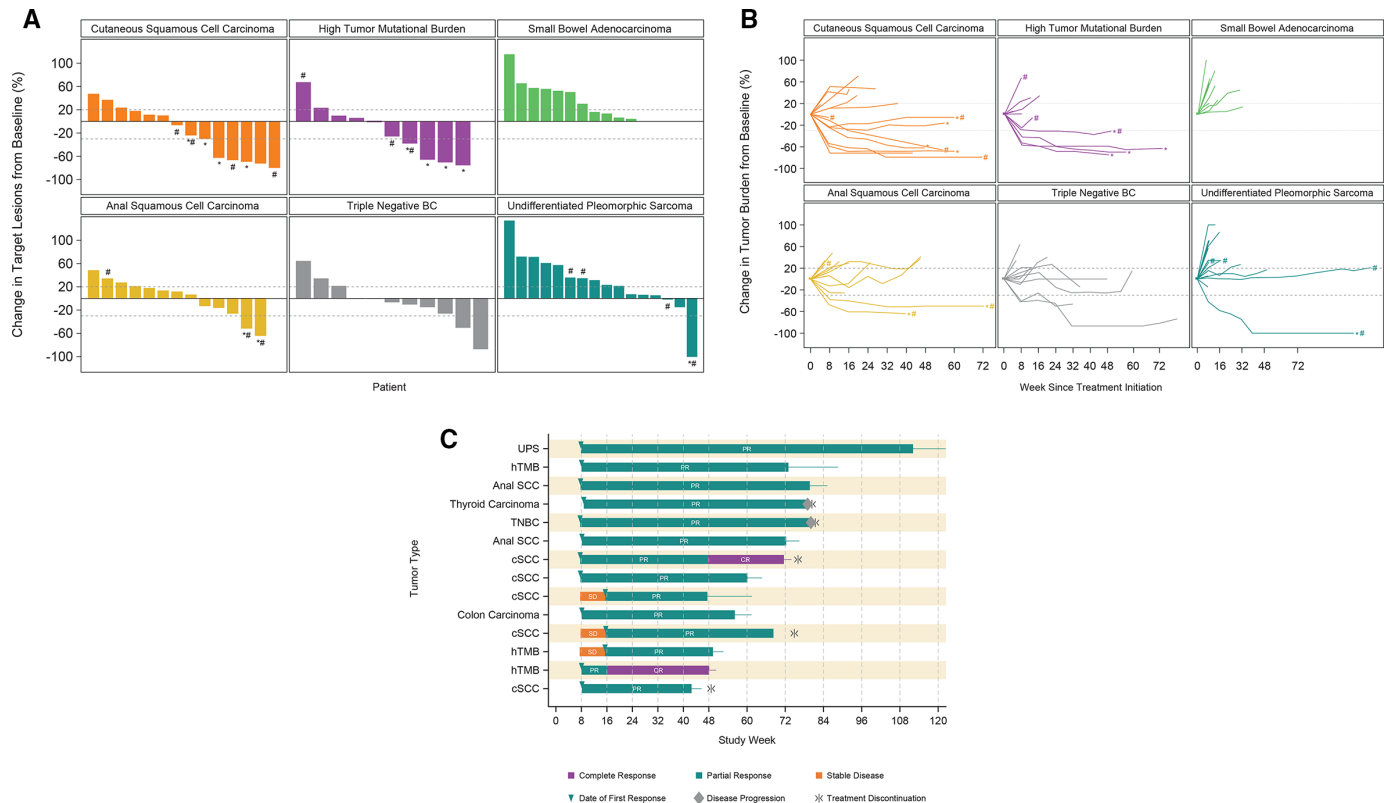


Figure 2 (A) Best percentage change in target lesion size by tumor type during the expansion phase. (B) Change in target lesion burden over time by tumor type during the expansion phase. (C) Duration of response. *Indicates that the patient is still on treatment. #Indicates tumor with high (ie, >50% tumor proportion score) PD-L1 expression

Note: One patient with a high mutational burden tumor and one patient with cutaneous squamous cell carcinoma had a confirmed complete response. Some of the target lesions were lymph nodes, accounting for reduction in target lesion values from baseline of less than 100%. One patient with undifferentiated pleomorphic sarcoma and a confirmed partial response had a complete response in target lesions and non-complete response/non-progressive disease in non-target lesions.

of clearance via peripheral targets (ie, target-mediated drug disposition).²¹ Taken together, these data suggest that Probody technology functioned as expected, with limited peripheral activation of the checkpoint inhibitor.

Anti-PD-1/PD-L1 therapies are potentially limited by the development of irAEs. The incidence of all-grade irAEs varies among PD-1 and PD-L1 inhibitor therapies but have occurred in as many as 30% of patients in phase 3 trials.²² The incidence of severe irAEs requiring medical intervention or hold/discontinuation of immunotherapy is estimated to range from 0.5% to 13% of patients receiving monotherapy.²³ The most common irAEs among patients receiving anti-PD-1/PD-L1 agents include hypothyroidism (5.6%), pneumonitis (2.2%), colitis (0.7%), and hypophysitis (0.3%).⁷ Although rare, fatal irAEs can occur with PD-1 (0.36%) and PD-L1 (0.38%) inhibitors,⁸ with pneumonitis and cardiac irAEs being the most common causes of death.

In the present study—the first of pacmilimab—relatively common irAEs, such as pneumonitis and colitis, were seen only once (pneumonitis) or not at all (colitis) in the 151 patients treated with single-agent pacmilimab, suggesting a low incidence of these important AEs. However, it must be noted that this is an early-phase

study and is therefore limited by the number of patients exposed to pacmilimab, a heterogeneous patient population, and patients who discontinued treatment due to early disease progression.

Data from the 114 patients treated in this study with pacmilimab at 10mg/kg suggest preliminary antitumor activity, with an ORR of 12% and a disease control rate of 42%. The prespecified efficacy criteria to justify further exploration of single-agent pacmilimab were met for TNBC, aSCC, cSCC, and hTMB. At the time of trial initiation, no PD(L)-1 inhibitor was approved for these cancer types, although responses to checkpoint inhibitor therapy had been documented in these tumor types.^{24–27} Of note, patients were not selected for PD-L1 expression; among patients treated with 10mg/kg pacmilimab who had available PD-L1 expression data, 49 of 106 (46%) had no PD-L1 expression, and 35 of 106 (33%) had low expression. There was no clear relationship between response to treatment and high PD-L1 expression (figure 2A).

The clinical activity observed with pacmilimab 10 mg/kg compares favorably to historical data with other PD-L1 or PD-1 inhibitors in patient populations unselected for PD-L1 expression.²⁸ Although none of the TNBC patients in our study had high PD-L1 expression, the ORR was 7%,

which is similar to that observed with single-agent atezolizumab in patients with metastatic TNBC in the second-line setting and beyond (n=94; 6%).²⁹ The response rate with pacmilimab in patients with aSCC (13%) is similar to that observed with single-agent pembrolizumab in patients with recurrent, PD-L1-positive aSCC (n=24; 17%).²⁶ Although meaningful comparisons between studies are confounded by differences in design, patient characteristics, and the non-randomized nature of the comparison, the results observed with pacmilimab suggest potentially meaningful clinical activity.

Collectively, these data suggest that pacmilimab has a favorable tolerability profile with limited off-tumor toxicity. The potential for improved safety and tolerability of Probody therapeutics compared with conventional checkpoint inhibitors may yield optimal dose intensity with fewer dose interruptions or treatment discontinuations and may also allow improved tolerability of checkpoint inhibitor combinations with other checkpoint inhibitors, tyrosine kinase inhibitors, or cytotoxic chemotherapy. These preliminary findings with pacmilimab in patients with pretreated advanced solid tumors are encouraging and support further clinical evaluation. The tolerability and clinical activity of pacmilimab in combination with ipilimumab within the current study is reported separately³⁰.

Author affiliations

¹Department of Investigational Cancer Therapeutics, The University of Texas MD Anderson Cancer Center, Houston, Texas, USA

²Department of Medical Oncology, The Christie Hospital NHS Foundation Trust and University of Manchester, Manchester, UK

³Department of Medical Oncology, Universitair Medisch Centrum Groningen, Groningen, The Netherlands

⁴Department of Medical Oncology, Erasmus MC Cancer Institute, Rotterdam, The Netherlands

⁵Department of Medicine, Section of Hematology and Oncology, University of Wisconsin, Carbone Cancer Center, Madison, Wisconsin, USA

⁶Department of Medical Oncology, Dana-Farber Cancer Institute, Boston, Massachusetts, USA

⁷Department of Medical Oncology, Yale University School of Medicine, Yale Cancer Center, New Haven, Connecticut, USA

⁸Department of Medical Oncology, Hospital Clinic Barcelona/IDIBAPS, Barcelona, Spain

⁹Department of Medical Oncology, START Madrid-CIOCC, Hospital Universitario HM Sanchinarro, Madrid, Spain

¹⁰Sarah Cannon Research Institute/Tennessee Oncology, Nashville, Tennessee, USA

¹¹Genitourinary Oncology Service, Memorial Sloan Kettering Cancer Center, New York, New York, USA

¹²Department of Medical Oncology, Beatson West of Scotland Cancer Centre, Glasgow, UK

¹³Department of Medical Oncology, Indiana University, Melvin and Bren Simon Cancer Center, Indianapolis, Indiana, USA

¹⁴Medical Oncology Department, Institut Català d'Oncologia – IDIBELL, L'Hospitalet-Barcelona, Barcelona, Spain

¹⁵CytomX Therapeutics Inc, South San Francisco, California, USA

¹⁶Drug Development Unit, Sarah Cannon Research Institute and University College London Cancer Institute, London, UK

¹⁷Department of Medical Oncology, Virginia Cancer Specialists, Fairfax, Virginia, USA

Twitter Aung Naing @AnaingMD, Elisabeth G.E. De Vries @VriesElisabeth and Valentina Boni @ValentinaBoni7

Acknowledgements Medical writing and editorial assistance were provided by Esther Berkowitz, MBChB, MA, and Amy Zannikos, PharmD, both with Echelon Brand Communications, an OPEN Health company, Parsippany, NJ, and by Tracy

McNally, PhD, and Holly Strausbaugh, PhD, of Twist Medical, LLC. This assistance was funded by CytomX Therapeutics, Inc. The authors thank the patients and investigators who participated in the study. PROBODY is a US registered trademark of CytomX Therapeutics, Inc.

Contributors AN, FT, EGEDV, FALME, NU, PAO, PL, JG-C, VB, JB, KAA, MR, GD, MG-M, H-TA and AS collected data. All authors interpreted the data, critically reviewed the manuscript, and provided approval to submit the manuscript for publication.

Funding This study was sponsored by CytomX Therapeutics, Inc., South San Francisco, CA.

Competing interests AN: Research funding from Amplimmune, Arcus Biosciences, ARMO BioSciences, Attercor, BMS, Calithera Biosciences, CytomX Therapeutics, Eli Lilly, EMD, HealiosOnc, ImmuneOncia, Incyte, Karyopharm Therapeutics, Kymab, MedImmune, Merck, NCI, NeoImmuneTech, Neon Therapeutics, Novartis, Nutrition, Pfizer, PsiOxus, Regeneron, Serono, Surface Oncology, and TopAlliance Biosciences. Advisory boards for CytomX Therapeutics, Genome & Company, Kymab, Novartis, OncoSec KEYNOTE-695, and STCube Pharmaceuticals. Travel expenses from ARMO BioSciences. AN's spouse has received research funding from Baxalta, Chao physician-scientist, Immune Deficiency Foundation, and Jeffery Modell Foundation; and has served on advisory boards for Behring, CSL, Horizon, Pharming, and Takeda. FT: Research funding and conference registration from Novartis. Consultancy/advisory role for Achilles Therapeutics, Bayer, BMS, Enara Bio, GSK, T-Knife, and Zelluna. EGEDV: Institutional financial support for clinical trials or contracted research from Amgen, AstraZeneca, Bayer, Chugai Pharma, G1 Therapeutics, Genentech, Nordic Nanovector, Radius Health, Regeneron, Roche, Servier, and Synthon. Institutional financial support for advisory boards from Daiichi Sankyo, Merck, NSABP, Pfizer, and Sanofi; all outside the submitted work. FALME: Consultancy/advisory role for Servier, Novartis, Eisai, and Ipsen. NU: Consultant for AstraZeneca, Eli Lilly, Ipsen, QED, and Taiho. Research support from EMD, Ipsen, Serono, and Taiho. Holds stock in Exact Sciences and Natera. PAO: Research funding from and advisory role for Amgen, Armo BioSciences, Array, AstraZeneca/MedImmune, Bristol-Meyers Squibb, Celldex, CytomX, Merck, Neon Therapeutics, Novartis, Pfizer, and Roche/Genentech. PL: Consultant/advisory board for AbbVie, ABL Bio, Agenus, Agios, Astellas, AstraZeneca, Black Diamond, Cybrexa, CytomX, EMD Serono, GenMab, Genentech, Glaxo-Smith Kline, ImmunoMet, IQVIA, Kineta Inc., Kyowa Kirin Pharmaceutical Development, MacroGenics, Molecular Templates, Pfizer, QED Therapeutics, Salaris, Shattuck, Silverback, SK Life Science, SOTIO, STCube Pharmaceuticals, Takeda, TRIGR, and Zentalis Pharmaceuticals. Data safety monitoring committee for Five Prime, Halozyme, and Tyme. Participant in imCORE Alliance (Roche/Genentech). JG-C: Speaker's bureau for Bayer; fees to support registration and attending scientific meetings from BMS and Novartis. VB: Consulting/advisory role for CytomX Therapeutics, Guidepoint, Ideaya Biosciences, Loxo Therapeutics, Oncoart, and Puma Biotechnology. Institutional financial support for clinical trials from AbbVie, ACEO, Adaptimmune, Amcure, AMGEN, Astellas, AstraZeneca, BMS, Boehringer Ingelheim, Boston Therapeutics, CytomX Therapeutics, Daiichi, DebioPharm, Dynavax, GSK, Genentech/Roche, H3, Incyte, Inovio, Janssen, Kura, Lilly, Loxo, MacroGenics, Menarini, Merck, Mersana, Merus, Millenium, MSD, Nanobiotix, Nektar, Novartis, ORCA, Pfizer, PharmaMar, Principia, PsiOxus, PUMA, Regeneron, Rigotec, Sanofi, Seattle Genetics, Spectrum, Synthon, Taiho, Tesaro, Transgene, Takeda, and Zenith. JB: Institutional financial support for clinical trials or contracted research from AbbVie, Acerta Pharma, ADC, Agios, Amgen, Apexigen, Arch Oncology, Arcus Bio, ARMO, Array, Arrys, AstraZeneca, AtlasMedx, Bayer, Beigene, Bellicum, BI, Bicycle Therapeutics, Blueprint, BMS, Boston Biomedical, CALGB, Calithera, Celgene, Celldex, Cyteir Therapeutics, CytomX, Daiichi Sankyo, Effector, Eisai, EMD Serono, Evelo, Five Prime, FORMA, Forty Seven, Foundation Bio, Genentech/Roche, Gilead, Gossamer Bio, GSK, Harpoon, Hutchinson MediPharma, IGM Biosciences, Imclone, Incyte, Innate, Innate Pharma, Ipsen, Jacobio, Koltan, LEAP, Lilly, Mabspace, MacroGenics, Marshall Edwards, MedImmune, Merck, Merrimack, Mersana, Merus, Millennium, Morphotex, Nektar, NeoImmune Tech, NGM Biopharma, Novartis, Novocare, NuMab, Oncogenex, OncoMed, Oncologie, Onyx, Pfizer, Pieris, Prelude Oncology, PureTech Health, Regeneron, Relay Therapeutics, REPARE Therapeutics, Revolution Medicines, Rgenix, Sanofi, Scholar Rock, Seattle Genetics, Shattuck Labs, Sierra, Stemcentrx, SynDevRex, Synthorx, Taiho, Takeda, Tarveda, TempestTx, TG Therapeutics, Tracoon, Treadwell Therapeutics, Tyrogenex, Unum Therapeutics, Vyriad, and Zymeworks. Institutional financial support for advisory boards/consulting from Array, Agios, Amgen, Apexigen, Arch Oncology, ARMO, AstraZeneca, Bayer, Beigene, BI, Bicycle Therapeutics, BMS, Celgene, Continuum Clinical, Cyteir, Daiichi Sankyo, Evelo, Five Prime, FORMA, Fusion Therapeutics, Genentech/Roche, Gilead, GSK, Incyte, Ipsen, Janssen, LEAP, Lilly, MacroGenics, MedImmune, Merck, Merrimack, Moderna Therapeutics, Molecular Partners, Novartis, Oncogenex, OncoMed, Pfizer, Phoenix Bio, Piper Biotech, Prelude Therapeutics, Relay Therapeutics, Samsung Bioepis,

Sanofi, Seattle Genetics, Taiho, Tanabe Research Laboratories, TD2 (Translational Drug Development), TG Therapeutics, Tizona, Tolero, and Torque. Food, beverages and/or travel expenses from ARMO, BI, BMS, Celgene, FORMA, Genentech/Roche, Gilead, Ipsen, Lilly, MedImmune, Merck, Novartis, Oncogenex, OncoMed, and Taiho. KAA: Advisory board for CytomX (unpaid). Institutional financial support for clinical trials or contracted research from Amgen, AstraZeneca, CytomX, GSK, Merck, Pfizer, and Tizona. MR: Honoraria from Bayer. GD: Research funding from AstraZeneca, Bristol Myers Squibb, and Merck. Honoraria from AstraZeneca. Advisory board for Curio Science. MG-M: Speaker's bureau for AstraZeneca, Pharmamar, and Roche. Financial support for registration and attendance at scientific meetings from MDS, Pharmamar, and Roche. MS is a former employee and ALH is a current employee of CytomX Therapeutics, Inc. Both are stockowners in CytomX Therapeutics Inc. H-TA: Advisor for Bayer, Beigene, Bicycle, Engitix, Guardant, iOnctura, Roche, and Servier. Employed by HCA Healthcare UK and Sarah Cannon Research Institute. AS: Consultant for Amgen, AstraZeneca, BMS, Merck, Mirati, and Novartis. Institutional financial support for clinical trials or contracted research from CytomX.

Patient consent for publication Not required.

Ethics approval This study was conducted in accordance with the Institutional Review Board or independent ethics committee-approved protocol at each study site and with the International Conference on Harmonisation Good Clinical Practice Guidelines. All patients provided written informed consent.

Provenance and peer review Not commissioned; externally peer reviewed.

Data availability statement All data relevant to the study are included in the article or uploaded as online supplemental information. The datasets used and/or analyzed during the current study are available from the corresponding author on reasonable request.

Supplemental material This content has been supplied by the author(s). It has not been vetted by BMJ Publishing Group Limited (BMJ) and may not have been peer-reviewed. Any opinions or recommendations discussed are solely those of the author(s) and are not endorsed by BMJ. BMJ disclaims all liability and responsibility arising from any reliance placed on the content. Where the content includes any translated material, BMJ does not warrant the accuracy and reliability of the translations (including but not limited to local regulations, clinical guidelines, terminology, drug names and drug dosages), and is not responsible for any error and/or omissions arising from translation and adaptation or otherwise.

Open access This is an open access article distributed in accordance with the Creative Commons Attribution Non Commercial (CC BY-NC 4.0) license, which permits others to distribute, remix, adapt, build upon this work non-commercially, and license their derivative works on different terms, provided the original work is properly cited, appropriate credit is given, any changes made indicated, and the use is non-commercial. See <http://creativecommons.org/licenses/by-nc/4.0/>.

ORCID iDs

Aung Naing <http://orcid.org/0000-0002-4803-8513>

Alexander Spira <http://orcid.org/0000-0003-1303-0447>

REFERENCES

- Herbst RS, Baas P, Kim D-W, *et al.* Pembrolizumab versus docetaxel for previously treated, PD-L1-positive, advanced non-small-cell lung cancer (KEYNOTE-010): a randomised controlled trial. *Lancet* 2016;387:1540–50.
- Robert C, Long GV, Brady B, *et al.* Nivolumab in previously untreated melanoma without BRAF mutation. *N Engl J Med* 2015;372:320–30.
- Rittmeyer A, Barlesi F, Waterkamp D, *et al.* Atezolizumab versus docetaxel in patients with previously treated non-small-cell lung cancer (OAK): a phase 3, open-label, multicentre randomised controlled trial. *Lancet* 2017;389:255–65.
- Bellmunt J, de Wit R, Vaughn DJ, *et al.* Pembrolizumab as second-line therapy for advanced urothelial carcinoma. *N Engl J Med* 2017;376:1015–26.
- Finn RS, Qin S, Ikeda M, *et al.* Atezolizumab plus bevacizumab in unresectable hepatocellular carcinoma. *N Engl J Med* 2020;382:1894–905.
- Motzer RJ, Escudier B, George S, *et al.* Nivolumab versus everolimus in patients with advanced renal cell carcinoma: updated results with long-term follow-up of the randomized, open-label, phase 3 CheckMate 025 trial. *Cancer* 2020;126:4156–67.
- Baxi S, Yang A, Gennarelli RL, *et al.* Immune-related adverse events for anti-PD-1 and anti-PD-L1 drugs: systematic review and meta-analysis. *BMJ* 2018;360:k793.
- Wang DY, Salem J-E, Cohen JV, *et al.* Fatal toxic effects associated with immune checkpoint inhibitors: a systematic review and meta-analysis. *JAMA Oncol* 2018;4:1721–8.
- Puzanov I, Diab A, Abdallah K, *et al.* Managing toxicities associated with immune checkpoint inhibitors: consensus recommendations from the Society for Immunotherapy of Cancer (SITC) Toxicity Management Working Group. *J Immunother Cancer* 2017;5:95.
- Desnoyers LR, Vasiljeva O, Richardson JH, *et al.* Tumor-Specific activation of an EGFR-targeting probody enhances therapeutic index. *Sci Transl Med* 2013;5:207ra144.
- Polu KR, Lowman HB. Probody therapeutics for targeting antibodies to diseased tissue. *Expert Opin Biol Ther* 2014;14:1049–53.
- Autio KA, Boni V, Humphrey RW, *et al.* Probody therapeutics: an emerging class of therapies designed to enhance on-target effects with reduced off-tumor toxicity for use in immuno-oncology. *Clin Cancer Res* 2020;26:984–9.
- Tipton KA, Chan C, Wong KR. PD-1 Probody™ therapeutic anti-tumor efficacy and protection against autoimmunity in preclinical models [poster]. *Annual Meeting of the American Association for Cancer Research; Poster 3211*; April 16–20, 2016, New Orleans, LA, 2016.
- Giesen D, Broer LN, Lub-de Hooge MN, *et al.* Probody therapeutic design of ⁸⁹Zr-CX-072 promotes accumulation in PD-L1-expressing tumors compared to normal murine lymphoid tissue. *Clin Cancer Res* 2020;26:3999–4009.
- Lyman SK, Naing A, Zein IA. Evidence of intratumoral localization, activation, and immunomodulatory effect of CX-072, a PROBODY therapeutic targeting PD-L1, in a phase I/II trial [poster]. *American Society of Clinical Oncology Virtual Meeting*; May 29–31, 2020, 2020.
- Bohnsack O, Hoos A, Ludajic K. Adaptation of the immune related response criteria: irRECIST. *Annals of Oncology* 2014;25:iv369–72.
- Giaccone G, Kim C, Thompson J, *et al.* Pembrolizumab in patients with thymic carcinoma: a single-arm, single-centre, phase 2 study. *Lancet Oncol* 2018;19:347–55.
- Cho J, Kim HS, Ku BM, *et al.* Pembrolizumab for patients with refractory or relapsed thymic epithelial tumor: an open-label phase II trial. *J Clin Oncol* 2019;37:2162–70.
- Rajan A, Heery CR, Thomas A, *et al.* Efficacy and tolerability of anti-programmed death-ligand 1 (PD-L1) antibody (Avelumab) treatment in advanced thymoma. *J Immunother Cancer* 2019;7:269.
- Brookmeyer R, Crowley J. A confidence interval for the median survival time. *Biometrics* 1982;38:29–41.
- Stroh M, Green M, Millard BL, *et al.* Model-informed drug development of the masked anti-PD-L1 antibody CX-072. *Clin Pharmacol Ther* 2021;109:383–93.
- NCCN Clinical Practice Guidelines in Oncology (NCCN Guidelines). Management of Immunotherapy-Related toxicities, v1, 2020. Available: https://www.nccn.org/professionals/physician_gls/default.aspx
- Kumar V, Chaudhary N, Garg M, *et al.* Current diagnosis and management of immune related adverse events (irAEs) induced by immune checkpoint inhibitor therapy. *Front Pharmacol* 2017;8:49.
- Rosenberg JE, Hoffman-Censits J, Powles T, *et al.* Atezolizumab in patients with locally advanced and metastatic urothelial carcinoma who have progressed following treatment with platinum-based chemotherapy: a single-arm, multicentre, phase 2 trial. *Lancet* 2016;387:1909–20.
- Nanda R, Chow LQM, Dees EC, *et al.* Pembrolizumab in patients with advanced triple-negative breast cancer: phase Ib KEYNOTE-012 study. *J Clin Oncol* 2016;34:2460–7.
- Ott PA, Piha-Paul SA, Munster P, *et al.* Safety and antitumor activity of the anti-PD-1 antibody pembrolizumab in patients with recurrent carcinoma of the anal canal. *Ann Oncol* 2017;28:1036–41.
- Papadopoulos KP, Owonikoko TK, Johnson M, *et al.* Cemiplimab (REGN2810): A fully human anti-PD-1 monoclonal antibody for patients with unresectable locally advanced or metastatic cutaneous squamous cell carcinoma (CSCC)—Initial safety and efficacy from expansion cohorts (ECs) of phase I study. *J Clin Oncol* 2018;36:195.
- Zhao B, Zhao H, Zhao J. Efficacy of PD-1/PD-L1 blockade monotherapy in clinical trials. *Ther Adv Med Oncol* 2020;12:1–22.
- Emens LA, Cruz C, Eder JP, *et al.* Long-term clinical outcomes and biomarker analyses of atezolizumab therapy for patients with metastatic triple-negative breast cancer: a phase 1 study. *JAMA Oncol* 2019;5:74–82.
- Sanborn RE, Hamid O, De Vries E. CX-072 (pacmilimab), a Probody PD-L1 inhibitor, in combination with ipilimumab in patients with advanced solid tumors (PROCLAIM-CX-072): a first-in-human, dose-finding study. *J Immunother Cancer* 2021.

Supplemental Tables

Supplemental Table 1 Definition of immune-related adverse events

Immune-related adverse events were defined as adverse events with no clear alternate etiology and requiring systemic corticosteroid or immunosuppressant treatment within 30 days of onset or that required the use of systemic hormonal supplementation. Specific events included:
<ul style="list-style-type: none">• Pneumonitis
<ul style="list-style-type: none">• Colitis
<ul style="list-style-type: none">• Hepatitis (including aspartate aminotransferase or alanine aminotransferase elevations >3×ULN or bilirubin >1.5×ULN)
<ul style="list-style-type: none">• Nephritis (including serum creatinine >1.5×ULN)
<ul style="list-style-type: none">• Pancreatitis
<ul style="list-style-type: none">• Motor and sensory neuropathy
<ul style="list-style-type: none">• Myocarditis
<ul style="list-style-type: none">• Encephalitis
<ul style="list-style-type: none">• Endocrinopathies (including but not limited to hypothyroidism, hyperthyroidism, hypophysitis, diabetes mellitus, and adrenal insufficiency)
<ul style="list-style-type: none">• Ocular toxicities (uveitis)
<ul style="list-style-type: none">• Skin reactions, including Stevens-Johnson syndrome or toxic epidermal necrolysis
<ul style="list-style-type: none">• Diarrhea

ULN, upper limit of normal.

Supplemental Table 2 Treatment-emergent adverse events in dose escalation phase
by severity grade (n=53)

n (%)	Grade 1-2	Grade 3	Grade 4
Patients with at least 1	17 (32)	33 (62)	3 (6)
Fatigue	15 (28)	1 (2)	0
Decreased appetite	13 (25)	2 (4)	0
Nausea	14 (26)	0	0
Cough	13 (25)	0	0
Anemia	6 (11)	6 (11)	0
Constipation	12 (23)	0	0
Infusion related reaction	10 (19)	0	1 (2)
Back pain	9 (17)	1 (2)	0
Dyspnea	7 (13)	2 (4)	0
Arthralgia	7 (13)	1 (2)	0
Pyrexia	7 (13)	1 (2)	0
Diarrhea	6 (11)	1 (2)	0
Headache	7 (13)	0	0
Blood alkaline phosphatase increased	4 (8)	2 (4)	0
Dizziness	6 (11)	0	0
Hyponatremia	4 (8)	2 (4)	0
Pain in extremity	5 (9)	1 (2)	0
Pruritus	6 (11)	0	0
Dehydration	3 (6)	2 (4)	0
Hypoalbuminemia	4 (8)	1 (2)	0

n (%)	Grade 1-2	Grade 3	Grade 4
Hypokalemia	4 (8)	1 (2)	0
Myalgia	5 (9)	0	0
Edema peripheral	4 (8)	1 (2)	0
Vomiting	4 (8)	1 (2)	0
Abdominal pain	3 (6)	1 (2)	0
Asthenia	4 (8)	0	0
Dyspepsia	4 (8)	0	0
Urinary tract infection	3 (6)	1 (2)	0
Abdominal distension	3 (6)	0	0
Acute kidney injury	1 (2)	2 (4)	0
Alanine aminotransferase increased	2 (4)	0	1 (2)
Dysphagia	3 (6)	0	0
Epistaxis	3 (6)	0	0
Hematuria	2 (4)	1 (2)	0
Hypercalcemia	2 (4)	1 (2)	0
Hypotension	3 (6)	0	0
Hypothyroidism	3 (6)	0	0
Insomnia	3 (6)	0	0
Muscular weakness	2 (4)	1 (2)	0
Musculoskeletal pain	3 (6)	0	0
Neck pain	3 (6)	0	0
Neuropathy peripheral	3 (6)	0	0
Night sweats	3 (6)	0	0
Non-cardiac chest pain	3 (6)	0	0

n (%)	Grade 1-2	Grade 3	Grade 4
Upper respiratory tract infection	3 (6)	0	0
Weight decreased	2 (4)	1 (2)	0
Aspartate aminotransferase increased	1 (2)	1 (2)	0
Atrial fibrillation	2 (4)	0	0
Bone pain	0	2 (4)	0
Chest discomfort	2 (4)	0	0
Confusional state	2 (4)	0	0
Deep vein thrombosis	1 (2)	1 (2)	0
Dry mouth	2 (4)	0	0
Dysphonia	2 (4)	0	0
Fall	1 (2)	1 (2)	0
Flank pain	2 (4)	0	0
Gamma-glutamyltransferase increased	0	2 (4)	0
Hiccups	2 (4)	0	0
Hot flush	2 (4)	0	0
Hydronephrosis	2 (4)	0	0
Hypertension	1 (2)	1 (2)	0
Hypoesthesia	2 (4)	0	0
Hypoglycemia	1 (2)	1 (2)	0
Hypomagnesaemia	2 (4)	0	0
Hypophosphatasemia	1 (2)	1 (2)	0
Lower respiratory tract infection	0	2 (4)	0
Musculoskeletal chest pain	2 (4)	0	0
Nasal congestion	2 (4)	0	0

n (%)	Grade 1-2	Grade 3	Grade 4
Oral candidiasis	2 (4)	0	0
Paraesthesia	2 (4)	0	0
Peripheral swelling	2 (4)	0	0
Pneumonia	1 (2)	1 (2)	0
Pulmonary embolism	0	2 (4)	0
Sinus tachycardia	2 (4)	0	0
Small intestinal obstruction	0	2 (4)	0
Supraventricular tachycardia	1 (2)	1 (2)	0
Thrombocytopenia	1 (2)	1 (2)	0
Urinary incontinence	2 (4)	0	0
Viral infection	2 (4)	0	0
Weight increased	2 (4)	0	0
Abdominal pain upper	1 (2)	0	0
Abdominal wall abscess	1 (2)	0	0
Abscess	0	1 (2)	0
Allergic transfusion reaction	1 (2)	0	0
Alopecia	0	1 (2)	0
Amaurosis fugax	1 (2)	0	0
Amylase increased	0	1 (2)	0
Anal hemorrhage	1 (2)	0	0
Anxiety	1 (2)	0	0
Ascites	1 (2)	0	0
Axillary pain	1 (2)	0	0
Blood bicarbonate increased	1 (2)	0	0

n (%)	Grade 1-2	Grade 3	Grade 4
Blood lactate dehydrogenase increased	0	1 (2)	0
Breast swelling	1 (2)	0	0
Breath odor	1 (2)	0	0
Bundle branch block right	1 (2)	0	0
Cardiac murmur	1 (2)	0	0
Catheter site pain	1 (2)	0	0
Cerebrovascular accident	1 (2)	0	0
Chills	1 (2)	0	0
Conjunctivitis	1 (2)	0	0
Depression	1 (2)	0	0
Diplopia	1 (2)	0	0
Diverticulitis	0	1 (2)	0
Dizziness exertional	1 (2)	0	0
Drug eruption	1 (2)	0	0
Dry eye	1 (2)	0	0
Dry skin	1 (2)	0	0
Dry throat	1 (2)	0	0
Dysgeusia	1 (2)	0	0
Dyspnea exertional	1 (2)	0	0
Early satiety	1 (2)	0	0
Electrocardiogram QT prolonged	1 (2)	0	0
Emotional distress	1 (2)	0	0
Enterocutaneous fistula	0	1 (2)	0
Epididymitis	1 (2)	0	0

n (%)	Grade 1-2	Grade 3	Grade 4
Erythema	1 (2)	0	0
Febrile neutropenia	0	1 (2)	0
Gastritis	1 (2)	0	0
Gastroenteritis	1 (2)	0	0
Groin pain	1 (2)	0	0
Hemorrhoids	1 (2)	0	0
Hepatic enzyme increased	1 (2)	0	0
Herpes simplex reactivation	1 (2)	0	0
Hyperbilirubinemia	0	1 (2)	0
Hyperkalemia	1 (2)	0	0
Hyperlipidemia	1 (2)	0	0
Hypersensitivity	1 (2)	0	0
Hyperuricemia	0	0	1 (2)
Hypocalcaemia	1 (2)	0	0
Influenza like illness	1 (2)	0	0
Intestinal obstruction	0	1 (2)	0
Lactic acidosis	1 (2)	0	0
Laryngitis	1 (2)	0	0
Lethargy	1 (2)	0	0
Leukocytosis	1 (2)	0	0
Malaise	1 (2)	0	0
Mental status changes	1 (2)	0	0
Metabolic encephalopathy	1 (2)	0	0
Migraine with aura	1 (2)	0	0

n (%)	Grade 1-2	Grade 3	Grade 4
Muscle spasms	1 (2)	0	0
Nephrolithiasis	0	1 (2)	0
Neutrophil count decreased	1 (2)	0	0
Edema	1 (2)	0	0
Oropharyngeal pain	1 (2)	0	0
Pain	0	1 (2)	0
Pain in jaw	1 (2)	0	0
Palpitations	1 (2)	0	0
Pelvic pain	1 (2)	0	0
Pericardial effusion	0	1 (2)	0
Peripheral sensory neuropathy	1 (2)	0	0
Peritonitis bacterial	1 (2)	0	0
Platelet count decreased	1 (2)	0	0
Pleural effusion	0	1 (2)	0
Pneumonitis	0	1 (2)	0
Poor quality sleep	1 (2)	0	0
Postrenal failure	1 (2)	0	0
Productive cough	1 (2)	0	0
Pulmonary edema	1 (2)	0	0
Rash	1 (2)	0	0
Rash maculo-papular	1 (2)	0	0
Rash pruritic	1 (2)	0	0
Respiratory tract infection	0	1 (2)	0
Rhinorrhea	1 (2)	0	0

n (%)	Grade 1-2	Grade 3	Grade 4
Sciatica	1 (2)	0	0
Sepsis	0	1 (2)	0
Skin infection	1 (2)	0	0
Skin ulcer	1 (2)	0	0
Sleep apnea syndrome	1 (2)	0	0
Stomatitis	1 (2)	0	0
Stress cardiomyopathy	0	1 (2)	0
Syncope	1 (2)	0	0
Tachycardia	1 (2)	0	0
Trigger finger	1 (2)	0	0
Tumor pruritus	1 (2)	0	0
Urinary retention	1 (2)	0	0
Urinary tract obstruction	0	1 (2)	0
Urinary tract pain	1 (2)	0	0
Vaginal discharge	1 (2)	0	0
Vision blurred	1 (2)	0	0
Vitreous floaters	1 (2)	0	0
Vulvovaginal pain	1 (2)	0	0
White blood cell count decreased	1 (2)	0	0

Supplemental Table 3 Treatment-related adverse events in dose escalation phase by severity grade (n=53)

n (%)	Grade 1-2	Grade 3	Grade 4
Patients with at least 1	24 (45)	6 (11)	2 (4)
Infusion related reaction	10 (19)	0	1 (2)
Fatigue	8 (15)	0	0
Arthralgia	5 (9)	0	0
Myalgia	4 (8)	0	0
Pruritus	3 (6)	0	0
Pyrexia	3 (6)	0	0
Alanine aminotransferase increased	1 (2)	0	1 (2)
Anemia	1 (2)	1 (2)	0
Aspartate aminotransferase increased	1 (2)	1 (2)	0
Asthenia	2 (4)	0	0
Blood alkaline phosphatase increased	2 (4)	0	0
Decreased appetite	2 (4)	0	0
Headache	2 (4)	0	0
Nausea	2 (4)	0	0
Thrombocytopenia	1 (2)	1 (2)	0
Amylase increased	0	1 (2)	0
Back pain	1 (2)	0	0
Chest discomfort	1 (2)	0	0
Chills	1 (2)	0	0
Cough	1 (2)	0	0

n (%)	Grade 1-2	Grade 3	Grade 4
Diarrhea	1 (2)	0	0
Dizziness	1 (2)	0	0
Dry mouth	1 (2)	0	0
Dry skin	1 (2)	0	0
Dyspepsia	1 (2)	0	0
Dysphagia	1 (2)	0	0
Dyspnea	1 (2)	0	0
Enterocutaneous fistula	0	1 (2)	0
Epistaxis	1 (2)	0	0
Febrile neutropenia	0	1 (2)	0
Gamma-glutamyltransferase increased	0	1 (2)	0
Hepatic enzyme increased	1 (2)	0	0
Hypersensitivity	1 (2)	0	0
Hypoglycemia	1 (2)	0	0
Hypothyroidism	1 (2)	0	0
Influenza like illness	1 (2)	0	0
Migraine with aura	1 (2)	0	0
Neuropathy peripheral	1 (2)	0	0
Neutrophil count decreased	1 (2)	0	0
Pain in extremity	1 (2)	0	0
Paresthesia	1 (2)	0	0
Platelet count decreased	1 (2)	0	0
Pneumonitis	0	1 (2)	0
Productive cough	1 (2)	0	0

n (%)	Grade 1-2	Grade 3	Grade 4
Rash	1 (2)	0	0
Stomatitis	1 (2)	0	0
Stress cardiomyopathy	0	1 (2)	0
Syncope	1 (2)	0	0
Tumour pruritus	1 (2)	0	0
White blood cell count decreased	1 (2)	0	0

Supplemental Table 4 Treatment-emergent adverse events in patients receiving pacmilimab 10 mg/kg in dose-escalation and expansion phases (n=114) by severity grade

n (%)	Grade 1-2	Grade 3	Grade 4
Patients with at least 1	49 (43)	56 (49)	6 (5)
Fatigue	36 (32)	2 (2)	0
Diarrhea	27 (24)	3 (3)	0
Anemia	14 (12)	14 (12)	0
Decreased appetite	26 (23)	2 (2)	0
Nausea	26 (23)	1 (1)	0
Aspartate aminotransferase increased	18 (16)	5 (4)	0
Vomiting	19 (17)	3 (3)	0
Cough	19 (17)	1 (1)	0
Dyspnea	15 (13)	4 (4)	0
Arthralgia	14 (12)	2 (2)	0
Constipation	16 (14)	0	0
Alanine aminotransferase increased	15 (13)	0	0
Pyrexia	14 (12)	1 (1)	0
Back pain	12 (11)	2 (2)	0
Headache	14 (12)	0	0
Rash	14 (12)	0	0
Blood alkaline phosphatase increased	11 (10)	2 (2)	0
Weight decreased	12 (11)	1 (1)	0
Upper respiratory tract infection	12 (11)	0	0

n (%)	Grade 1-2	Grade 3	Grade 4
Urinary tract infection	10 (9)	1 (1)	0
Blood creatinine increased	10 (9)	0	0
Myalgia	10 (9)	0	0
Edema peripheral	9 (8)	1 (1)	0
Abdominal pain	6 (5)	3 (3)	0
Hypertension	7 (6)	2 (2)	0
Hyponatremia	6 (5)	3 (3)	0
Infusion related reaction	9 (8)	0	0
Musculoskeletal pain	9 (8)	0	0
Pruritus	9 (8)	0	0
Abdominal pain upper	8 (7)	0	0
Dizziness	8 (7)	0	0
Hypoalbuminemia	7 (6)	1 (1)	0
Lipase increased	4 (4)	4 (4)	0
Pneumonia	1 (1)	7 (6)	0
Dehydration	6 (5)	1 (1)	0
Abdominal distension	6 (5)	0	0
Amylase increased	6 (5)	0	0
Hypercalcemia	5 (4)	1 (1)	0
Hyperglycemia	6 (5)	0	0
Hypomagnesaemia	5 (4)	1 (1)	0
Insomnia	6 (5)	0	0
Muscular weakness	5 (4)	1 (1)	0
Pain in extremity	5 (4)	1 (1)	0

n (%)	Grade 1-2	Grade 3	Grade 4
Stomatitis	5 (4)	1 (1)	0
Cellulitis	3 (3)	2 (2)	0
Dry mouth	5 (4)	0	0
Hot flush	5 (4)	0	0
Hypokalemia	5 (4)	0	0
Hypothyroidism	5 (4)	0	0
Muscle spasms	5 (4)	0	0
Musculoskeletal chest pain	4 (4)	1 (1)	0
Edema	5 (4)	0	0
Chills	4 (4)	0	0
Depression	4 (4)	0	0
Fall	3 (3)	1 (1)	0
Flank pain	4 (4)	0	0
Gamma-glutamyltransferase increased	0	3 (3)	1 (1)
Hypocalcaemia	4 (4)	0	0
Influenza like illness	4 (4)	0	0
Lower respiratory tract infection	2 (2)	2 (2)	0
Neuropathy peripheral	4 (4)	0	0
Night sweats	4 (4)	0	0
Non-cardiac chest pain	4 (4)	0	0
Pain	4 (4)	0	0
Pericardial effusion	1 (1)	3 (3)	0
Renal failure	2 (2)	2 (2)	0
Sepsis	1 (1)	1 (1)	2 (2)

n (%)	Grade 1-2	Grade 3	Grade 4
Tumor pain	3 (3)	1 (1)	0
Vision blurred	4(3.5)	0	0
Alopecia	2 (2)	1 (1)	0
Asthenia	2 (2)	1 (1)	0
Cancer pain	2 (2)	1 (1)	0
Dyspepsia	3 (3)	0	0
Dysphagia	3 (3)	0	0
Dysphonia	3 (3)	0	0
Epistaxis	3 (3)	0	0
Erythema	3 (3)	0	0
Hiccups	3 (3)	0	0
Hyperkalemia	3 (3)	0	0
Hyperphosphatemia	3 (3)	0	0
Leukocytosis	1 (1)	2 (2)	0
Nasal congestion	3 (3)	0	0
Paresthesia	3 (3)	0	0
Platelet count decreased	3 (3)	0	0
Productive cough	3 (3)	0	0
Rash maculo-papular	2 (2)	1 (1)	0
Rectal hemorrhage	3 (3)	0	0
Abdominal discomfort	2 (2)	0	0
Acute kidney injury	0	2 (2)	0
Atrial fibrillation	2 (2)	0	0
Axillary pain	2 (2)	0	0

n (%)	Grade 1-2	Grade 3	Grade 4
Blood lactate dehydrogenase increased	1 (1)	1 (1)	0
Blood magnesium decreased	2 (2)	0	0
Bone pain	1 (1)	1 (1)	0
COVID-19	1 (1)	1 (1)	0
Catheter site pain	2 (2)	0	0
Conjunctival hemorrhage	2 (2)	0	0
Decubitus ulcer	2 (2)	0	0
Dysgeusia	2 (2)	0	0
Electrocardiogram QT prolonged	2 (2)	0	0
Epigastric discomfort	2 (2)	0	0
Eye pruritus	2 (2)	0	0
Facial pain	2 (2)	0	0
Gastritis	2 (2)	0	0
Hemoptysis	2 (2)	0	0
Hemorrhoids	2 (2)	0	0
Hydronephrosis	2 (2)	0	0
Hyperthyroidism	2 (2)	0	0
Hypoglycemia	2 (2)	0	0
Intestinal obstruction	0	2 (2)	0
Iron deficiency	2 (2)	0	0
Lethargy	2 (2)	0	0
Leukopenia	2 (2)	0	0
Migraine with aura	2 (2)	0	0
Musculoskeletal stiffness	2 (2)	0	0

n (%)	Grade 1-2	Grade 3	Grade 4
Nasopharyngitis	2 (2)	0	0
Neutropenia	2 (2)	0	0
Neutrophil count decreased	2 (2)	0	0
Ocular hyperemia	2 (2)	0	0
Oral candidiasis	2 (2)	0	0
Peripheral sensory neuropathy	2 (2)	0	0
Peripheral swelling	2 (2)	0	0
Pleural effusion	2 (2)	0	0
Pollakiuria	2 (2)	0	0
Procedural pain	2 (2)	0	0
Rhinitis allergic	2 (2)	0	0
Rhinorrhea	2 (2)	0	0
Skin infection	2 (2)	0	0
Small intestinal obstruction	0	2 (2)	0
Somnolence	2 (2)	0	0
Thrombocytopenia	2 (2)	0	0
Tumor hemorrhage	1 (1)	1 (1)	0
Viral infection	2 (2)	0	0
Vitamin D decreased	2 (2)	0	0
Weight increased	2 (2)	0	0
Wheezing	2 (2)	0	0
Abdominal mass	1 (1)	0	0
Abdominal wall abscess	1 (1)	0	0
Abscess	0	1 (1)	0

n (%)	Grade 1-2	Grade 3	Grade 4
Acral lentiginous melanoma	1 (1)	0	0
Acute respiratory failure	0	0	1 (1)
Allergic transfusion reaction	1 (1)	0	0
Antipsychotic drug level increased	1 (1)	0	0
Arthritis	1 (1)	0	0
Ascites	1 (1)	0	0
Bacteremia	1 (1)	0	0
Balance disorder	1 (1)	0	0
Basal cell carcinoma	1 (1)	0	0
Blood bicarbonate increased	1 (1)	0	0
Blood bilirubin increased	1 (1)	0	0
Blood cholesterol increased	1 (1)	0	0
Blood loss anemia	0	1 (1)	0
Blood pressure increased	1 (1)	0	0
Bradyphrenia	1 (1)	0	0
Breast discharge	1 (1)	0	0
Breast mass	1 (1)	0	0
Breast pain	1 (1)	0	0
Breast swelling	1 (1)	0	0
Breath odor	1 (1)	0	0
Buttock injury	0	1 (1)	0
Candida infection	1 (1)	0	0
Catheter site rash	1 (1)	0	0
Cerebral ischemia	1 (1)	0	0

n (%)	Grade 1-2	Grade 3	Grade 4
Cerumen impaction	1 (1)	0	0
Chest discomfort	0	1 (1)	0
Chronic obstructive pulmonary disease	0	1 (1)	0
Circulatory collapse	1 (1)	0	0
Clavicle fracture	1 (1)	0	0
Coagulation test abnormal	1 (1)	0	0
Cognitive disorder	0	1 (1)	0
Confusional state	0	1 (1)	0
Conjunctivitis	1 (1)	0	0
Corneal leukoma	1 (1)	0	0
Deep vein thrombosis	1 (1)	0	0
Delirium	0	1 (1)	0
Depressed level of consciousness	1 (1)	0	0
Device occlusion	1 (1)	0	0
Disturbance in attention	1 (1)	0	0
Diverticulitis	1 (1)	0	0
Drug eruption	1 (1)	0	0
Dry throat	1 (1)	0	0
Dysesthesia	1 (1)	0	0
Dysuria	1 (1)	0	0
Ear discomfort	1 (1)	0	0
Ear injury	1 (1)	0	0
Ear pain	1 (1)	0	0
Eczema	1 (1)	0	0

n (%)	Grade 1-2	Grade 3	Grade 4
Enterocutaneous fistula	0	1 (1)	0
Erectile dysfunction	1 (1)	0	0
Eye hemorrhage	1 (1)	0	0
Eye edema	1 (1)	0	0
Eye pain	1 (1)	0	0
Face edema	1 (1)	0	0
Feeling abnormal	1 (1)	0	0
Flatulence	1 (1)	0	0
Fungal infection	1 (1)	0	0
Gait disturbance	0	1 (1)	0
Gastric stenosis	1 (1)	0	0
Gastric ulcer	0	1 (1)	0
Gastroenteritis	1 (1)	0	0
Gastrointestinal stoma complication	1 (1)	0	0
Gastrointestinal stoma output decreased	1 (1)	0	0
Hematuria	1 (1)	0	0
Hemobilia	0	1 (1)	0
Head discomfort	1 (1)	0	0
Hepatic enzyme increased	1 (1)	0	0
Hepatomegaly	1 (1)	0	0
Hernia	1 (1)	0	0
Herpes simplex reactivation	1 (1)	0	0
Hiatus hernia	1 (1)	0	0
Humerus fracture	0	1 (1)	0

n (%)	Grade 1-2	Grade 3	Grade 4
Hydrocephalus	1 (1)	0	0
Hyperesthesia teeth	1 (1)	0	0
Hyperbilirubinemia	1 (1)	0	0
Hyperhidrosis	1 (1)	0	0
Hyperlipasemia	1 (1)	0	0
Hypernatremia	1 (1)	0	0
Hypersensitivity	1 (1)	0	0
Hypertonic bladder	1 (1)	0	0
Hyperuricemia	1 (1)	0	0
Hypophosphatemia	1 (1)	0	0
Hypoxia	0	1 (1)	0
Initial insomnia	1 (1)	0	0
Injection site bruising	1 (1)	0	0
Intertrigo	1 (1)	0	0
Intervertebral disc protrusion	1 (1)	0	0
Iron deficiency anemia	1 (1)	0	0
Joint swelling	1 (1)	0	0
Keratitis	1 (1)	0	0
Large intestinal obstruction	0	1 (1)	0
Laryngitis	1 (1)	0	0
Lichenoid keratosis	1 (1)	0	0
Liver function test increased	0	1 (1)	0
Localized edema	1 (1)	0	0
Lymphocyte count decreased	0	1 (1)	0

n (%)	Grade 1-2	Grade 3	Grade 4
Lymphoedema	1 (1)	0	0
Lymphopenia	1 (1)	0	0
Macular edema	1 (1)	0	0
Malaise	1 (1)	0	0
Malignant neoplasm progression	0	1 (1)	0
Microcytic anemia	1 (1)	0	0
Mucosal inflammation	1 (1)	0	0
Muscle strain	1 (1)	0	0
Muscle twitching	1 (1)	0	0
Myocarditis	0	1 (1)	0
Myokymia	1 (1)	0	0
Neck pain	1 (1)	0	0
Neoplasm skin	1 (1)	0	0
Nephrolithiasis	0	1 (1)	0
Oral herpes	1 (1)	0	0
Orbital infection	1 (1)	0	0
Oropharyngeal pain	1 (1)	0	0
Otitis externa	1 (1)	0	0
Otorrhoea	1 (1)	0	0
Pain in jaw	1 (1)	0	0
Painful respiration	1 (1)	0	0
Palpitations	1 (1)	0	0
Paranasal sinus hypersecretion	1 (1)	0	0
Pelvic pain	1 (1)	0	0

n (%)	Grade 1-2	Grade 3	Grade 4
Pleuritic pain	1 (1)	0	0
Polycythemia vera	1 (1)	0	0
Polyneuropathy	1 (1)	0	0
Poor quality sleep	1 (1)	0	0
Poor venous access	1 (1)	0	0
Portal vein thrombosis	1 (1)	0	0
Post procedural infection	0	1 (1)	0
Punctate keratitis	1 (1)	0	0
Rash pustular	1 (1)	0	0
Renal impairment	1 (1)	0	0
Respiratory failure	0	0	1 (1)
Respiratory syncytial virus infection	1 (1)	0	0
Retching	1 (1)	0	0
Rhinitis	1 (1)	0	0
Salivary gland pain	1 (1)	0	0
Scab	1 (1)	0	0
Sciatica	1 (1)	0	0
Seizure	0	1 (1)	0
Sinonasal obstruction	1 (1)	0	0
Sinus disorder	1 (1)	0	0
Sinus tachycardia	1 (1)	0	0
Sinusitis	1 (1)	0	0
Skin exfoliation	1 (1)	0	0
Skin ulcer	1 (1)	0	0

n (%)	Grade 1-2	Grade 3	Grade 4
Sleep apnea syndrome	1 (1)	0	0
Soft tissue infection	1 (1)	0	0
Spinal osteoarthritis	1 (1)	0	0
Stoma site hemorrhage	0	1 (1)	0
Supraventricular tachycardia	0	1 (1)	0
T-cell type acute leukemia	0	0	1 (1)
Thyroiditis acute	1 (1)	0	0
Tongue coated	1 (1)	0	0
Toothache	1 (1)	0	0
Trigger finger	1 (1)	0	0
Tumor exudation	1 (1)	0	0
Tumor obstruction	0	1 (1)	0
Tumor pruritus	1 (1)	0	0
Urinary retention	1 (1)	0	0
Urinary tract obstruction	0	1 (1)	0
Urinary tract pain	1 (1)	0	0
Urosepsis	1 (1)	0	0
Venous thrombosis	1 (1)	0	0
Ventricular extrasystoles	1 (1)	0	0
Visual acuity reduced	1 (1)	0	0
Vitamin D deficiency	1 (1)	0	0
Vitreous floaters	1 (1)	0	0
Vulvovaginal pain	1 (1)	0	0
White blood cell count decreased	1 (1)	0	0

n (%)	Grade 1-2	Grade 3	Grade 4
Wound infection	1 (1)	0	0

Supplemental Table 5 Treatment-related adverse events in patients receiving pacmilimab 10 mg/kg in dose-escalation and expansion phases (n=114) by severity grade

n (%)	Grade 1-2	Grade 3	Grade 4
Patients with at least 1	56 (49)	10 (9)	0
Fatigue	17 (15)	1 (1)	0
Aspartate aminotransferase increased	14 (12)	1 (1)	0
Alanine aminotransferase increased	12 (11)	0	0
Infusion related reaction	9 (8)	0	0
Rash	9 (8)	0	0
Arthralgia	8 (7)	0	0
Decreased appetite	8 (7)	0	0
Myalgia	7 (6)	0	0
Diarrhea	6 (5)	0	0
Vomiting	6 (5)	0	0
Blood alkaline phosphatase increased	5 (4)	0	0
Hypothyroidism	5 (4)	0	0
Lipase increased	3 (3)	2 (2)	0
Nausea	5 (4)	0	0
Pruritus	5 (4)	0	0
Anemia	4 (4)	0	0
Influenza like illness	4 (4)	0	0
Amylase increased	3 (3)	0	0
Dyspnea	3 (3)	0	0
Platelet count decreased	3 (3)	0	0
Pyrexia	3 (3)	0	0

n (%)	Grade 1-2	Grade 3	Grade 4
Rash maculo-papular	2 (2)	1 (1)	0
Blood creatinine increased	2 (2)	0	0
Cough	2 (2)	0	0
Dizziness	2 (2)	0	0
Dry mouth	2 (2)	0	0
Gamma-glutamyltransferase increased	0	2 (2)	0
Headache	2 (2)	0	0
Hot flush	2 (2)	0	0
Hypercalcemia	2 (2)	0	0
Lethargy	2 (2)	0	0
Muscular weakness	2 (2)	0	0
Night sweats	2 (2)	0	0
Paresthesia	2 (2)	0	0
Stomatitis	2 (2)	0	0
Thrombocytopenia	2 (2)	0	0
Weight decreased	2 (2)	0	0
Alopecia	1 (1)	0	0
Arthritis	1 (1)	0	0
Asthenia	1 (1)	0	0
Back pain	1 (1)	0	0
Balance disorder	1 (1)	0	0
Blood magnesium decreased	1 (1)	0	0
Breast pain	1 (1)	0	0
Chills	1 (1)	0	0
Constipation	1 (1)	0	0
Dysesthesia	1 (1)	0	0
Dysgeusia	1 (1)	0	0

n (%)	Grade 1-2	Grade 3	Grade 4
Dyspepsia	1 (1)	0	0
Dysphonia	1 (1)	0	0
Electrocardiogram QT prolonged	1 (1)	0	0
Enterocutaneous fistula	0	1 (1)	0
Epistaxis	1 (1)	0	0
Erythema	1 (1)	0	0
Head discomfort	1 (1)	0	0
Hepatic enzyme increased	1 (1)	0	0
Hyperglycemia	1 (1)	0	0
Hyperhidrosis	1 (1)	0	0
Hyperphosphatemia	1 (1)	0	0
Hypertension	0	1 (1)	0
Hyperthyroidism	1 (1)	0	0
Hyperuricemia	1 (1)	0	0
Hypoalbuminemia	1 (1)	0	0
Hypoglycemia	1 (1)	0	0
Hypokalemia	1 (1)	0	0
Keratitis	1 (1)	0	0
Lichenoid keratosis	1 (1)	0	0
Lymphopenia	1 (1)	0	0
Malaise	1 (1)	0	0
Migraine with aura	1 (1)	0	0
Mucosal inflammation	1 (1)	0	0
Muscle spasms	1 (1)	0	0
Musculoskeletal chest pain	1 (1)	0	0
Musculoskeletal pain	1 (1)	0	0
Myocarditis	0	1 (1)	0

n (%)	Grade 1-2	Grade 3	Grade 4
Myokymia	1 (1)	0	0
Neuropathy peripheral	1 (1)	0	0
Neutropenia	1 (1)	0	0
Neutrophil count decreased	1 (1)	0	0
Edema peripheral	1 (1)	0	0
Oral herpes	1 (1)	0	0
Pain	1 (1)	0	0
Peripheral sensory neuropathy	1 (1)	0	0
Polyneuropathy	1 (1)	0	0
Productive cough	1 (1)	0	0
Rash pustular	1 (1)	0	0
Scab	1 (1)	0	0
Thyroiditis acute	1 (1)	0	0
Tumor hemorrhage	1 (1)	0	0
Tumor pruritus	1 (1)	0	0
Visual acuity reduced	1 (1)	0	0
White blood cell count decreased	1 (1)	0	0