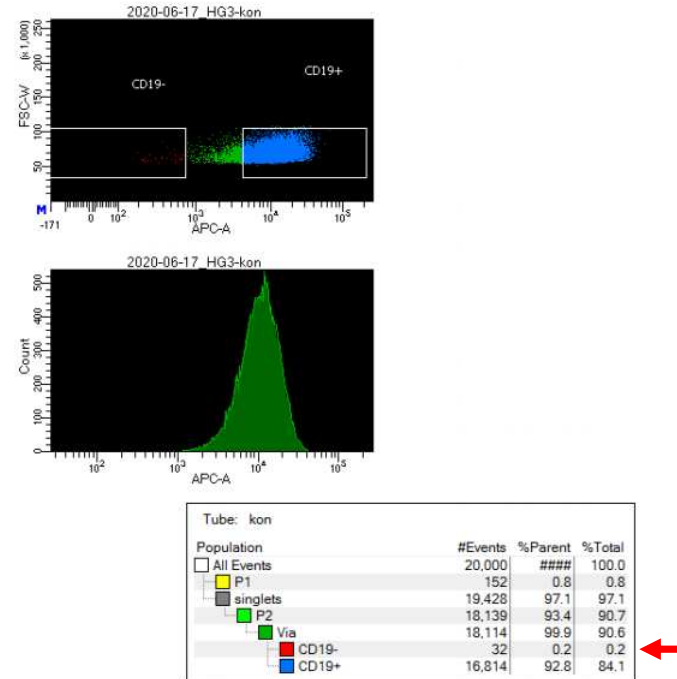
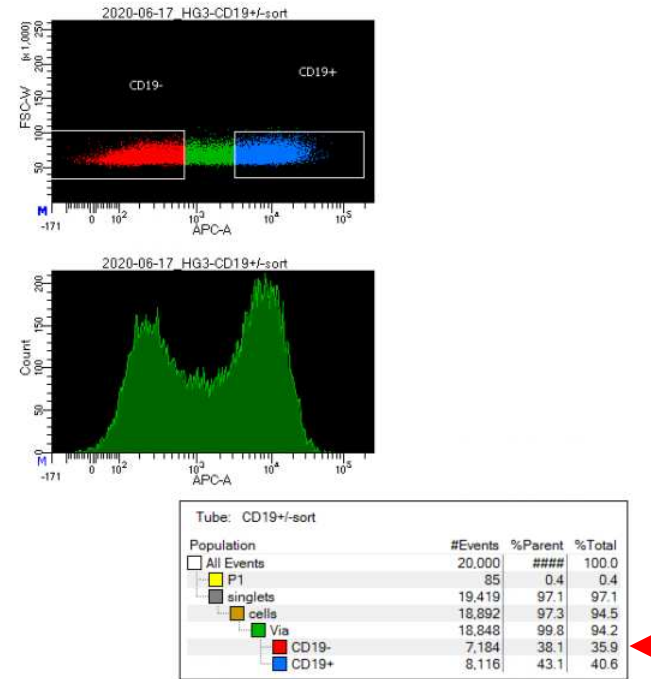


Originally infused HG3 cell line



Recurring tumor



Supplementary Figure S2. Comparison of surface CD19 expression on originally infused HG3 cell line (left panel) and on CLL cells harvested from a recurring tumor (right panel). In CD19-negative gate, only a negligible proportion of cells is detectable in the originally infused cells (marked by a red arrow).