

*Corticosteroid Therapy in HCC***Supplement****Impact of corticosteroid therapy on the outcomes of hepatocellular carcinoma treated with immune checkpoint inhibitor therapy.**

David J. Pinato et al.

**Contents****Tables.**

<b>Supplementary Table 1.</b> Geographical origin of HCC patients treated with ICI	<b>Page 4.</b>
<b>Supplementary Table 2.</b> The relationship between timing and indication of corticosteroid therapy.	<b>Page 4.</b>
<b>Supplementary Table 3.</b> Pairwise comparison of median duration of corticosteroid therapy (days) across indication.	<b>Page 5.</b>
<b>Supplementary Table 4.</b> Pairwise comparison of corticosteroid exposure expressed as median prednisone (PDN) equivalent dose in mg/day across indications.	<b>Page 5.</b>
<b>Supplementary Table 5.</b> Uni-variable analysis of factors contributing to overall survival.	<b>Page 6.</b>
<b>Supplementary Table 6.</b> Multivariable analysis of factors contributing to overall survival	<b>Page 7.</b>
<b>Supplementary Table 7.</b> Univariable analysis of factors contributing to progression-free survival.	<b>Page 8.</b>
<b>Supplementary Table 8.</b> Multivariable analysis of factors contributing to progression-free survival.	<b>Page 9.</b>
<b>Supplementary Table 9.</b> The relationship between corticosteroid exposure, response and survival: landmark time survival analysis.	<b>Page 10.</b>

*Corticosteroid Therapy in HCC***Figures.****Supplementary Figure 1.****Page 11.**

Kaplan-Meier curves illustrating the the relationship between indication for corticosteroid therapy (CT), OS and PFS.

**Supplementary Figure 2.****Page 13.**

The relationship between duration of corticosteroid therapy (CT), daily predisone (PDN)-equivalent dose and OS

**Supplementary Figure 3.****Page 14.**

The relationship between corticosteroid therapy (CT) OS (**A**) and PFS (**B**) in patients with Child Pugh A cirrhosis.

**Supplementary Figure 4.****Page 15.**

The relationship between timing of corticosteroid therapy (CT) and OS (**A**) and PFS (**B**) in patients with Child Pugh A cirrhosis.

*Corticosteroid Therapy in HCC*

## Corticosteroid Therapy in HCC

**Table S1.** Geographical Origin of HCC patients treated with ICI.

Region, Institution	Patients (%)
<b>Europe</b>	
Humanitas Cancer Center, Italy	37 (12)
Imperial College London, United Kingdom	6 (2)
Freiburg University, Germany	3 (1)
<b>North America</b>	
Mount Sinai, New York	93 (31)
MD Anderson Cancer Center, Texas	65 (21)
Kansas University Medical Center, Kansas	32 (10)
Weill Cornell Medical Center, New York	20 (7)
East Carolina Medical Centre, North Carolina	3 (1)
<b>Asia</b>	
Taipei Veterans General Hospital, Taiwan	45 (15)

**Table S2.** The relationship between timing and indication of corticosteroid therapy.

Indication	bCT (%)	cCT (%)	p value
Co-morbidity	0 (0)	6 (10)	<b>0.003*</b>
Palliation	2 (27)	3 (5)	
irAE	0 (0)	27 (44)	
Procedure/Prophylaxis	12 (73)	25 (41)	
TOTAL	14 (100)	61 (100)	

## Corticosteroid Therapy in HCC

**Table S3.** Pairwise comparison of median duration of corticosteroid therapy (days) across indication.

Indications	Duration Indication 1 (Days) Median (IQR)	Duration Indication 2 (Days) Median (IQR)	Mann Whitney U	Adjusted <sup>§</sup> p value (2-sided)
Procedure/Prophylaxis vs Co-morbidity	2 (2)	5.5 (6)	8.18	<b>0.02*</b>
Procedure/Prophylaxis vs Palliation	2 (2)	13.5 (9)	9.54	<b>0.01*</b>
Procedure/Prophylaxis vs irAE	2 (2)	17 (6)	43.71	<b>&lt;0.001*</b>
Comorbidity vs Palliation	5.5 (6)	13.5 (9)	6.66	0.65
Comorbidity vs irAE	5.5 (6)	17 (6)	2.99	1.0
Palliation vs irAE	13.5 (9)	17 (6)	1	1.0

§ Significance values adjusted by the Bonferroni correction for multiple tests.

**Table S4.** Pairwise comparison of corticosteroid exposure expressed as median prednisone (PDN) equivalent dose in mg/day across indications.

Indications	PDN equivalent dose Indication 1 Median (IQR)	PDN equivalent dose Indication 2 Median (IQR)	Mann Whitney U	Adjusted <sup>§</sup> p value (2-sided)
irAE vs Palliation	40 (45)	37.5 (47.5)	0.57	1.0
Palliation vs Procedure/Prophylaxis	37.5 (47.5)	50 (25)	4.11	1.0
irAE vs Comorbidity	40 (45)	67.5 (48.7)	0.83	1.0
irAE vs Procedure/Prophylaxis	40 (60)	50 (25)	11.3	<b>0.005*</b>
Palliation vs Comorbidity	37.5 (47.5)	67.5 (48.7)	0.11	1.0
Procedure/Prophylaxis vs Comorbidity	50 (25)	67.5 (48.7)	12.6	<b>0.002*</b>

§ Significance values adjusted by the Bonferroni correction for multiple tests.

## Corticosteroid Therapy in HCC

**Table S5.** Uni-variable analysis of factors contributing to overall survival.

Predictor	Univariable model	
	Hazard Ratio (95%CI)	P-value
<b>Objective response rate (ORR)</b> CR+PR/SD+PD	4.4 (2.5-7.8)	<0.001*
<b>AFP</b> <400 ng/ml >400 ng/ml	1.4 (1.0-1.9)	0.03*
<b>BCLC Stage</b> A-B C	1.6 (1.1-2.5)	0.02*
<b>Child Turcotte Pugh</b> A/B	1.9 (1.3-2.6)	<0.001
<b>ECOG PS</b> 0-1/2	1.8 (0.9-3.5)	0.10
<b>Immunotherapy Treatment</b> Monotherapy/ Combination	1.0 (0.6-1.8)	0.92
<b>Prior systemic therapy for HCC,</b> 0-1 >2	0.8 (0.4-1.6)	0.55
<b>Corticosteroid Therapy (any time)</b> Y/N	0.8 (0.8-1.3)	0.88
<b>Corticosteroid Therapy prior to ICI*</b> Y/N	1.2 (0.5-2.3)	0.54
<b>Corticosteroid Therapy during ICI**</b> Y/N	0.8 (0.5-1.2)	0.29
<b>Indication for Corticosteroid Therapy</b>	-	-
PDN <10 mg/d	0.8 (0.5-1.1)	0.20
PDN ≥10 mg/d cancer-unrelated	1.7 (0.7-3.8)	0.23
PDN ≥10 mg/d cancer-related		

\*Defined as PDN ≥10 mg/d pre-ICI

\*\*Defined as PDN ≥10 mg/d during ICI

## Corticosteroid Therapy in HCC

Table S6. Multi-variable analysis of factors contributing to overall survival.

Predictor	Multivariable model 1		Multivariable model 2		Multivariable model 3	
	Hazard Ratio (95%CI)	P-value	Hazard Ratio (95%CI)	P-value	Hazard Ratio (95%CI)	P-value
<b>BCLC Stage</b> A-B C	1.4 (0.8-2.4)	0.13	1.5 (0.9-2.5)	0.13	1.4 (0.8-2.3)	0.19
<b>AFP</b> <400 ng/ml >400 ng/ml	1.1 (0.7-1.8)	0.50	1.1 (0.8-1.7)	0.62	1.1 (0.7-1.7)	0.76
<b>Child Turcotte Pugh</b> A/B	2.3 (1.4-3.5)	<0.001*	2.2 (1.4-3.5)	<0.001*	2.2 (1.4-3.5)	<0.001*
<b>ECOG PS</b> 0-1/2	1.2 (0.5-2.7)	0.61	1.2 (0.6-2.7)	0.60	1.3 (0.6-2.9)	0.46
<b>Immunotherapy Treatment</b> Monotherapy/ Combination	1.1 (0.6-2.0)	0.75	1.1 (0.6-1.9)	0.80	1.1 (0.6-2.0)	0.68
<b>Corticosteroid Therapy prior to ICI*</b> Y/N	3.3 (0.4-24.4)	0.23	-	-	-	-
<b>Corticosteroid Therapy during ICI**</b> Y/N	-	-	0.7 (0.4-1.3)	0.23	-	-
<b>Corticosteroid Therapy Indication</b> PDN <10 mg/d PDN ≥10 mg/d cancer-unrelated PDN ≥10 mg/d cancer-related	-	-	-	-	- 0.4 (0.2-0.9) 2.1 (0.9-5.3)	<b>0.02*</b> <b>0.03*</b> 0.09

## Corticosteroid Therapy in HCC

**Table S7.** Uni-variable analysis of factors contributing to progression-free survival.

Predictor	Univariable model	
	Hazard Ratio (95%CI)	P-value
<b>BCLC Stage</b> A-B C	1.4 (0.9-2.1)	0.06
<b>AFP</b> <400 ng/ml/ >400 ng/ml	1.1 (0.8-1.5)	0.53
<b>Child Turcotte Pugh</b> A/B	1.2 (0.8-1.7)	0.32
<b>ECOG PS</b> 0-1/2	2.3 (1.3-4.3)	<b>0.005*</b>
<b>Immunotherapy Treatment</b> Monotherapy/ Combination	0.9 (0.5-1.6)	0.68
<b>Prior systemic therapy for HCC,</b> 0-1 >2	1.4 (0.8-2.4)	0.13
<b>Corticosteroid Therapy</b> Y/N	0.8 (0.6-1.2)	0.22
<b>Corticosteroid Therapy prior to ICI*</b> Y/N	0.7 (0.3-1.5)	0.37
<b>Corticosteroid Therapy during ICI**</b> Y/N	0.9 (0.6-1.3)	0.42
<b>Indication for Corticosteroid Therapy</b> PDN <10 mg/d PDN ≥10 mg/d cancer-unrelated PDN ≥10 mg/d cancer-related	- 0.7 (0.5-1.0) 3.4 (1.6-7.4)	<b>0.001*</b> 0.07 <b>0.002*</b>



## Corticosteroid Therapy in HCC

**Table S8.** Multi-variable analysis of factors contributing to progression-free survival.

Predictor	Multivariable model 1		Multivariable model 2		Multivariable model 3	
	Hazard Ratio (95%CI)	P-value	Hazard Ratio (95%CI)	P-value	Hazard Ratio (95%CI)	P-value
<b>BCLC Stage</b> A-B C	1.0 (0.7-1.7)	0.70	1.1 (0.6-1.7)	0.75	1.1 (0.4-1.4)	0.74
<b>AFP</b> <400 ng/ml/ >400 ng/ml	1.0 (0.9-1.4)	0.75	0.9 (0.6-1.3)	0.57	0.8 (0.5-1.2)	0.44
<b>Immunotherapy Treatment</b> Monotherapy/ Combination	0.7 (0.4-1.3)	0.35	0.7 (0.4-1.3)	0.29	0.7 (0.4-1.3)	0.33
<b>ECOG PS</b> 0-1/2	2.0 (1.0-4.0)	<b>0.03*</b>	2.1 (1.1-4.0)	<b>0.03*</b>	2.4 (1.2-4.6)	<b>0.001*</b>
<b>Corticosteroid Therapy prior to ICI*</b> Y/N	3.9 (0.5-28.6)	0.17	-	-	-	-
<b>Corticosteroid Therapy during ICI**</b> Y/N	-	-	0.7 (0.4-1.2)	0.16	-	-
<b>Indication for Corticosteroid Therapy</b> PDN <10 mg/d PDN ≥10 mg/d cancer-unrelated PDN ≥10 mg/d cancer-related	-	-	-	-	- 0.6 (0.3-1.0) 4.4 (1.7-11.1)	<b>0.001*</b> <b>0.05*</b> <b>0.002*</b>

## Corticosteroid Therapy in HCC

**Table S9.** The relationship between corticosteroid exposure, response and survival: landmark time survival analysis.

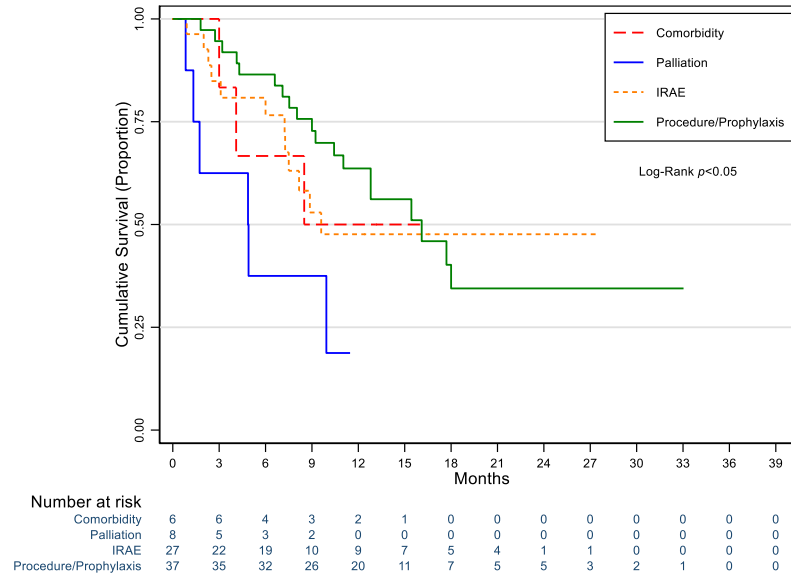
Corticosteroid (CT) Exposure	Time point of CT exposure (month)	Best Response	N	Death n (%)	Progression n (%)	Median PFS months (95% CI)	Median OS months (95% CI)
<b>PDN &gt;10 mg during ICI</b>	first 3 mo.	CR + PR	1	0 (0)	0 (0)	NR	NR
		SD + PD	18	5 (28)	8 (44)	3.3 (1.4 – 12.1)	7.5 (2.5 – 9.0)
		All	19	5 (26)	8 (42)	4.6 (1.4 – 9)	7.5 (2.5 – NR)
	first 6 mo.	CR + PR	3	0 (0)	0 (0)	8.2 (7.5 – NR)	8.2 (7.5 – NR)
		SD + PD	24	7 (29)	13 (54)	4.6 (2.4 – 8.4)	8.5 (3.3 – 15.4)
		All	27	7 (26)	13 (48)	6.1 (2.5 – 8.4)	8.2 (7.1 – 9.9)
	first 9 mo.	CR + PR	3	2 (67)	3 (100)	8.2 (7.5 – NR)	8.2 (7.5 – NR)
		SD + PD	27	15 (56)	17 (63)	5.5 (2.5 – 8.4)	8.5 (4.1 – 10.4)
		All	30	17 (57)	20 (67)	6.3 (2.6 – 8.4)	8.2 (7.1 – 10.4)
	first 12 mo.	CR + PR	5	2 (40)	3 (60)	9.0 (7.5 – NR)	NR (7.5 – NR)
		SD + PD	27	17 (63)	17 (63)	5.5 (2.5 – 8.4)	8.5 (4.1 – 10.4)
		All	32	19 (59)	20 (62)	6.8 (3.3 – 9.0)	8.5 (7.3 – 12.8)
	any time*	CR + PR	14	3 (21)	4 (29)	NR (8.2 – NR)	NR (8.2 – NR)
		SD + PD	48	26 (54)	33 (69)	6.1 (3.1 – 8.9)	9.9 (7.2 – 17.7)
		All	62	29 (48)	37 (60)	8.2 (5.6 – 12.5)	16.1 (8.9 – NR)
<b>PDN &gt;10 mg prior to ICI</b>	CR + PR	2	1 (50)	0 (0)	NR	12.8 (12.8 – NR)	
	SD + PD	12	9 (75)	7 (58)	5.5 (1.4 – NR)	9.2 (2.7 – NR)	
	All	14	10 (71)	7 (50)	6.8 (2.0 – NR)	10.4 (4.9 – 18)	
<b>PDN 0 to &lt;10 mg**</b>	CR + PR	45	10 (22)	11 (25)	NR (19.0 – NR)	23.3 (18.7 – NR)	
	SD + PD	166	100 (60)	111 (67)	3.7 (3.2 – 4.2)	9.2 (7.3 – 11.7)	
	All	211	110 (52)	122 (58)	4.8 (4.0 – 6.9)	12.3 (9.8 – 16.1)	

Abbreviations: NR = Not reached; \*2 patients without response evaluation; \*\*15 patients without response evaluation

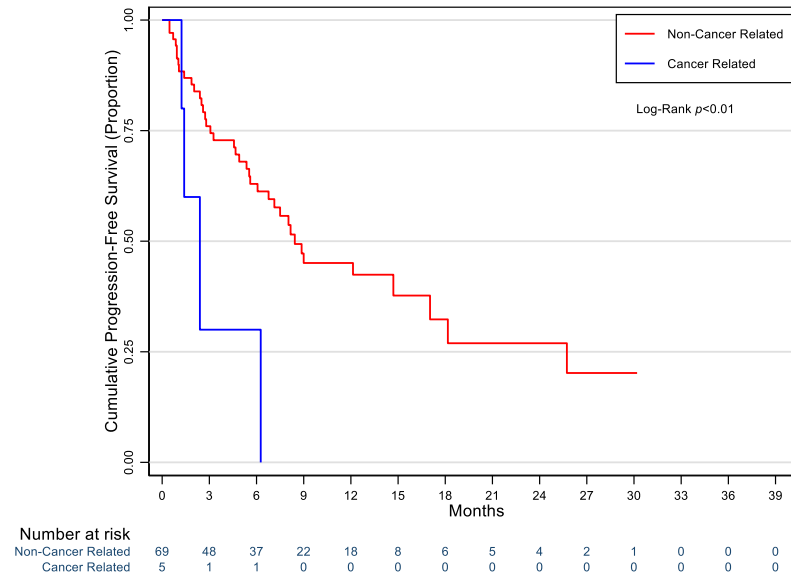
*Corticosteroid Therapy in HCC*

**Figure S1.** Kaplan-Meier curves illustrating the relationship between indication for corticosteroid therapy (CT) and OS (A). Panels B and C highlight the difference in PFS (B) and OS (C) between patients receiving corticosteroid therapy for cancer-related versus non cancer-related indications.

**A.**

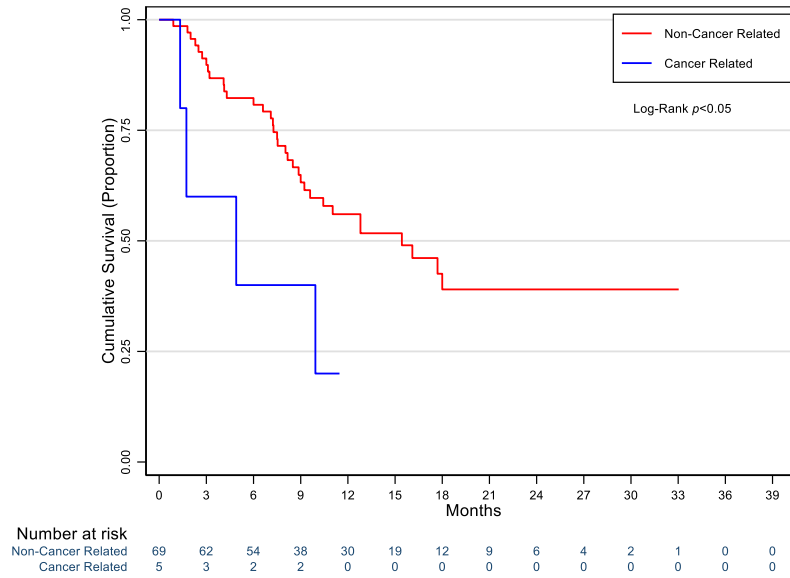


**B.**



*Corticosteroid Therapy in HCC*

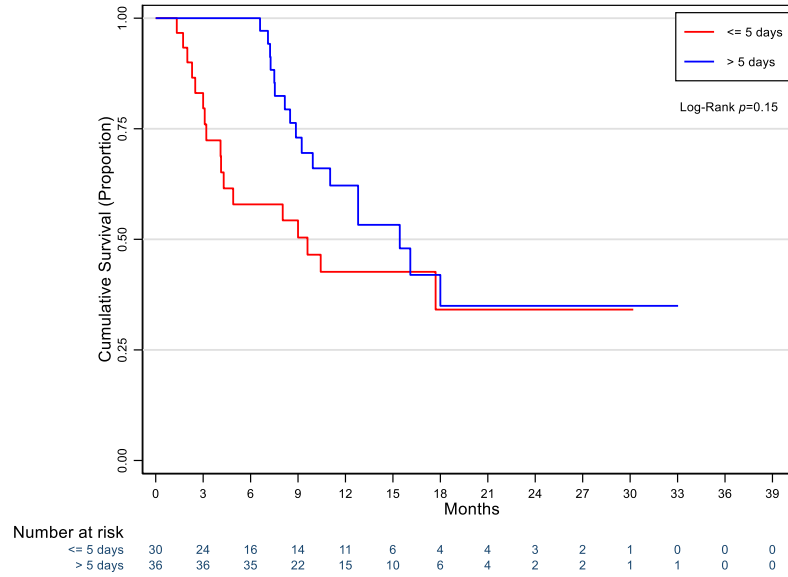
**C.**



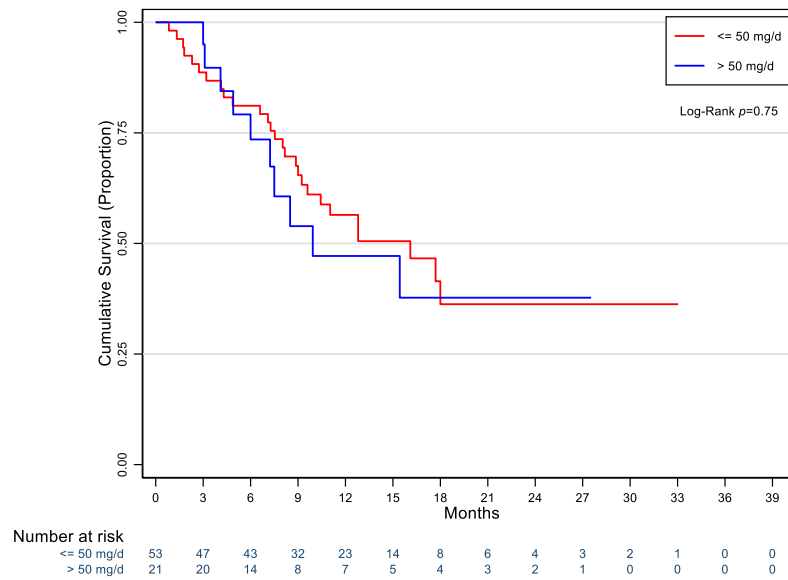
*Corticosteroid Therapy in HCC*

**Figure S2.** The relationship between duration of corticosteroid therapy (CT, **A**) daily predisone (PDN)-equivalent dose (**B**) and OS.

**A.**



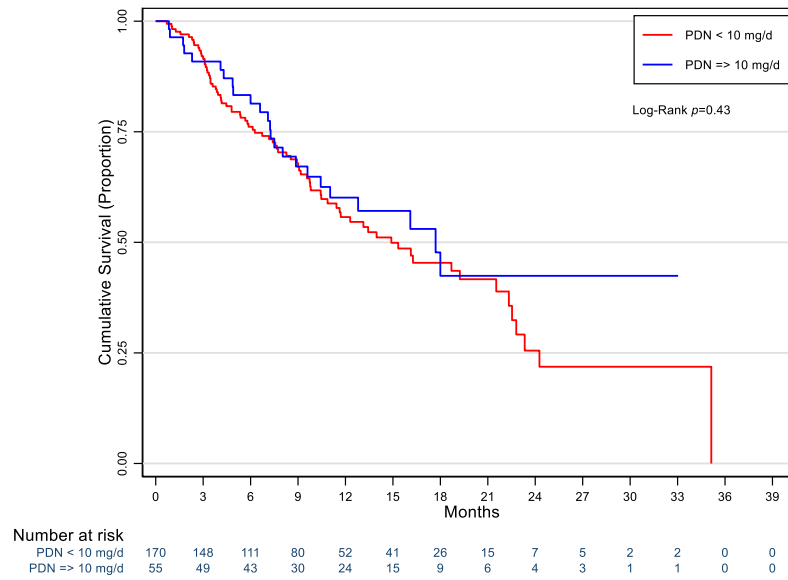
**B.**



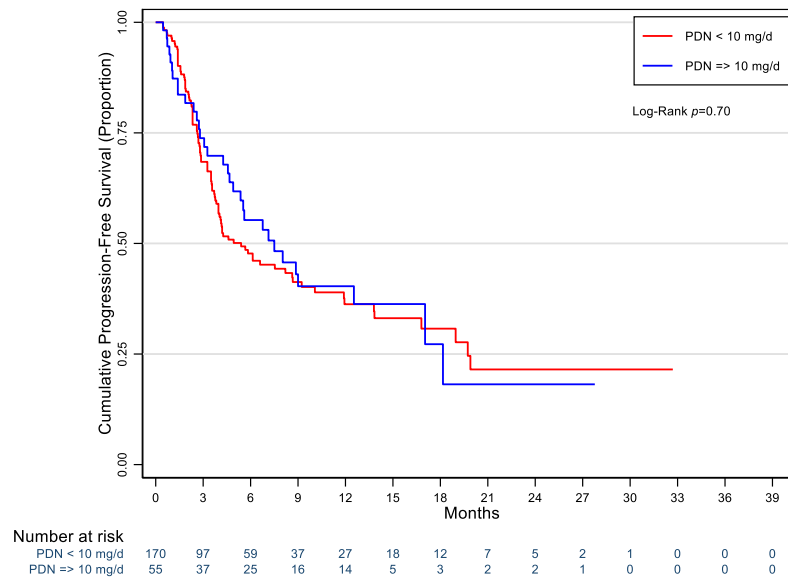
*Corticosteroid Therapy in HCC*

**Figure S3.** The relationship between corticosteroid therapy (CT) OS (A) and PFS (B) in patients with Child Pugh A cirrhosis.

**A.**



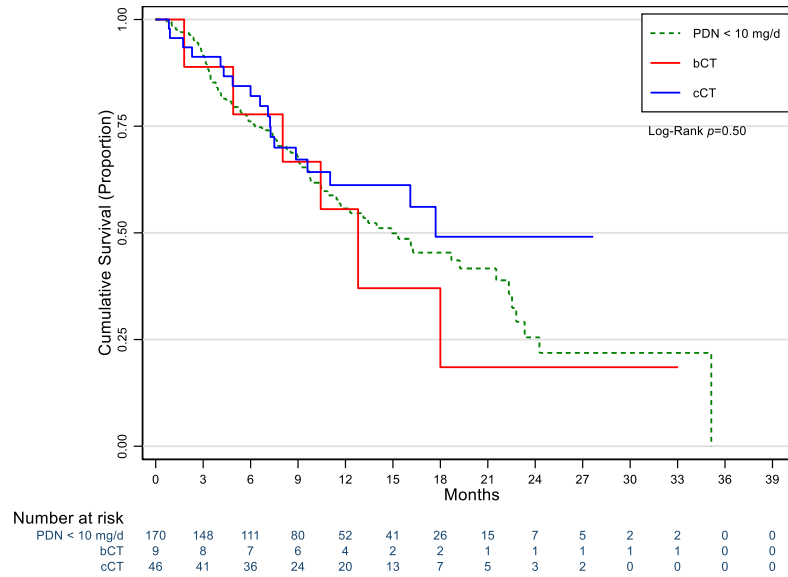
**B.**



*Corticosteroid Therapy in HCC*

**Figure S4.** The relationship between timing of corticosteroid therapy (CT) and OS (A) and PFS (B) in patients with Child Pugh A cirrhosis.

**A.**



**B.**

