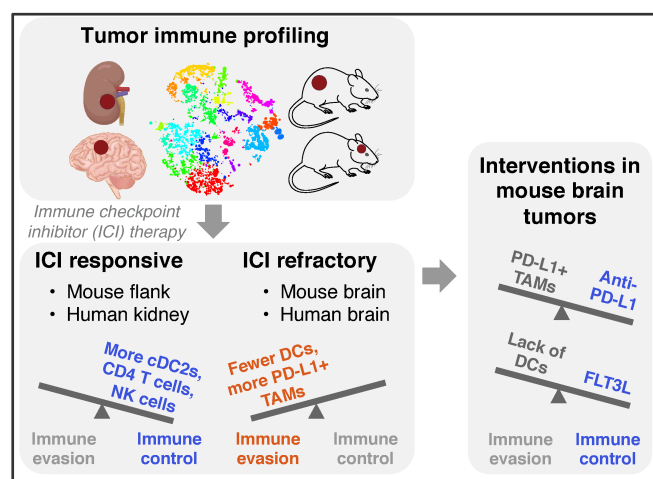


## Graphical Abstract

### Deep immune profiling reveals targetable mechanisms of immune evasion in immune checkpoint inhibitor-refractory glioblastoma



#### Authors

Erin F. Simonds, Edbert D. Lu, Oscar Badillo, Shokoufeh Karimi, Eric V. Liu, Whitney Tamaki, Chiara Rancan, Kira M. Downey, Jacob Stultz, Meenal Sinha, Lauren K. McHenry, Nicole M. Nasholm, Pavlina Chuntova, Anders Sundström, Vassilis Genoud, Shilpa A. Shahani, Leo D. Wang, Christine E. Brown, Paul R. Walker, Fredrik J. Swartling, Lawrence Fong, Hideho Okada, William A. Weiss, and Mats Hellström

#### Correspondence

mats.hellstrom@igp.uu.se, hideho.okada@ucsf.edu, waweiss@gmail.com

#### In Brief

In mice and humans, tumors that were sensitive to immune checkpoint inhibition (ICI) had consistent immunological features. A mouse model of glioma that is refractory to ICI was sensitized by increasing antigen presentation through a variety of approaches.