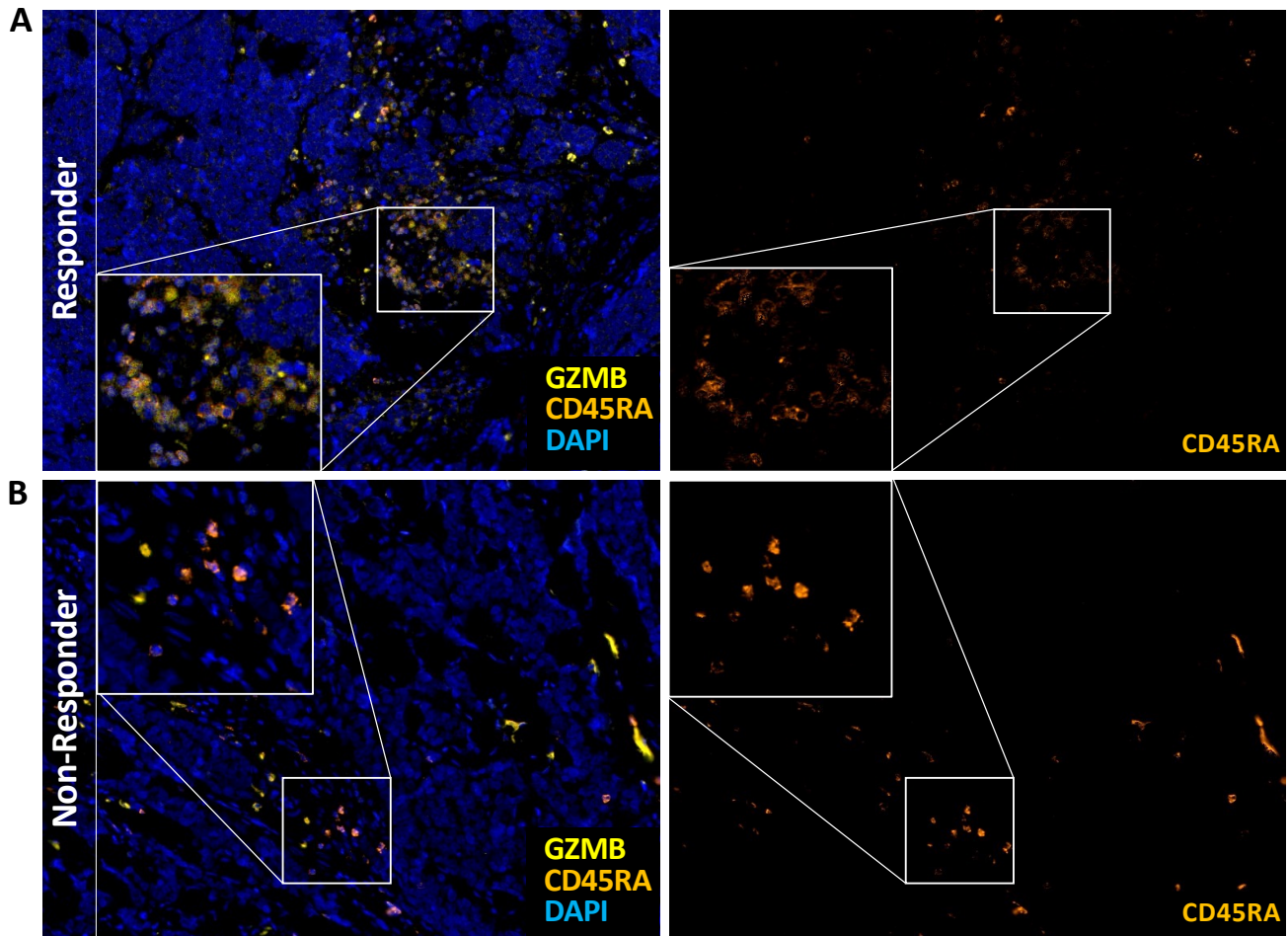


## Supplementary Figure 5



Excerpt of the multiplexed immunofluorescence staining of pre-treatment tumor tissue from a representative patient with disease control (A) and disease progression (B). Left: Co-expression of CD45RA (orange) and GZMB (yellow) displays high abundance of effector T cells in disease control. Right: Overall elevated presence of CD45RA positive cells in therapy responding patients. (20x magnification, DAPI counterstain)