

Supplemental materials

Contents

1. Search strategy	2
2. The inclusion criteria.....	3
3. Characteristics of included studies.....	4
4. Risk of bias in cohort study	5
5. Supplemental figure legend	6
6. Supplemental figure	7

The inclusion criteria

- (a) prospective phase I, phase II or phase III clinical trials for pathologically diagnosed stage I-III NSCLC;
- (b) neoadjuvant therapy with at least one ICI;
- (c) reporting ypT(MPR), ypT0 , and nodal downstaging as clinical outcomes.

Supplementary Table 1 Characteristics of included studies.

First author	Intervention model	Masking	Study type	Study phase	Recruitment criteria	Type of article	Regimen
Provencio M, 2020 [2]	Single-arm Preoperative pathological evaluation of mediastinal lymph nodes: thoracotomy	Open-Label	Cohort study	II	Stage IIIA, EBUS-TBNA, mediastinoscopy or	Article	Nivolumab + paclitaxel + carboplatin
Rothschild SI, 2021 [3]	Single-arm Preoperative pathological evaluation of mediastinal lymph nodes: EBUS-TBNA or mediastinoscopy	Open-Label	Cohort study	II	Stage IIIA (N2)	Article	Cisplatin + docetaxel + sequential durvalumab
Shu CA, 2020 [4]	Single-arm Preoperative pathological evaluation of mediastinal lymph nodes: no required	Open-Label	Cohort study	II	Stage IB–IIIA	Article	Atezolizumab + nab-paclitaxel + carboplatin
Forde PM, 2018 [5]	Single-arm Preoperative pathological evaluation of mediastinal lymph nodes: EBUS-TBNA or mediastinoscopy	Open-Label	Cohort study	II	Stage I–IIIA	Article	Nivolumab
Gao S, 2020 [6]	Single-arm Preoperative pathological evaluation of mediastinal lymph nodes: no required	Open-Label	Cohort study	Ib	Stage IA–IIIB	Article	Sintilimab
Zhao Z, 2021 [7]	Single-arm Preoperative pathological evaluation of mediastinal lymph nodes: EBUS-TBNA or mediastinoscopy	Open-Label	Cohort study	II	Stage IIIA–IIIB	Article	pemetrexed/ nab-paclitaxel + carboplatin + toripalimab

EBUS-TBNA: Endobronchial ultrasound transbronchial needle aspiration.

Supplemental Table 2 Risk of bias in cohort study

Study	Selection	comparability	outcome	score
-------	-----------	---------------	---------	-------

	Representativeness of the exposed	Selection of the non-exposed	Ascertainment of exposure	Outcome of interest was not present	Comparability of Cohorts on the Basis	Assessment of Outcome	Enough follow-up	Adequacy of follow up	
Provencio M, 2020 [2]	1	N/A	1	1	N/A	1	1	1	6
Rothschild SI, 2021 [3]	1	N/A	1	1	N/A	0	0	1	4
Shu CA, 2020 [4]	1	N/A	1	1	N/A	1	0	1	5
Forde PM, 2018 [5]	1	N/A	1	1	N/A	1	1	1	6
Gao S, 2020 [6]	1	N/A	1	1	N/A	1	0	1	5
Zhao Z, 2021 [7]	1	N/A	1	1	N/A	1	1	1	6

Supplemental figure legend**Supplemental figure 1**

Flow diagram of publication search

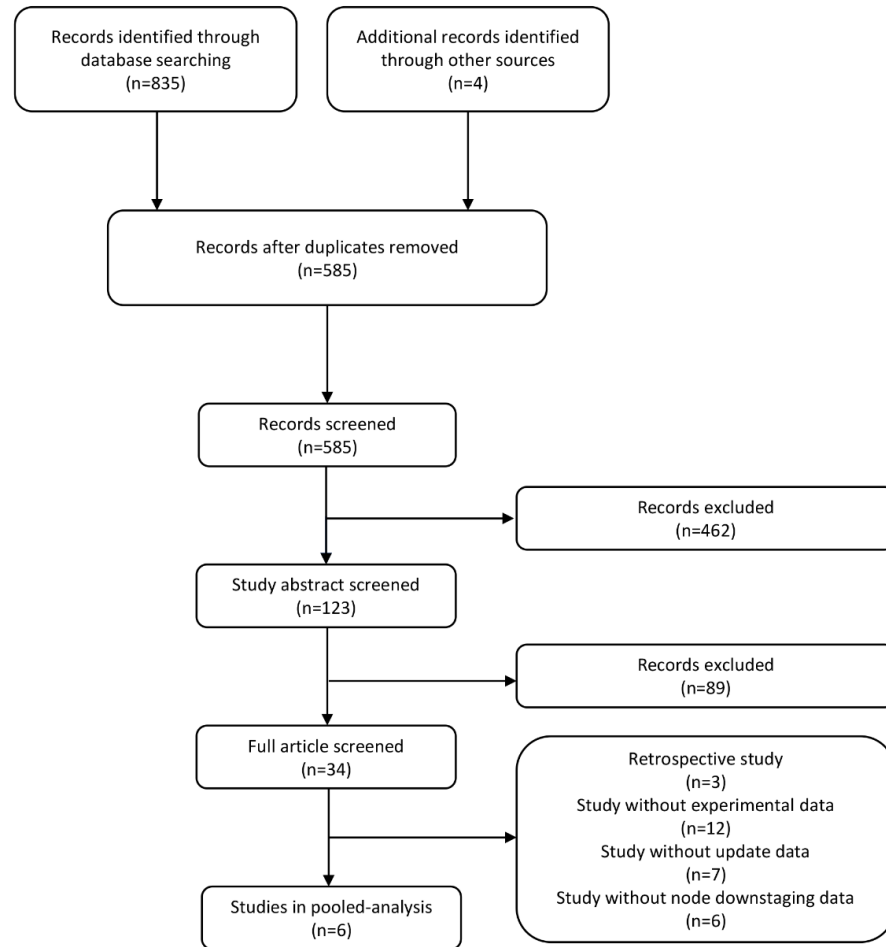
Supplemental figure 2

Supplemental figure 2A Funnel plot of major pathological response versus nodal downstaging

Supplemental figure 2B Funnel plot of complete pathological response versus complete nodal clearance

Supplemental figure 2C Funnel plot of major pathological response versus complete nodal clearance

Supplemental figure 1



Supplemental figure 2

