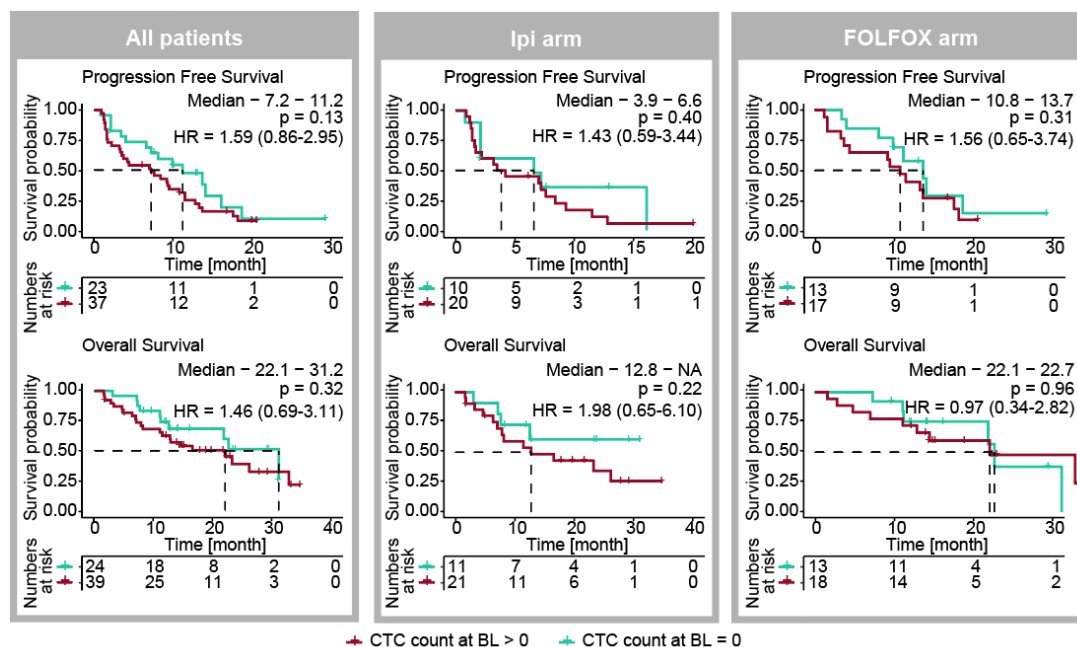


Supplemental Figure



Supplemental Figure S1: Survival probability in relation to the number of circulating tumor cells (CTC) at baseline. Kaplan-Meier plots of progression-free survival (PFS) and overall survival (OS) of all patients (left row), Ipi arm (middle row) and FOLFOX arm (right row). Patients with CTC counts > 0 are grouped versus patients with CTC counts = 0 before initiation of treatment. The p-values were calculated using log-rank test. Median survival is given in month. HR = hazard ratio of cox regression including 95% confidence intervals in brackets.

