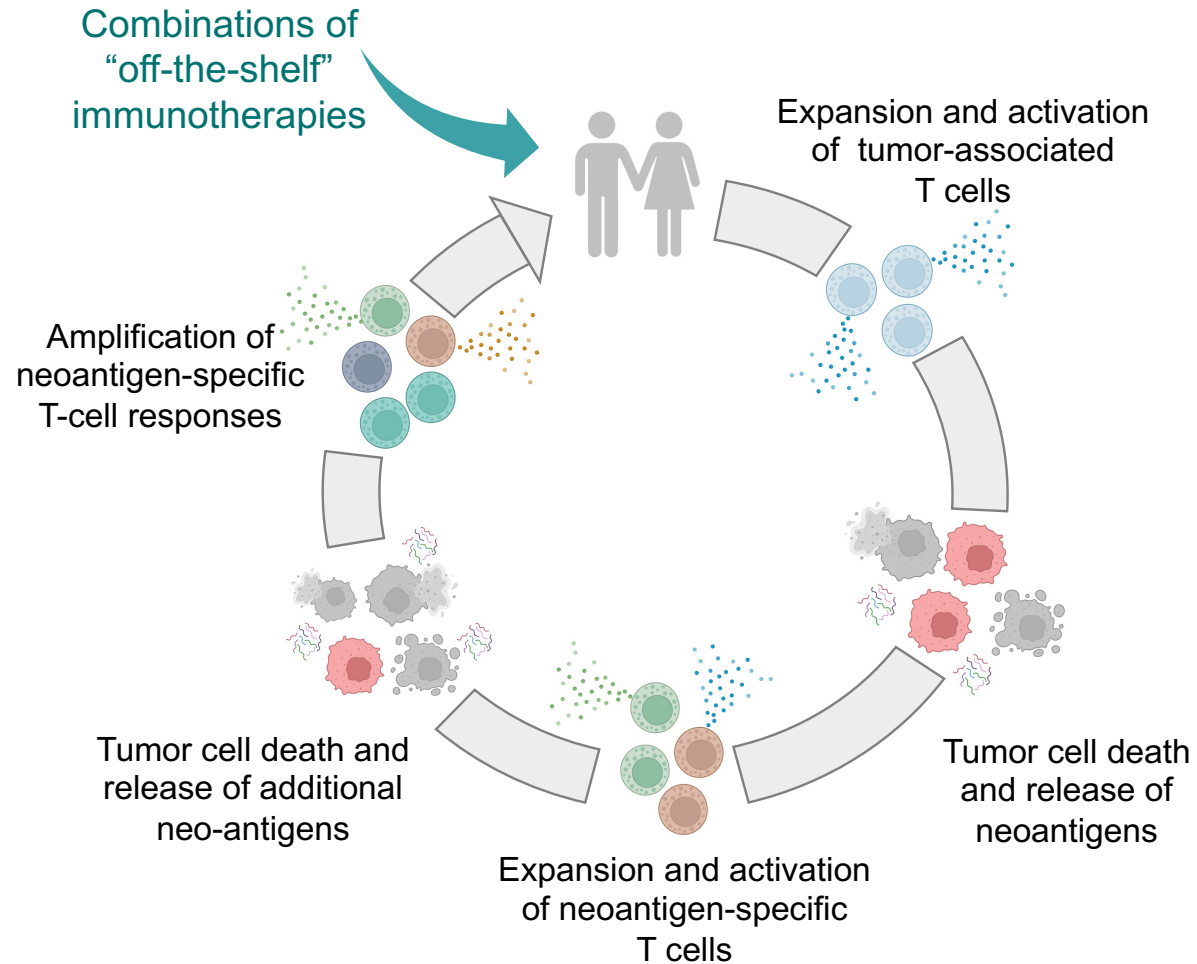


Hypothesis: The Generation of T Cells Directed Against Neopeptides Employing Immune-mediating Agents Other Than Neopeptide Vaccines



Authors

Jeffrey Schlom, Renee N. Donahue, Claudia Palena, Sofia R. Gameiro, James W. Hodge, Duane H. Hamilton, James L. Gulley

Correspondence

schlomj@mail.nih.gov

In Brief

The development of vaccines directed against patient-specific tumor neopeptides, while labor intensive, is an active and extremely productive area of cancer immunotherapy. We hypothesize that in some circumstances the use of rationally designed combinations of “off-the-shelf” agents may prove an additional path to enable the patient to produce his/her own “neopeptide vaccine” in situ. Examples are provided in both preclinical and clinical studies in which this approach has led to the generation of T cells directed against tumor-derived neopeptides with consequent anti-tumor activity.