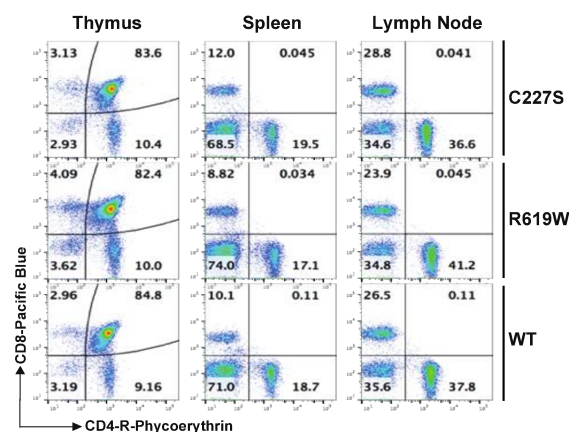
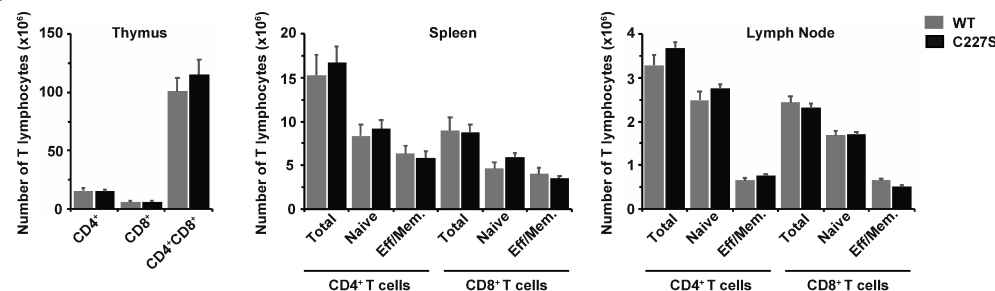


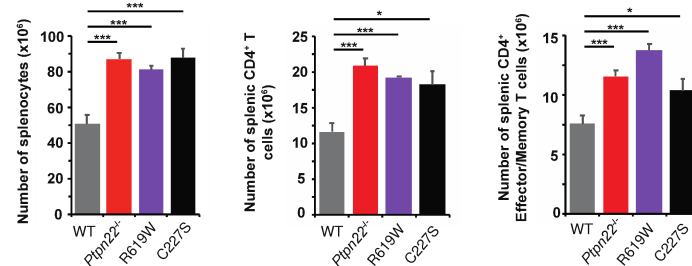
A



B



C



### Supplementary Figure S7. *Ptpn22*<sup>619W/619W</sup> and *Ptpn22*<sup>227S/227S</sup> mice phenocopy *Ptpn22*<sup>-/-</sup> mice.

**A.** T cell composition of thymus, spleen and LNs of ~8-week-old WT, *Ptpn22*<sup>619W/619W</sup> and *Ptpn22*<sup>227S/227S</sup> mice. **B.** T cell composition of thymus, spleen and LNs of ~8-week old WT and *Ptpn22*<sup>227S/227S</sup> mice. **C.** Splenic CD4<sup>+</sup> T cell composition of >4-month old WT, *Ptpn22*<sup>619W/619W</sup> and *Ptpn22*<sup>227S/227S</sup> mice. *n* = 3-6 mice/group. Data are mean ± SD. *P* values determined by using two-tailed T-Test. \* *P* < 0.05, \*\*\* *P* < 0.001.