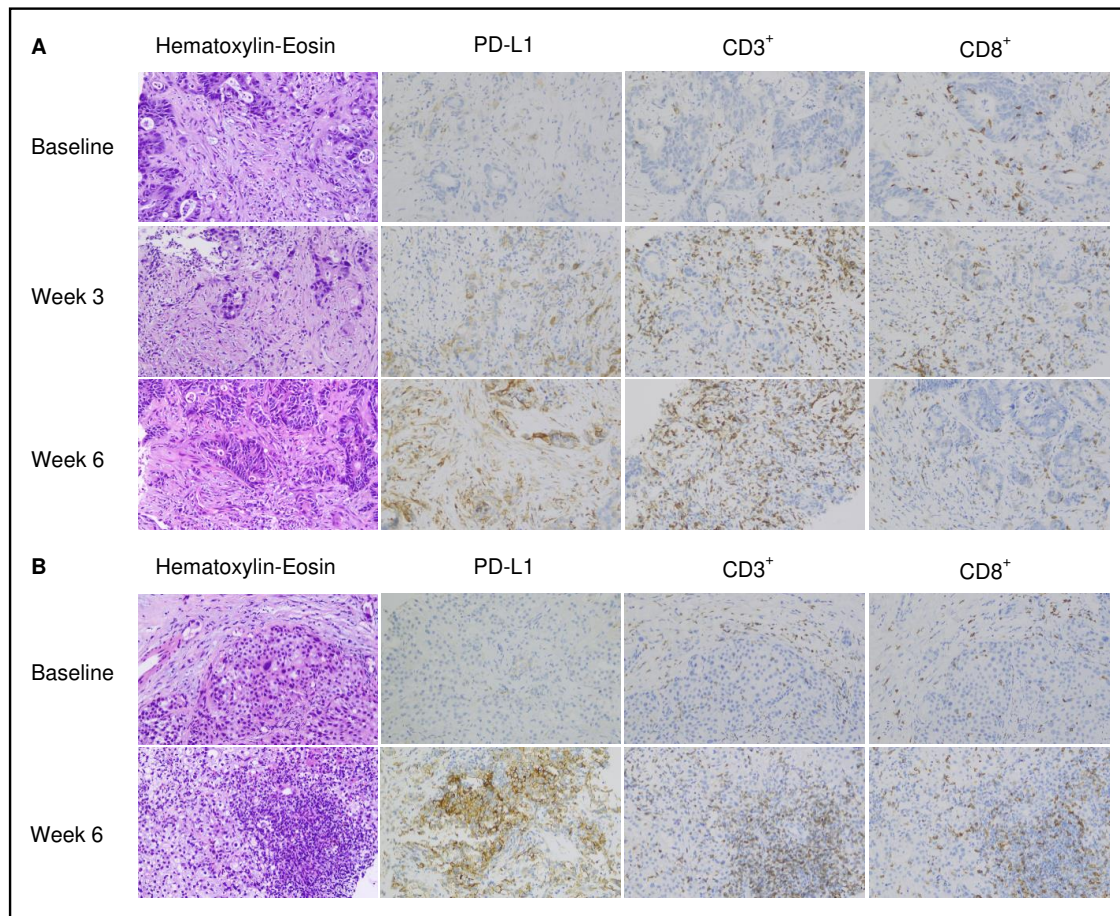


1. Supplementary Figure



Supplementary Figure 1: OH2 injection increased PD-L1 expression, attracted CD3⁺ and CD8⁺ lymphocytes in the tumor microenvironment regardless of clinical response (magnification ×200).

(A) Patient with liver metastases from rectal cancer who responded to single agent OH2. (B) Patient with liver metastases from esophageal cancer who had progressive disease after treatment with single agent OH2.

2. Supplementary Table

Supplementary Table 1 Biodistribution and activity of single agent OH2 in phase 2

Patient	Dose level (CCID50/mL)	Tumor Types	Blood OH2 viral loads (copies/ μ L, timepoint)	Blood anti-GM-CSF antibody (timepoint)	Best response (RECIST v1.1/iRECIST)
12	10^7	Esophageal cancer	BQL	Negative	PD/iUPD
13	10^7	Esophageal cancer	BQL	Negative	PD/iUPD
14	10^7	Esophageal cancer	BQL	Negative	PD/iUPD
15	10^7	Colon cancer	BQL	Negative	NA
16	10^7	Colon cancer	BQL	Negative	SD/iSD
17	10^7	Rectal cancer	BQL	Negative	PD/iUPD
18	10^7	Colon cancer	BQL	Negative	PD/iUPD
19	10^7	Colon cancer	BQL	Negative	PD/iUPD
20	10^7	Colon cancer	BQL	Negative	PD/iUPD
21	10^7	Esophageal cancer	BQL	Negative	NA
22	10^7	Intrahepatic cholangiocarcinoma	BQL	Negative	PD/iUPD
23	10^7	Colon cancer	BQL	Negative	PD/iUPD
24	10^7	Colon cancer	BQL	Negative	PD/iUPD
25	10^7	Appendix cancer	NA	NA	SD/iSD
26	10^7	Gastric cancer	NA	NA	SD/iSD
27	10^7	Esophageal cancer	NA	NA	SD/iSD
28	10^7	Gastric cancer	NA	NA	NA
29	10^7	Gastric cancer	NA	NA	NA

(Continued on the following page)

Supplementary Table 1 Biodistribution and activity of single agent OH2 in phase 2 (cont'd)

Patient	Dose level (CCID50/mL)	Tumor Types	Blood OH2 viral loads (copies/ μ L, timepoint)	Blood anti-GM-CSF antibody (timepoint)	Best response (RECIST v1.1/iRECIST)
30	10^7	Esophageal cancer	BQL	Negative	NA
31	10^7	Esophageal cancer	BQL	Negative	PD/iUPD
32	10^7	Malignant melanoma	BQL	Negative	NA
33	10^7	Skin cancer	NA	Negative	PD/iUPD
34	10^7	Esophageal cancer	NA	Negative	PD/iUPD
35	10^7	Malignant melanoma	NA	NA	NA
36	10^7	Esophageal cancer	NA	NA	NA
37	10^7	Malignant melanoma	BQL	Negative	PD/iUPD
38	10^7	Head and neck cancer	NA	NA	PD/iUPD
39	10^7	Rectal cancer	NA	NA	NA
40	10^7	Gastric cancer	NA	NA	SD/iSD

Abbreviations: BQL, below quantifiable limit; PD, progressive disease; SD, stable disease; iUPD, immune-unconfirmed progressive disease; NA, not available