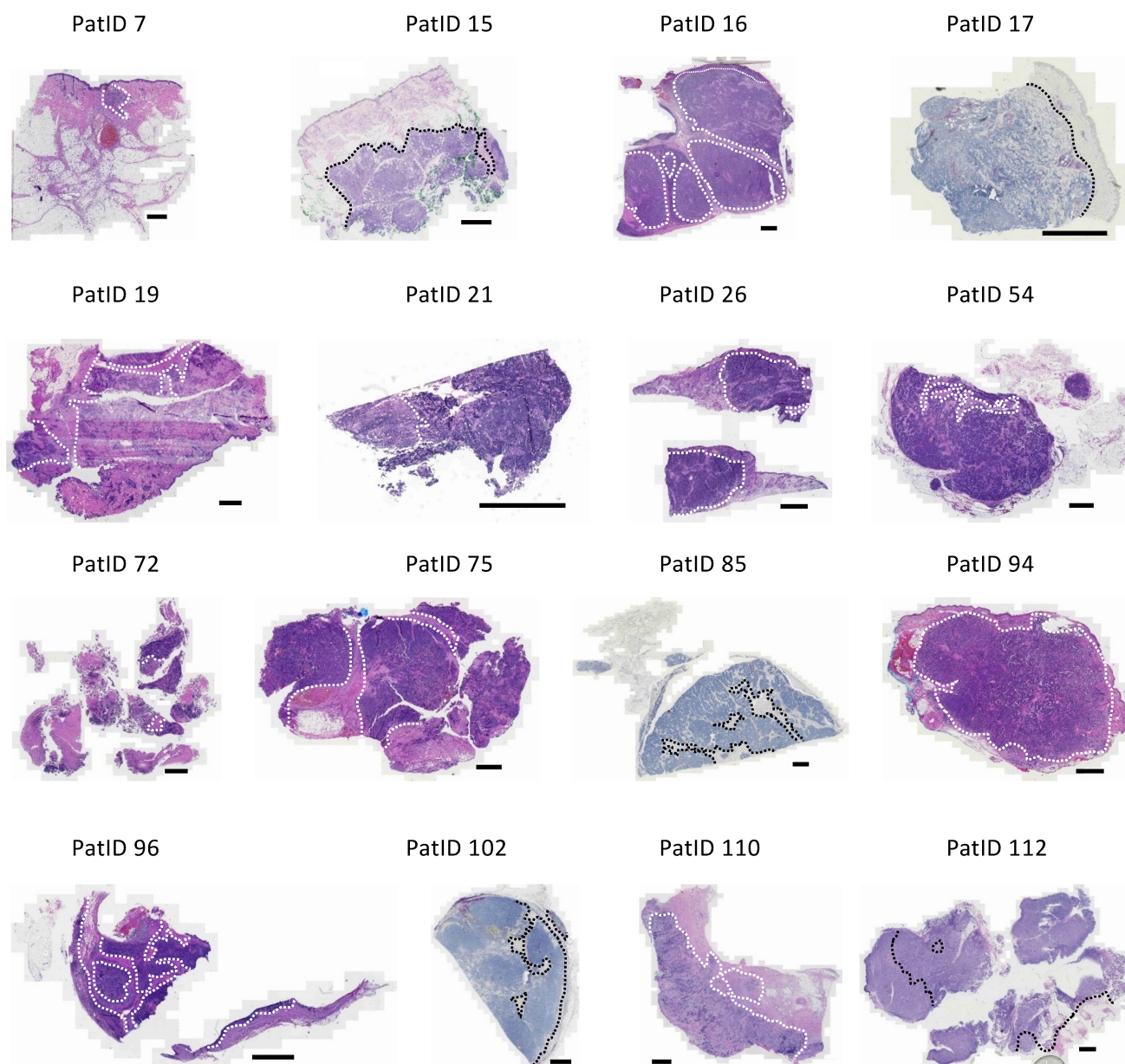


Supplementary Figure 4



Whole slide scans of H&E stained tissue samples used for mIF based analysis of the immune infiltrate. Dotted lines (black/white) indicate separation between juxtra-tumoral and intra-tumoral areas (scale bar 2mm). Out of 114 samples, 21 were subjected to mIF analysis. From these, 16 samples were already H&E stained for diagnostic reasons and were used here to depict the intra- and juxtra-tumoral regions. Slides were scanned with the Zeiss AxioScanZ.1 with 10x magnification.