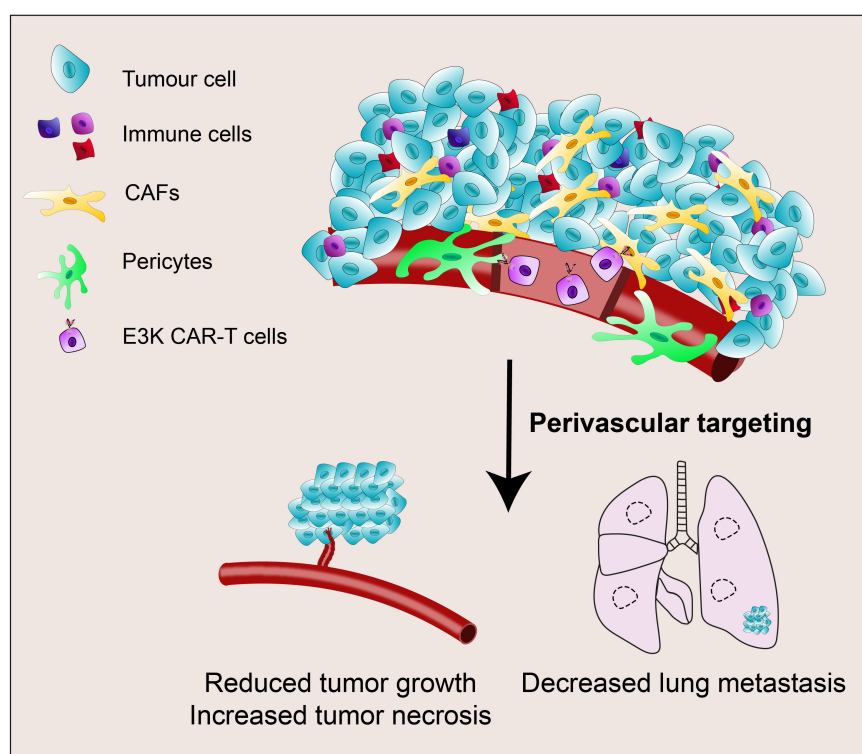


## Targeting the activated microenvironment with endosialin (CD248)-directed CAR-T cells ablates perivascular cells to impair tumor growth and metastasis



### Authors

Sarah L. Ash, Rebecca Orha, Holly Mole, Meg Dinesh-Kumar, Steven P. Lee, Frances K. Turrell, Clare M. Isacke

### Correspondence

frances.turrell@manchester.ac.uk, clare.isacke@icr.ac.uk

### In brief

Endosialin-directed CAR-T cells target perivascular cells within the tumor stroma impairing disease progression in multiple syngeneic solid tumor models.